



# ROCKLIN ROAD SIERRA COLLEGE CORRIDOR MULTIMODAL ENHANCEMENTS

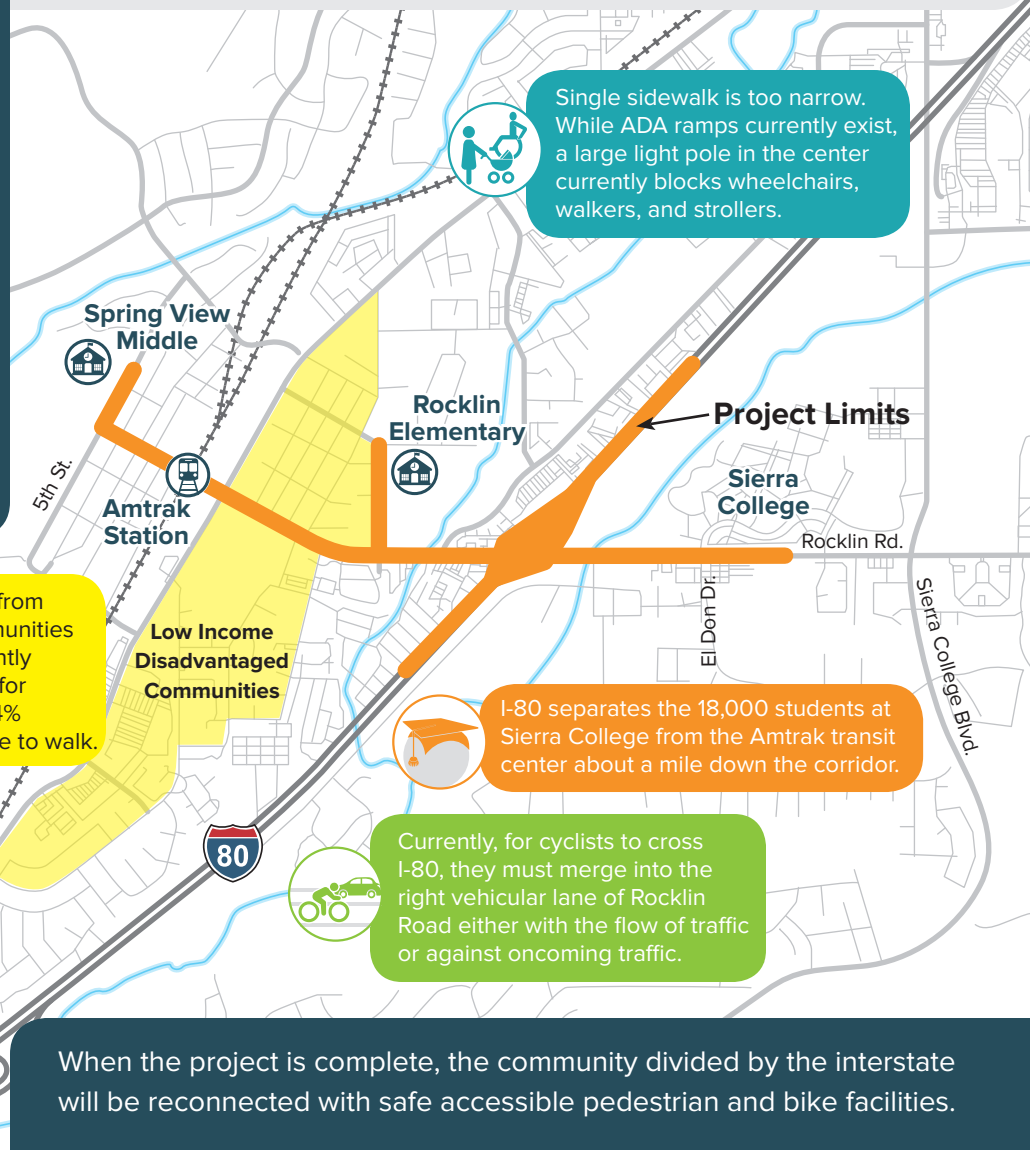


Interstate 80 divides the residential communities surrounding Rocklin Road from restaurants, parks, workplaces, schools, neighboring communities, and other amenities. While Class II bike lanes exist in the area, there is a gap as Rocklin Road passes under I-80.

The project proposes a 0.45-mile separated Class I walking and biking path over I-80 and improvements to existing Class II lanes. The Class I walking and biking path will fill the current active transportation gap along Rocklin Road caused by I-80.



The project creates a safe pedestrian and cyclist path for residents and non-residents alike.



When the project is complete, the community divided by the interstate will be reconnected with safe accessible pedestrian and bike facilities.

## Project Benefits



**PROVIDE** a separated and protected Class I pedestrian and bicycle corridor for crossing the I-80 freeway



**ENHANCE** bike lanes connecting directly to Spring View Middle, Rocklin Elementary, Sierra College, and the Amtrak Placer County Transit Center



**REDUCE** greenhouse gases and improve air quality by increasing walking and biking



**RECONNECT** the disadvantaged communities to more grocery, medical, educational, and recreational facilities

## Funding



ATP Request . . . . \$12M

Local Match . . . . \$16M

LPP Request . . . . \$6M

**Total Cost . . . . . \$34M**



**Watch the  
Project Video**

[https://youtu.be/2VFYg\\_Yo8IA](https://youtu.be/2VFYg_Yo8IA)



## Schedule

**2022**

DEC 2022:  
Environmental  
(PAED)

**2023**

**2024**

SEPT 2024:  
Final Design (PS&E)  
Right of Way (ROW)

**2025**

DEC 2024:  
Construction  
Ready to List (RTL)

**2026**

DEC 2026:  
Construction  
(CON)

## Transportation Equity

The low-income disadvantaged community within the west limits of the project has provided consistent feedback in our outreach process. A safe way to cross the freeway will meet their need to be connected to grocery, medical, educational, and recreational facilities and reconnect a community divided by I-80.

## Greenhouse Gas Emissions

This project is prioritized because it will reduce greenhouse gas emissions. The transportation analysis report completed in 2022 estimates that VMT will be reduced by 365,000 trips per year.

## Community Benefits

There is no safe ped/bike crossing to connect the communities divided by I-80. This project connects Sierra College students and staff to the Amtrak Station, housing, and restaurants. It connects the DAC within the western project limits to grocery, medical, and recreational resources. It remedies an unsafe facility, and it is the top transportation improvement priority of the local community.