

Job Name SECRET RAVINE COMMERCIAL	Job Number	Work Hours
Prime Contractor WESTERN ENGINEERING	LOCATION SIERRA COLLEGE BLVD AT DOMINGUEZ RD, ROCKLIN CA	
Phone 916-652-3990	Sheet Number 1 OF 2	Date 10-28-2020
Prepared By TANNER FORD	530-672-0222	ROAD-TECH SAFETY SERVICES INC.

**TABLE 6C-1 RECOMMENDED  
ADVANCE WARNING SIGN SPACING:**

25MPH OR LESS	100'
25-40MPH	250'
MORE THAN 40MPH	350'

**TABLE 6F-101(CA)  
MAX CONE SPACING:**

TAPER	40'
TANGENT	80'
CONFLICT	20'



**WATER TIE IN**

AERIAL PHOTO TO SCALE

ROAD-TECH  
SAFETY SERVICES, INC.  
LICENSED C31  
#796857  
*Matthew Jeffrey*

SIERRA COLLEGE BLVD 50MPH  
REDUCED TO 40MPH FOR THE  
WORK ZONE

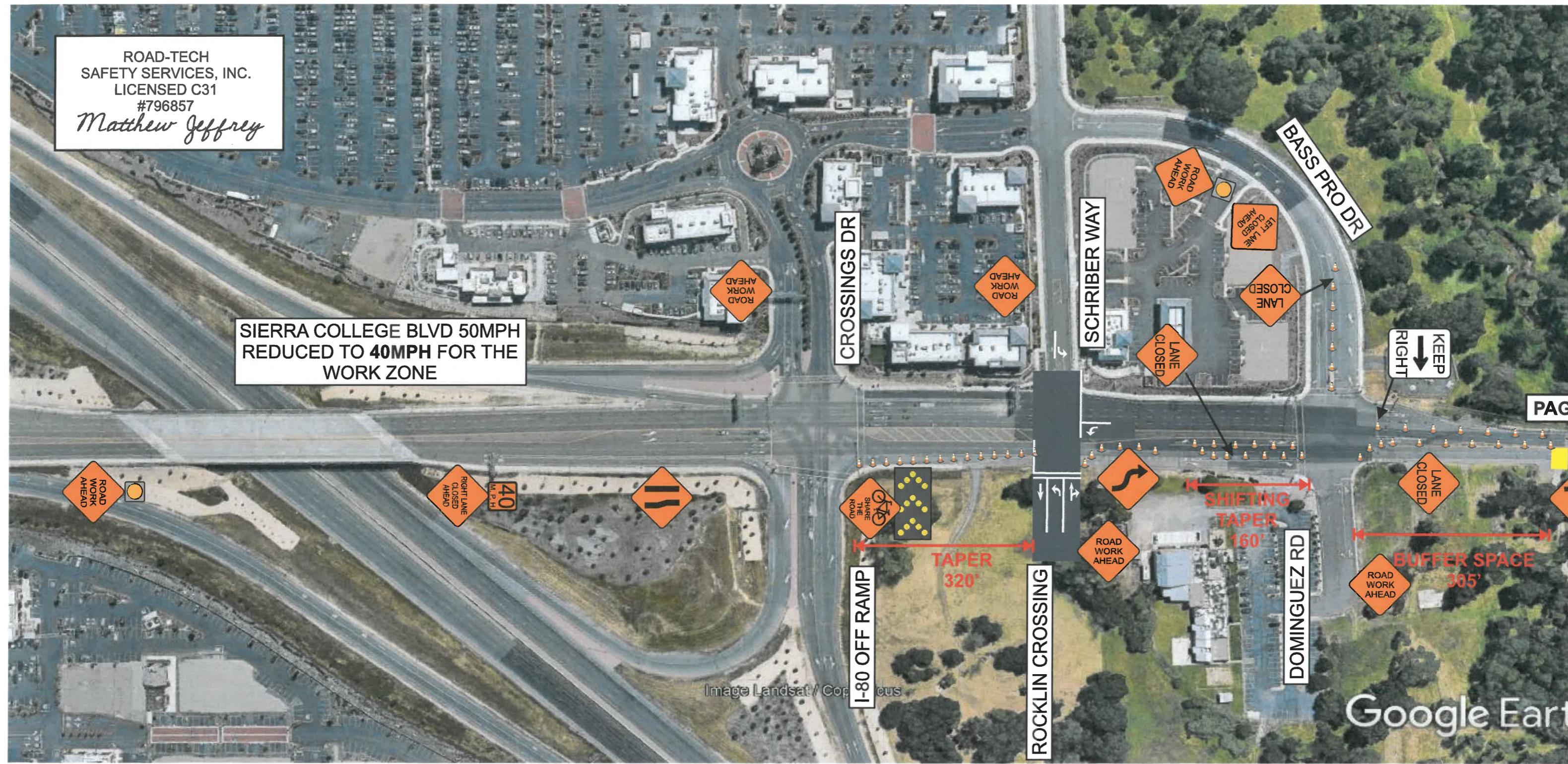


Image Landsat / Copernicus

Google Earth