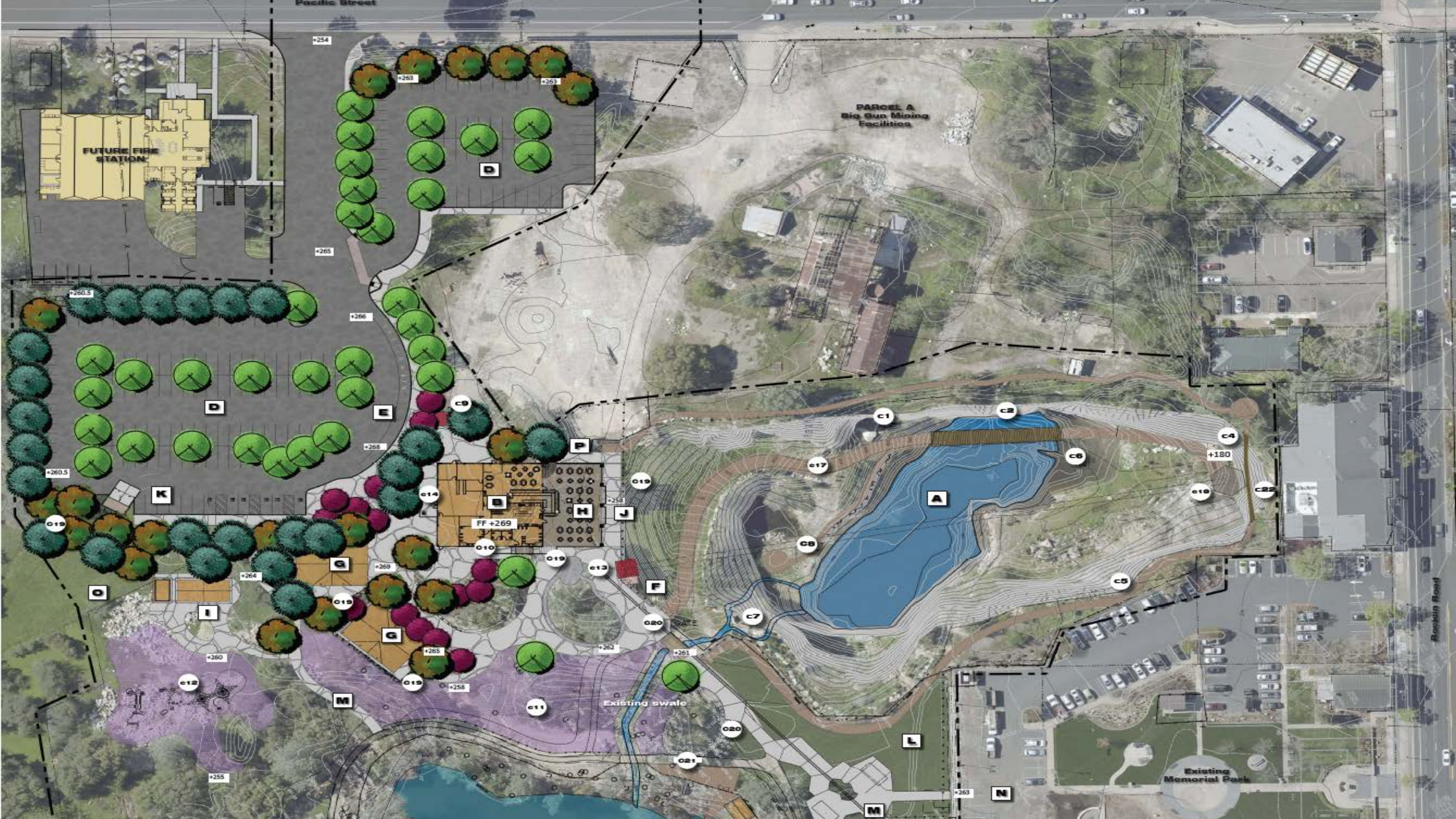




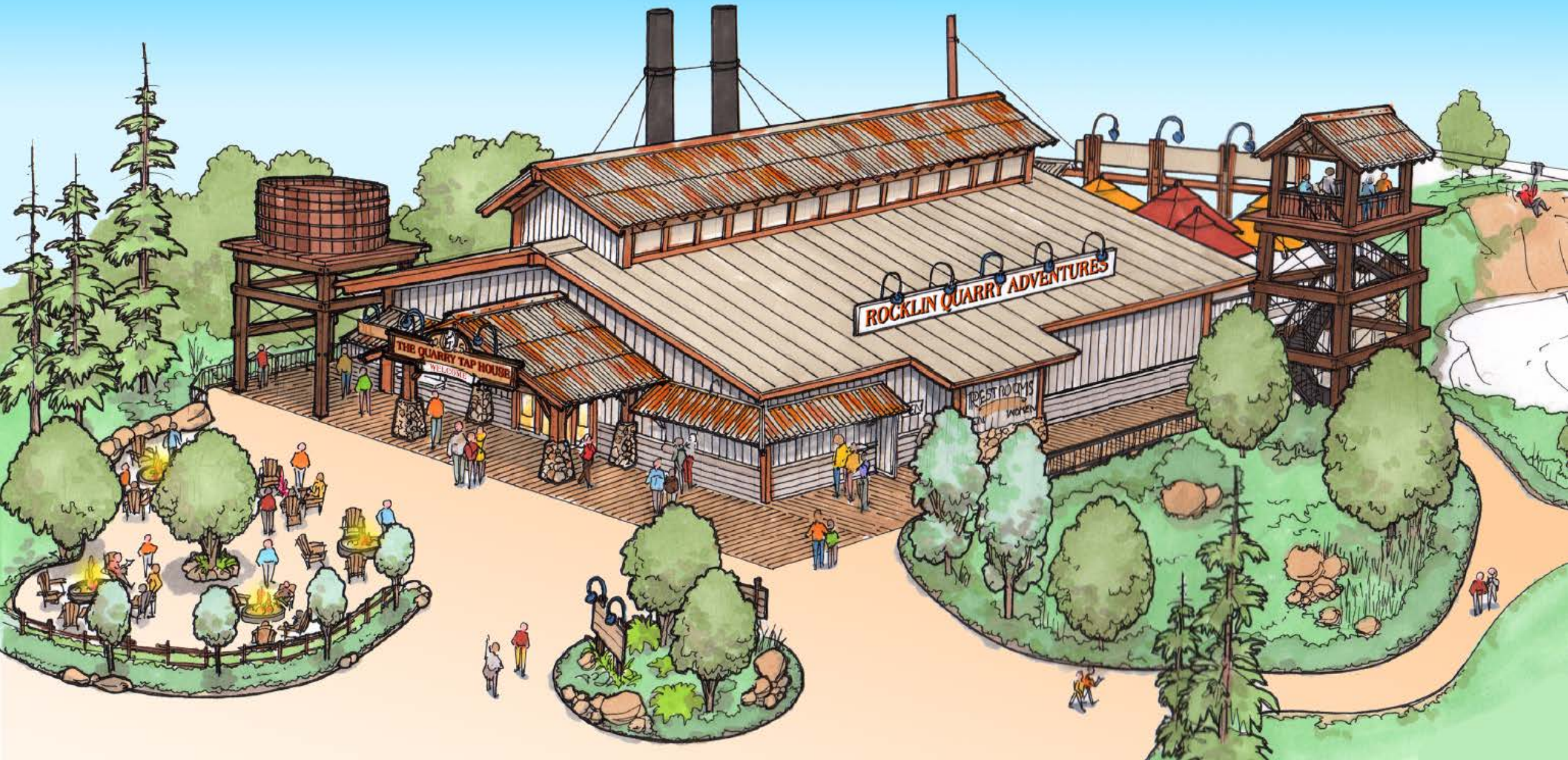
ROCKLIN QUARRY ADVENTURES





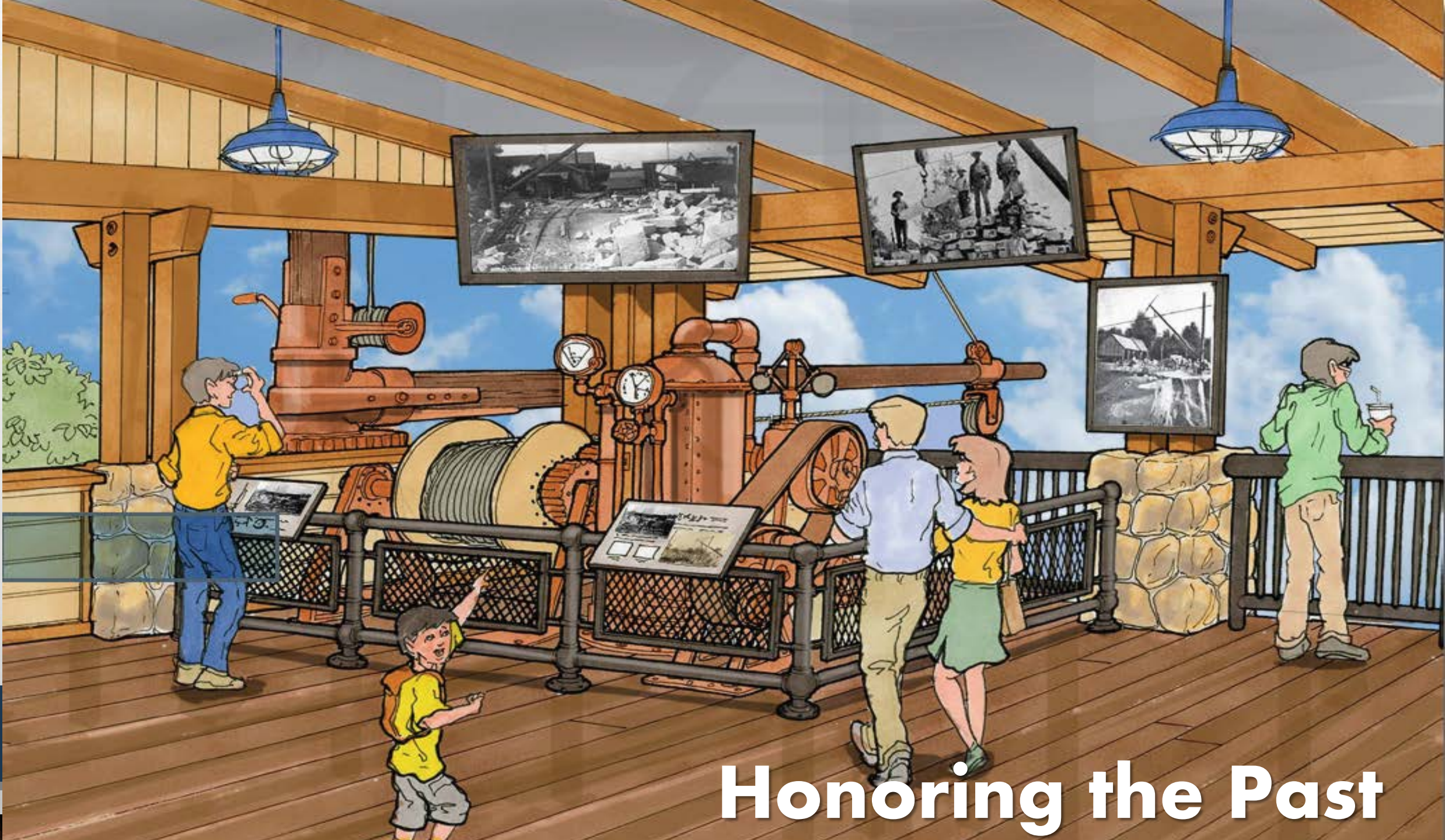


Grand Entrance



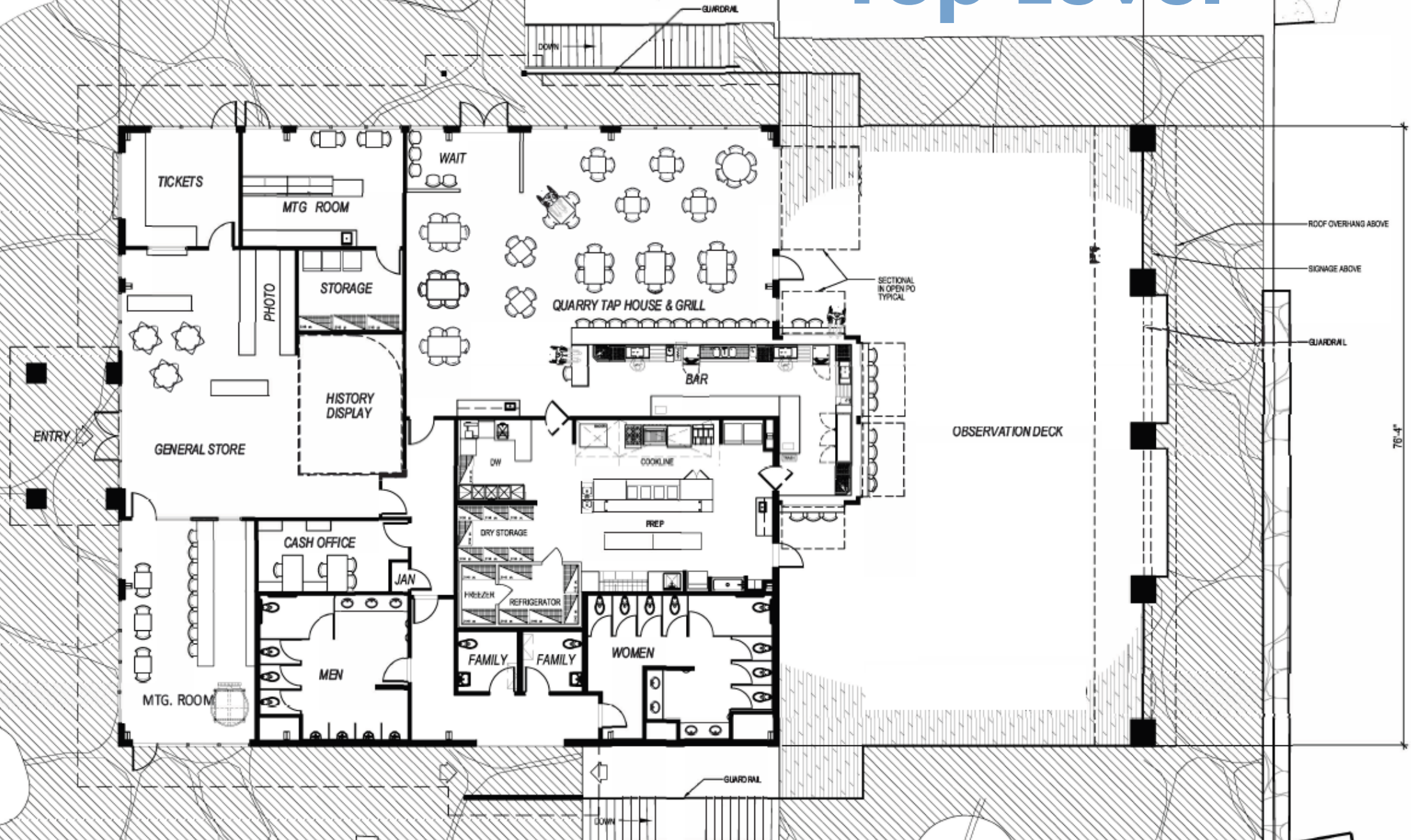
Observation Deck



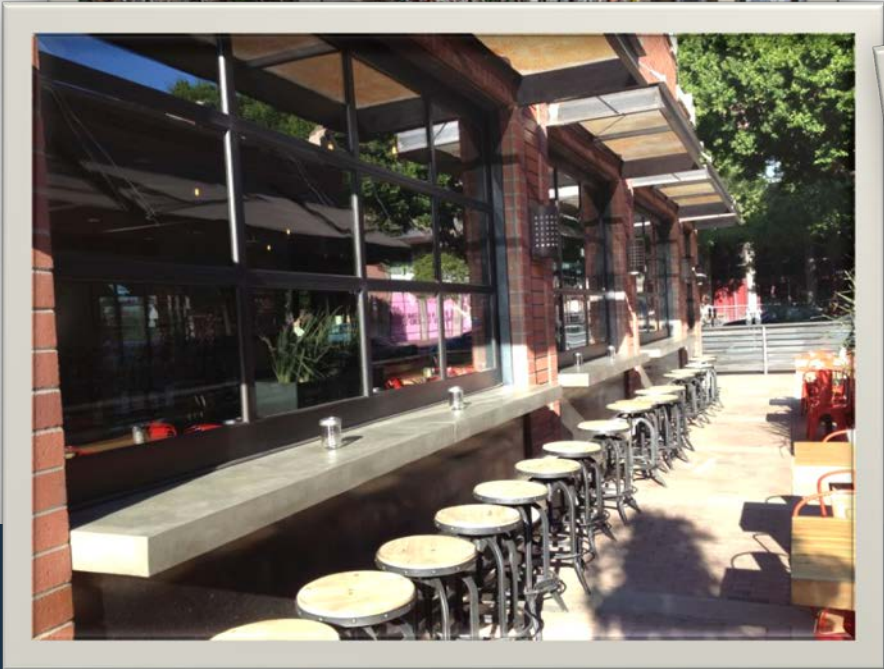


Honoring the Past

Top Level



Quarry Tap House



SMOKEHOUSE MEAT CHOICES

TURKEY BREAST • PULLED PORK • HAM
BURNT ENDS • HOT POLISH SAUSAGE
BRISKET • CHOPPED MEAT

SMOKEHOUSE SANDWICHES

BBQ SANDWICHES Reg \$4.99 • Large \$6.59
CHOPPED MEAT Regular \$4.59 • Large \$5.99
Add \$.50 for beef.

SMOKEHOUSE DINNERS

ONE MEAT AND ONE SIDE \$5.99
THREE RIBS AND ONE SIDE \$7.99
TWO MEATS AND TWO SIDES \$10.59
THREE MEATS AND TWO SIDES \$12.59
HALF-SLAB RIBS AND TWO SIDES \$12.59
THREE RIBS, ONE MEAT AND TWO SIDES \$13.59
HALF-CHICKEN AND TWO SIDES \$10.99



SMOKED CHICKEN WINGS

6 for \$5.99 • 12 for \$10.99 • 24 for \$20.99
Sauces: BBQ, Spicy BBQ, Ranch, Buffalo

SIDES

HOMEMADE FRIES Regular \$1.79 • Large \$2.39
CHILI CHEESE FRIES Regular \$3.99 • Large \$6.59
POTATO SALAD, BAKED BEANS, MACARONI SALAD
small \$1.99 • pint \$3.00 • quart \$6.00
COLESLAW, MAC & CHEESE, CHEESY POTATOES
small \$1.99 • pint \$5.00 • quart \$10.00
CHIPS \$1.49
HERMAN'S HOT PICKLES \$1.50

DRINKS & DESSERTS

SODA OR TEA 20 oz \$1.99 • 32 oz \$2.49
BOTTLED/CANNED BEER AVAILABLE
COBBLER OF THE DAY \$2.39
COBBLER A LA MODE \$3.39
Choices vary by day of week: Peach Butterscotch,
Cherry Cranberry, Apple Caramel



HOURS

Monday – Friday 10-10
Saturday 9-12
Sunday 11-10



FAMILY MEALS

FEEDS 6 TO 8 PEOPLE \$42.50
Two pounds of meat, two quarts of sides
FEEDS 10 TO 12 PEOPLE \$64.50
Three pounds of meat, three quarts of sides
FEEDS 14 TO 16 PEOPLE \$89.50
Three pounds of meat, one slab smoked ribs,
four quarts of sides
Substitute whole smoked chicken for one pound
of meat. All family meals include buns and BBQ
sauce. We can feed any size party. Ask for pricing!
COBBLER Full \$20.00 • Half \$12.00

BULK SMOKED MEATS

FULL-SLAB RIBS \$19.99 • HALF-SLAB RIBS \$10.99
BRISKET \$13.99/lb • PULLED PORK \$11.99/lb
HAM \$11.99/lb • TURKEY BREAST \$11.99/lb
WHOLE SMOKED CHICKEN \$9.99/each
HALF-SMOKED CHICKEN \$5.99/each
HOT POLISH SAUSAGE \$2.25/each
BURNT ENDS \$14.99/lb

SOUPS & CHILI

HOMEMADE CHILI served daily
SOUP CHOICES VARY BY DAY OF WEEK
Regular \$3.29 • Pint \$5.59 • Quart \$8.59
Chicken Noodle, Chicken Tortilla, Potato,
Ham and Bean, Gumbo, Chicken and Rice



SALADS

SIDE SALAD \$2.99
SMOKEHOUSE SALAD with choice of meat \$5.99
Add \$.50 for beef. Dressings include:
Italian, French, Blue Cheese, 1000 Island, Ranch

BAKED POTATOES

POTATO WITH BUTTER AND SOUR CREAM \$3.99
Add \$1.00 for bacon and cheese.
POTATO WITH CHILI AND CHEESE \$5.99
POTATO WITH SMOKED MEAT \$5.99
Add \$.50 for beef.



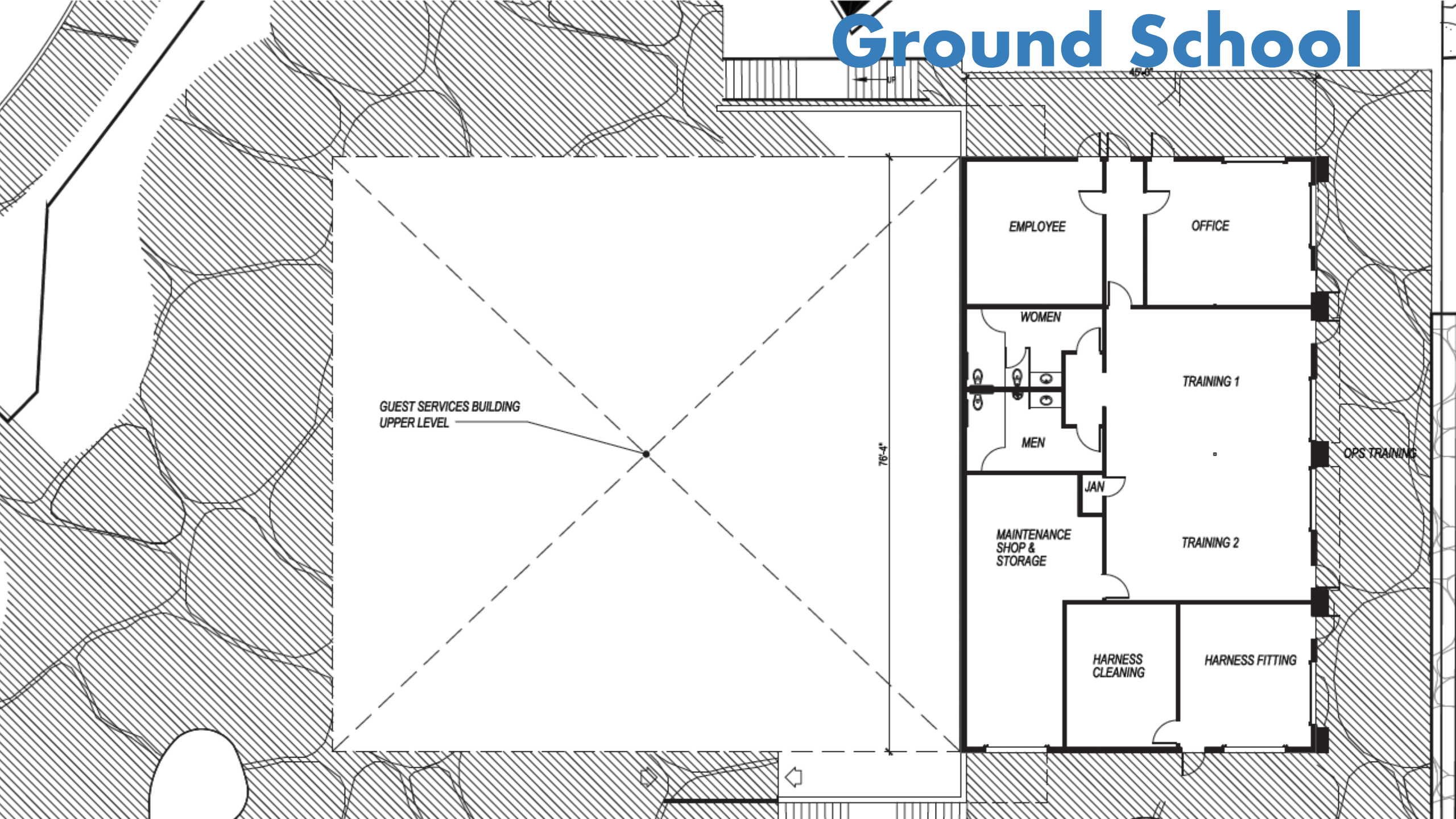
DELI SANDWICHES

DELI SANDWICH Regular \$4.49 • Large \$7.99
Extra Meat: regular add \$2.00, large add \$4.00
Extra Cheese: regular add \$.50, large add \$1.00
Meats: Ham, Turkey Breast, Roast Beef, Pastrami,
Bologna, Salami, Ham Salad, Chicken Salad,
Tuna Salad.
Cheeses: American, Swiss, Cheddar, Pepper Jack

KIDS MEALS

KIDS MEAL \$4.49 each
Small fries and small drink included.
Choice of: Hot Dog, Macaroni and Cheese,
Small Smoked Meat Sandwich, Peanut Butter and
Jelly Sandwich

Ground School



GUEST SERVICES BUILDING
UPPER LEVEL

EMPLOYEE

OFFICE

WOMEN

TRAINING 1

MEN

OPS TRAINING

JAN

MAINTENANCE
SHOP &
STORAGE

TRAINING 2

HARNESS
CLEANING

HARNESS FITTING

76'-4"

46'-0"

PARKING LOT MODIFICATIONS

ORIGINAL PARKING





A large, multi-story building with a grey roof and light-colored siding is situated on a rocky cliffside. The building has several windows and a central entrance. The cliff is composed of light-colored, layered rock. In the foreground, a dark blue banner with white text is overlaid. A dark grey star is positioned below the text. The background shows a clear blue sky and some green trees.

ROCKLIN QUARRY ADVENTURES

BRINGING FAMILIES CLOSER TOGETHER



A DAY AT KATHY LUND PARK



Rocklin Quarry Adventures Overview Plan for Attractions



INSIDE THE QUARRY WALLS.



AERIAL ADVENTURE PARK

The image shows a complex aerial adventure park course. It features numerous wooden platforms, beams, and ropes suspended from tall wooden poles. Several people are seen navigating the course, some standing on platforms and others in motion. The background consists of a rocky quarry wall under a clear blue sky. The overall scene is one of an outdoor recreational challenge.

- 100 ELEMENT MULTI-LEVEL AERIAL CHALLENGE COURSE
- 3 LEVELS OF DIFFICULTY: 75% SUPER EASY, 20% INTERMEDIATE AND 5% DIFFICULT
- 8-10 ZIP LINES WILL CONNECT ELEMENTS WITH EACH OTHER AND QUARRY FLOOR
- AERIAL COURSE WEAVES THROUGH THE QUARRY FLOOR, CONNECTING TO THE QUARRY WALLS AND SWINGING BRIDGES

GRAND ZIP LINE

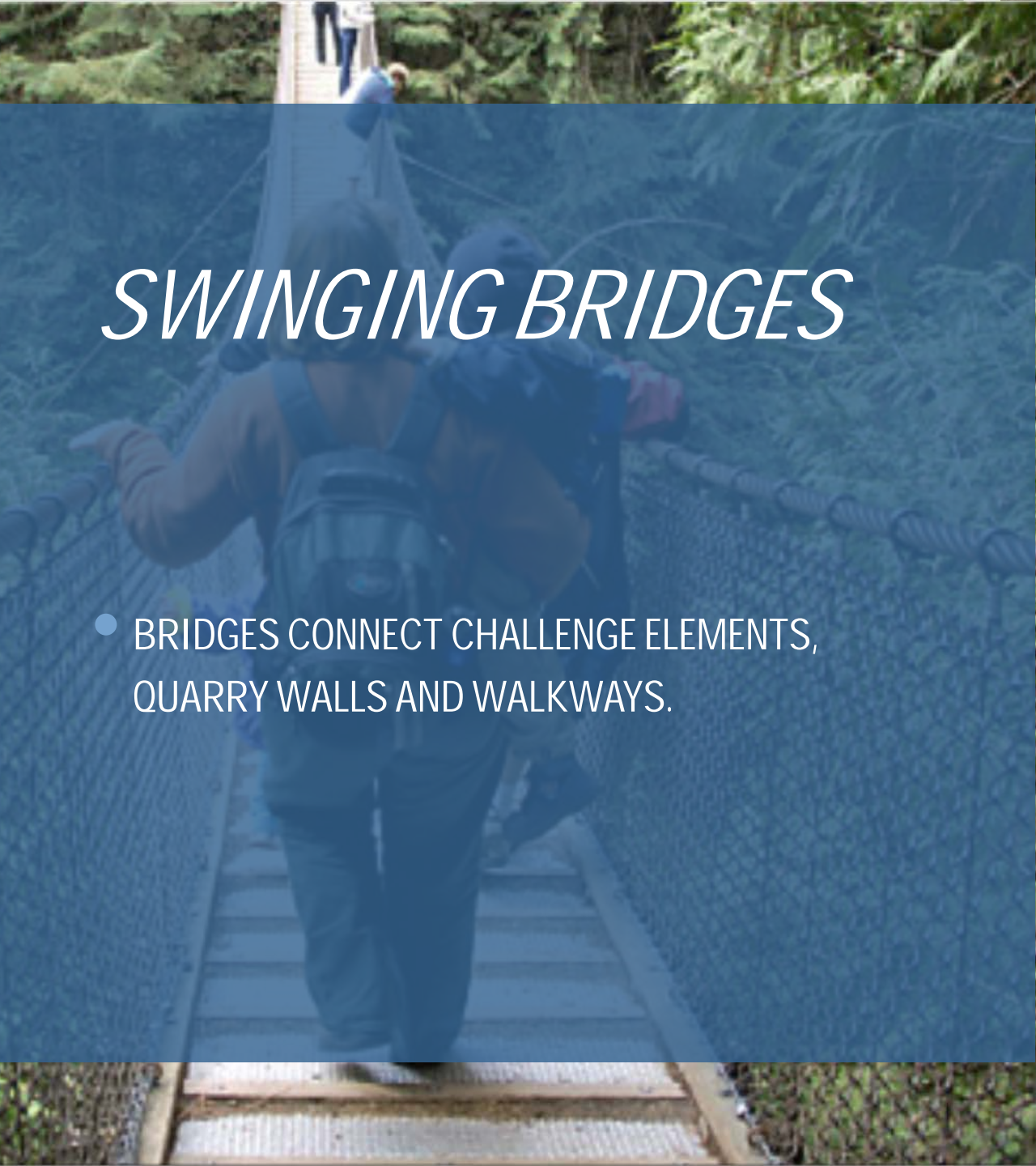
A photograph showing two people zip lining over a vast quarry landscape. The person in the foreground is wearing a red shirt and khaki shorts, while the person behind them is wearing a blue shirt and shorts. Both are wearing red helmets and are suspended from a cable. The background shows a wide expanse of a quarry with reddish-brown earth and green vegetation, under a blue sky with scattered white clouds.

- 700 FT LONG, DOUBLE OR TRIPLE ZIP LINES
- LOCATED OFF OF THE OBSERVATION DECK
- ZIP LINE WILL GO THE LENGTH OF THE QUARRY



SWINGING BRIDGES

- BRIDGES CONNECT CHALLENGE ELEMENTS, QUARRY WALLS AND WALKWAYS.





KING SWING

- PLACED ON THE SOUTH FLOOR OF THE QUARRY NEXT TO THE POND
- A DOUBLE OR TRIPLE SWING FOR A LARGER CAPACITY.

PERIMETER AND QUARRY WALLS



TRAVERSING HIGH TRAIL

- HIGH TRAVERSING TRAIL CONNECTS TO DIFFERENT PARTS OF THE AERIAL ADVENTURE COURSE ABOUT 400 FT LONG IN THREE SEGMENTS
- A 100 FT LONG LOW TRAVERSING TRAIL WILL BE SPECIALLY DESIGNED FOR JUNIOR EXPLORERS



WALL CARGO NET COMBO CLIMB AREA

- MULTIPLE CLIMBERS CAN BE ACCOMMODATED ON THE CARGO NET CLIMB ON CITY HALL WALL.



2 FREE FALL JUMPS STATIONS



JUMPS OFF A NATURAL OVERHANG, STRATEGICALLY PLACED OFF OF AERIAL PARK/ROPES COURSE PLATFORMS.

2 RAPPELLING STATIONS

- PLACED ON THE WEST WALL USING, AUTO-BELAY SYSTEMS





20 CLIMBING ROUTES

- 20 ROUTES WITH 10 AUTO BELAYS. EACH AUTO-BELAY SERVES 2 ROUTES.
- STRATEGICALLY PLACED ROCK CLIMBING ROUTES ACROSS THE MAIN WALL AND GULLY AREA. DIFFICULTY OF CLIMBING ROUTES SHOULD REFLECT THE DIFFICULTY PARAMETERS STATED ABOVE. CLIMBING HOLDS SHOULD BE DIFFERENT SIZES AND MADE OUT OF NATURAL GRANITE. THESE HOLDS WILL BE GLUED TO THE FACE OF THE CLIMBING WALL.

OUTSIDE THE QUARRY





AERIAL ADVENTURE COURSE HARNESS AND HELMET FREE

- **26 OR MORE HARNESS AND HELMET FREE ELEMENTS. IMAGINE WALKING ON A BALANCED BEAM 20 FEET HIGH WITH CARGO NET WALLS ON EITHER SIDE OF THE BEAM, SO IF YOU FALL THE NETS CATCH YOU.**



STREAM PLAY

- STREAM PLAY AREA WITH DAMS AND WATER DIVERTERS TO MOVE THE FLOW OF WATER.
- KIDS MOVE A SERIES OF DAMS AND GATES CHANGE THE FLOW OF WATER THAT IS ABOUT 2 TO 4 INCHES DEEP.



BOULDER CLIMB AREA

- BOULDERS ARRANGED INTO A MAZE. THESE BOULDERS SHOULD BE SELECTED FOR THEIR SHAPE AND HEIGHT FOR SAFE CLIMBING.
- THIS WAY WE ARE REPURPOSING EXISTING GRANITE BOULDERS IN THE AREA.



KIDS ZIPS

- FOUR OR MORE KID'S ZIPS, HARNESS AND HELMET FREE. THESE ZIPS TRAVERSE 20 TO 50 FEET AND ARE SUSPENDED JUST A FEW FEET OFF THE GROUND. ZIP LINES WILL HAVE A VARIETY OF SEATS OR HAND HOLDS.

QUINN LAKE ZONE





PADDLE BOATS/ BOAT HOUSE

- 20 OR MORE PADDLE BOATS WITH APPROPRIATE THEMING.
- BOAT HOUSE WITH KIOSK WINDOW FOR TICKETING AND LARGE ENOUGH TO STORE EQUIPMENT.
- LARGE DOCK WITH THE CAPACITY TO LOAD AT LEAST TWO BOATS AT A TIME.