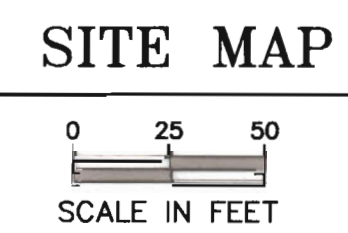
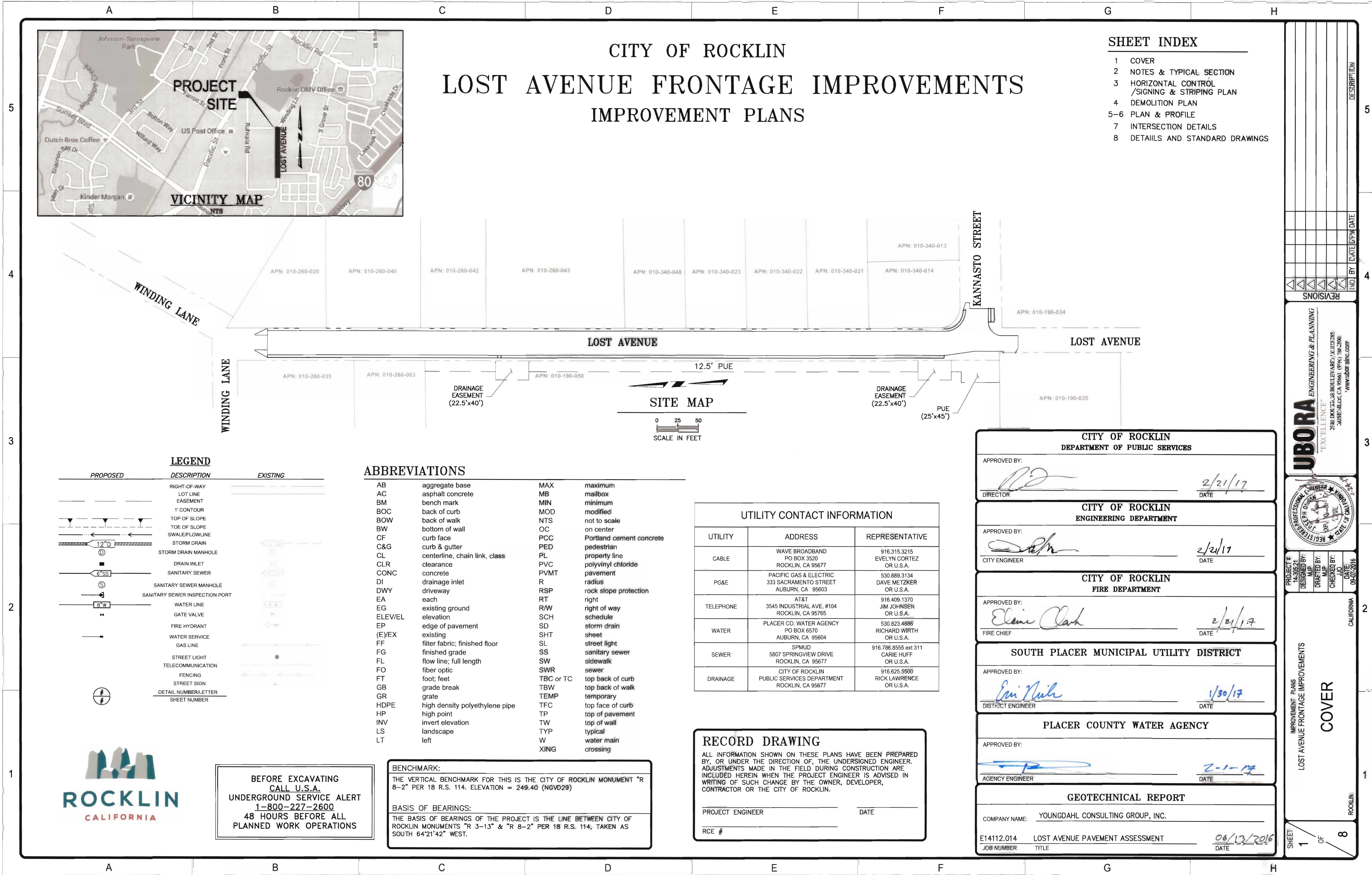


CITY OF ROCKLIN LOST AVENUE FRONTAGE IMPROVEMENTS IMPROVEMENT PLANS

SHEET INDEX

- 1 COVER
- 2 NOTES & TYPICAL SECTION
- 3 HORIZONTAL CONTROL /SIGNING & STRIPING PLAN
- 4 DEMOLITION PLAN
- 5-6 PLAN & PROFILE
- 7 INTERSECTION DETAILS
- 8 DETAILS AND STANDARD DRAWINGS



LEGEND

PROPOSED	DESCRIPTION	EXISTING
	RIGHT-OF-WAY	
	LOT LINE	
	EASEMENT	
	1' CONTOUR	
	TOP OF SLOPE	
	TOE OF SLOPE	
	SWALE/FLOWLINE	
	STORM DRAIN	
	STORM DRAIN MANHOLE	
	DRAIN INLET	
	SANITARY SEWER	
	SANITARY SEWER MANHOLE	
	SANITARY SEWER INSPECTION PORT	
	WATER LINE	
	GATE VALVE	
	FIRE HYDRANT	
	WATER SERVICE	
	GAS LINE	
	STREET LIGHT	
	TELECOMMUNICATION	
	FENCING	
	STREET SIGN	
	DETAIL NUMBER/LETTER	
	SHEET NUMBER	

ABBREVIATIONS

AB	aggregate base	MAX	maximum
AC	asphalt concrete	MB	mailbox
BM	bench mark	MIN	minimum
BOC	back of curb	MOD	modified
BOW	back of walk	NTS	not to scale
BW	bottom of wall	OC	on center
CF	curb face	PCC	Portland cement concrete
C&G	curb & gutter	PED	pedestrian
CL	centerline, chain link, class	PL	property line
CLR	clearance	PVC	polyvinyl chloride
CONC	concrete	PVMT	pavement
DI	drainage inlet	R	radius
DWY	driveway	RSP	rock slope protection
EA	each	RT	right
EG	existing ground	R/W	right of way
ELEV/EL	elevation	SCH	schedule
EP	edge of pavement	SD	storm drain
(E)VEX	existing	SHT	sheet
FF	filter fabric; finished floor	SL	street light
FG	finished grade	SS	sanitary sewer
FL	flow line; full length	SW	sidewalk
FO	fiber optic	SWR	sewer
FT	foot; feet	TBC or TC	top back of curb
GB	grade break	TBW	top back of walk
GR	grate	TEMP	temporary
HDPE	high density polyethylene pipe	TFC	top face of curb
HP	high point	TP	top of pavement
INV	invert elevation	TW	top of wall
LS	landscape	TYP	typical
LT	left	W	water main
		XING	crossing

UTILITY	ADDRESS	REPRESENTATIVE
CABLE	WAVE BROADBAND PO BOX 3520 ROCKLIN, CA 95677	916.315.3215 EVELYN CORTEZ OR U.S.A.
PG&E	PACIFIC GAS & ELECTRIC 333 SACRAMENTO STREET AUBURN, CA 95603	530.889.3134 DAVE METZKER OR U.S.A.
TELEPHONE	AT&T 3545 INDUSTRIAL AVE, #104 ROCKLIN, CA 95765	916.408.1370 JIM JOHNSEN OR U.S.A.
WATER	PLACER CO. WATER AGENCY PO BOX 6570 AUBURN, CA 95604	530.823.4886 RICHARD WIRTH OR U.S.A.
SEWER	SPMUD 5807 SPRINGVIEW DRIVE ROCKLIN, CA 95677	916.786.8555 ext 311 CARIE HUFF OR U.S.A.
DRAINAGE	CITY OF ROCKLIN PUBLIC SERVICES DEPARTMENT ROCKLIN, CA 95677	916.625.5500 RICK LAWRENCE OR U.S.A.

RECORD DRAWING

ALL INFORMATION SHOWN ON THESE PLANS HAVE BEEN PREPARED BY, OR UNDER THE DIRECTION OF, THE UNDERSIGNED ENGINEER. ADJUSTMENTS MADE IN THE FIELD DURING CONSTRUCTION ARE INCLUDED HEREIN WHEN THE PROJECT ENGINEER IS ADVISED IN WRITING OF SUCH CHANGE BY THE OWNER, DEVELOPER, CONTRACTOR OR THE CITY OF ROCKLIN.

PROJECT ENGINEER _____ DATE _____

RCE # _____

CITY OF ROCKLIN
DEPARTMENT OF PUBLIC SERVICES

APPROVED BY: _____ DATE: 2/21/17
DIRECTOR

CITY OF ROCKLIN
ENGINEERING DEPARTMENT

APPROVED BY: _____ DATE: 2/21/17
CITY ENGINEER

CITY OF ROCKLIN
FIRE DEPARTMENT

APPROVED BY: _____ DATE: 2/21/17
FIRE CHIEF

SOUTH PLACER MUNICIPAL UTILITY DISTRICT

APPROVED BY: _____ DATE: 1/30/17
DISTRICT ENGINEER

PLACER COUNTY WATER AGENCY

APPROVED BY: _____ DATE: 2-1-17
AGENCY ENGINEER

GEOTECHNICAL REPORT

COMPANY NAME: YOUNGDAHL CONSULTING GROUP, INC.

E14112.014 LOST AVENUE PAVEMENT ASSESSMENT DATE: 06/13/2016
JOB NUMBER TITLE



**BEFORE EXCAVATING
CALL U.S.A.
UNDERGROUND SERVICE ALERT
1-800-227-2600
48 HOURS BEFORE ALL
PLANNED WORK OPERATIONS**

BENCHMARK:
THE VERTICAL BENCHMARK FOR THIS IS THE CITY OF ROCKLIN MONUMENT "R 8-2" PER 18 R.S. 114. ELEVATION = 249.40 (NGVD29)

BASIS OF BEARINGS:
THE BASIS OF BEARINGS OF THE PROJECT IS THE LINE BETWEEN CITY OF ROCKLIN MONUMENTS "R 3-13" & "R 8-2" PER 18 R.S. 114, TAKEN AS SOUTH 64°21'42" WEST.

REVISIONS
 NO. BY DATE/CPM DATE
 URBORA ENGINEERING & PLANNING
 "EXCELLENCE"
 2501 DOW CT., 38 BOULEVARD, SUITE 208
 JOSEPHVILLE, CA 95661 (916) 786-2900
 www.urbora-inc.com
 PROJECT # 14-30521
 DESIGNED BY: [Signature]
 DRAWN BY: [Signature]
 CHECKED BY: [Signature]
 DATE: 09-07-2016
 CALIFORNIA
 IMPROVEMENT PLANS
 LOST AVENUE FRONTAGE IMPROVEMENTS
 COVER
 SHEET 1 OF 8
 ROCKLIN

CITY OF ROCKLIN STANDARD NOTES

PROJECT NOTES

1. THE CONTRACTOR SHALL NOT BEGIN ANY WORK SHOWN ON THESE PLANS UNTIL THE CITY ENGINEER'S SIGNATURE OF APPROVAL IS AFFIXED HEREON AND ALL APPLICABLE PERMITS HAVE BEEN OBTAINED.
2. CONTRACTOR SHALL ASSUME SOLE AND COMPLETE RESPONSIBILITY FOR CONSTRUCTION OF THIS PROJECT, INCLUDING SAFETY OF ALL PERSONS AND PROPERTY. THIS REQUIREMENT SHALL APPLY CONTINUOUSLY AND NOT BE LIMITED TO NORMAL WORKING HOURS. THE CONTRACTOR SHALL DEFEND, INDEMNIFY AND HOLD THE CITY AND THE ENGINEER HARMLESS FROM ANY AND ALL LIABILITY, REAL OR ALLEGED IN CONNECTION WITH THE PERFORMANCE OF WORK ON THIS PROJECT, EXCEPTING FOR LIABILITY ARISING FROM THE SOLE NEGLIGENCE OF THE CITY OR ENGINEER.
3. THE CONTRACTOR IS HEREBY NOTIFIED THAT PRIOR TO COMMENCING CONSTRUCTION, HE SHALL CONTACT ALL UTILITY COMPANIES FOR VERIFICATION THAT THE CONSTRUCTION SITE OF THE LOCATIONS OF ALL UNDERGROUND FACILITIES WHERE SUCH FACILITIES MAY CONFLICT WITH THE PLACEMENT OF IMPROVEMENTS SHOWN ON THIS PLAN. CALL "UNDERGROUND SERVICE ALERT" AT (800) 227-2600 PRIOR TO ANY EXCAVATION.
4. THE LOCATIONS OF ALL UNDERGROUND FACILITIES SHOWN ON THIS PLAN ARE APPROXIMATE. A REASONABLE EFFORT HAS BEEN MADE TO LOCATE AND DELINEATE ALL UNDERGROUND FACILITIES; HOWEVER, THE ENGINEER ASSUMES NO LIABILITY FOR THE ACCURACY OR COMPLETENESS OF THE EXISTING FACILITIES SHOWN HEREON OR FOR THE EXISTENCE OF OTHER UNDERGROUND UTILITIES OR OBJECTS WHICH THE CONTRACTOR MAY DISCOVER, BUT ARE NOT SHOWN ON THESE PLANS. THE CONTRACTOR SHALL VERIFY THE LOCATION OF ALL EXISTING FACILITIES AND IMMEDIATELY NOTIFY THE ENGINEER IF ANY SUCH FACILITIES INTERFERE WITH THE CONSTRUCTION OF IMPROVEMENTS. THE CONTRACTOR SHALL STOP WORK UNTIL MITIGATIONS CAN BE MADE. ANY COSTS INCURRED RESULTING FROM THE CONTRACTOR'S FAILURE TO STOP WORK AS DIRECTED SHALL BE THE RESPONSIBILITY OF THE CONTRACTOR.
5. ALL MATERIALS, METHODS, AND WORKMANSHIP SHALL CONFORM TO THE SPECIFICATIONS OF THE AGENCIES INVOLVED AND ALL WORK IS SUBJECT TO THE APPROVAL OF THEIR DIRECTOR OR AUTHORIZED REPRESENTATIVE.
6. THE CONTRACTOR SHALL NOTIFY THE CITY OF ROCKLIN'S ENGINEERING DIVISION INSPECTORS MON - FRI 8:00 AM TO 4:00 PM AT (916) 625-5111 FOR A PRE-CONSTRUCTION MEETING 48 HOURS IN ADVANCE OF STARTING ANY CONSTRUCTION ACTIVITIES. PLACER COUNTY WATER AGENCY AND SOUTH PLACER MUNICIPAL UTILITY DISTRICT REQUIRE AT LEAST 48 HOURS PRIOR TO ANY CONSTRUCTION REQUESTS FOR INSPECTION OF PUBLIC FACILITIES. THEREFORE NOTICE SHALL BE GIVEN 48 HOURS IN ADVANCE AND BE PERFORMED BY THE AGENCY'S DESIGNATED AGENT.
7. THE CONTRACTOR SHALL OBTAIN ALL NECESSARY ENCROACHMENT PERMITS AND SHALL POSSESS APPROVED PLANS PRIOR TO BEGINNING OF CONSTRUCTION. A SET OF SIGNED AND APPROVED PLANS ARE TO BE ON THE JOB SITE AT ALL TIMES.
8. THE CONTRACTOR SHALL MAINTAIN THE EXISTING PUBLIC AND PRIVATE IMPROVEMENTS WITHIN THE WORK AREA AND SHALL ADEQUATELY BARRICADE THE PROJECT SITE TO KEEP THE GENERAL PUBLIC FROM THE SITE. ANY IMPROVEMENTS DAMAGED DURING CONSTRUCTION SHALL BE REPLACED BY THE CONTRACTOR.
9. THE CONTRACTOR MUST EXPOSE THE END OF EXISTING GRAVITY LINES FOR THE SURVEYOR TO VERIFY LOCATION AND DEPTH OF FACILITIES PRIOR TO CONNECTION OF PROPOSED UTILITY. THE CONTRACTOR SHALL INCUR ALL COSTS FOR SUCH EXCAVATION.
10. THE CONTRACTOR SHALL AT ALL TIMES COORDINATE HIS WORK WITH THAT OF OTHERS ON THE SITE. THE CONTRACTOR SHALL HAVE A RESPONSIBLE PARTY, WHO SHALL HAVE THE AUTHORITY TO REPRESENT AND ACT FOR THE CONTRACTOR ON THE JOB SITE DURING ALL WORKING HOURS.

EARTHWORK AND GRADING

1. THE CONTRACTOR SHALL CONTACT THE CITY OF ROCKLIN ENGINEERING DIVISION 48 HOURS PRIOR TO THE START OF EARTHWORK AND GRADING CONSTRUCTION.
2. ALL EARTHWORK SHALL BE PERFORMED IN ACCORDANCE WITH CHAPTER 18 OF THE CALIFORNIA BUILDING CODE.
3. ALL COMPACTION TESTING SHALL BE PERFORMED BY THE CITY'S DESIGNATED AGENT AND BE PAID FOR BY THE CITY (OR CONTRACTOR IN CASE OF RETESTING).
4. ALL UNSUITABLE AND SURPLUS MATERIAL SHALL BECOME THE PROPERTY OF THE CONTRACTOR AND SHALL BE REMOVED FROM THE SITE UNLESS THE ENGINEER SPECIFIES OTHERWISE.
5. THE CONTRACTOR SHALL AT ALL TIMES CONFORM TO THE RECOMMENDATIONS FROM THE CITY OF ROCKLIN ON DUST CONTROL. AREAS SURROUNDING THE WORK SHALL BE KEPT CLEAN AND RETURNED TO ORIGINAL CONDITION UPON COMPLETION OF CONTRACT. GRADING SHALL NOT OCCUR WHEN WIND SPEED EXCEEDS 10 MPH CONTINUOUSLY FOR MORE THAN 1 HOUR.
6. CONTRACTOR SHALL APPLY EROSION CONTROL HYDROSEEDING TO ALL GRADED OR DISTURBED SOILS WITHIN THE WORK AREA AFTER COMPLETION OF IMPROVEMENTS OR AS SOON AS PRACTICAL AFTER GRADING TO REDUCE DUST AND EROSION POTENTIAL. STRAW OR HYDROMULCHING SHALL BE COMBINED WITH THE SEEDING ON SLOPES EQUAL TO OR GREATER THAN 10:1 AND PLACED PRIOR TO COMPLETION OF PROJECT IF DEEMED NECESSARY FOR CONTROLLING SOIL EROSION.
7. THE CONTRACTOR SHALL DO THE FOLLOWING IF GRADING AND CLEARING IMPROVEMENTS ARE INCOMPLETE BY OCTOBER 15TH.
 - INSTALL EROSION PROTECTION ON SLOPES 10:1 OR STEEPER AND SWALES WITH SLOPES 2% OR GREATER.
 - PREVENT SEDIMENT FROM LEAVING THE PROJECT AREA.
 - GRADE CUTTER SAG POINTS TO DRAIN. PROVIDE FOR DRAINAGE FROM ENDS OF IMPROVEMENTS.
 - PREVENT SEDIMENTATION IN EXISTING STORM DRAIN SYSTEM AND CLEAN PIPES AS PER SPECIFICATION SECTION S62.
 - SEAL OFF ALL SANITARY SEWER CONNECTIONS TO EXISTING SYSTEMS.

THE CONTRACTOR SHALL MAINTAIN WINTERIZATION FACILITIES AT ALL TIMES UNTIL THE CITY ACCEPTS THE SUBDIVISION IMPROVEMENTS.

8. THOSE ENGAGED IN CONSTRUCTION ACTIVITY SHALL COMPLY WITH THE CITY OF ROCKLIN CONSTRUCTION NOISE COMPATIBILITY GUIDELINES, INCLUDING RESTRICTING CONSTRUCTION NOISE GENERATING ACTIVITIES WITHIN OR NEAR RESIDENTIAL AREAS TO BETWEEN 7:00 A.M. AND 7:00 P.M. ON WEEKDAYS AND 8:00 A.M. AND 7:00 P.M. WEEKENDS TO THE SATISFACTION OF THE PUBLIC WORKS DIRECTOR OR BUILDING OFFICIAL.

STREETS

1. PLACEMENT OF PROPOSED PUBLIC IMPROVEMENTS AND PROPOSED ONSITE IMPROVEMENTS SHALL NOT BE LIMITED TO THESE PLANS, BUT BE BUILT IN ACCORDANCE WITH THE CITY OF ROCKLIN IMPROVEMENT STANDARDS AND TO THE SATISFACTION OF THE CITY ENGINEER.
2. THE CONTRACTOR SHALL COORDINATE WITH ALL OTHER WORK TO ASSURE THAT ALL UNDERGROUND CONDUITS AND UTILITIES ARE INSTALLED PRIOR TO PAVING. ALL PIPE IN PAVED AREAS SHALL BE PLACED PRIOR TO PLACING AGGREGATE BASE. NO CURB, GUTTER, SIDEWALK OR AGGREGATE BASE SHALL BE PLACED UNTIL ALL UNDERGROUND UTILITIES ARE INSTALLED.
3. EXISTING A.C. SURFACE SHALL BE CUT TO A NEAT STRAIGHT LINE PARALLEL WITH THE STREET CENTERLINE AND THE EXPOSED EDGE AND VERTICAL EDGE OF GUTTER LIP SHALL BE TACKED WITH EMULSION PRIOR TO PAVING. THE CONTRACTOR SHALL PREVENT SAW CUT MATERIAL FROM ENTERING DRAINAGE STRUCTURES, WATERWAYS, DRAINAGE SWALES, ETC. THE EXPOSED BASE MATERIAL SHALL BE GRADED, RECOMPACTED, AND RESEALED PRIOR TO PAVING. ANY CONCRETE, A.C., TREES, FENCES, AND/OR OTHER OBSTRUCTIONS REQUIRED TO CONSTRUCT THE IMPROVEMENTS SHALL BE REMOVED PRIOR TO PAVING.
4. TRAFFIC CONTROL PROCEDURES SHALL CONFORM TO THE MOST RECENT EDITION OF THE CALIFORNIA MANUAL ON UNIFORM TRAFFIC CONTROL DEVICES. THE CONTRACTOR SHALL OBTAIN APPROVAL FROM THE CITY OF ROCKLIN FOR THE METHOD OF TRAFFIC CONTROL PRIOR TO STARTING CONSTRUCTION.
5. THE CONTRACTOR WILL BE RESPONSIBLE FOR ANY DAMAGE TO THE STREETS OR SIDEWALKS DURING THE CONSTRUCTION PHASE. IF THE CITY FINDS A SIGNIFICANT AMOUNT OF STREET DAMAGE, AN OVERLAY OF THE ENTIRE PROJECT OR STREET IN QUESTION WILL BE REQUESTED AND PLACED BEFORE A NOTICE OF COMPLETION IS PROCESSED. THE CONTRACTOR WILL BE TOTALLY RESPONSIBLE FOR THE QUALITY OF WORKMANSHIP ON THE PROJECT.

UTILITY	PROVIDER	TELEPHONE
SEWER	SO, PLACER MUNICIPAL UTILITY DISTRICT (CARIE HUFF)	916.786.8555 ext. 311
WATER	PLACER COUNTY WATER AGENCY (RICHARD WIRTH)	530.823.4886
STORM DRAIN, TELECOMMUNICATIONS, CONDUIT, STREET LIGHT & TRAFFIC SIGNAL	CITY OF ROCKLIN PUBLIC SERVICES DEPARTMENT (RICK LAWRENCE)	916.625.5500
ELECTRIC & NATURAL GAS	PACIFIC GAS & ELECTRIC (DAVID METZKER)	530.889.3134
TELEPHONE	AT&T (JIM JOHNSON)	916.409.1370
CABLE TV	WAVE (EVELYN CORTEZ)	916.315.3215

7. ALL OF THE ABOVE UTILITIES ARE MEMBERS OF THE UNDERGROUND SERVICE ALERT (U.S.A.) ONE-CALL PROGRAM. THE CONTRACTOR OR ANY SUBCONTRACTOR FOR THIS PROJECT WILL BE REQUIRED TO NOTIFY MEMBERS OF (U.S.A.) 48 HOURS IN ADVANCE OF PERFORMING EXCAVATION WORK BY CALLING THE TOLL-FREE NUMBER (800) 227-2600. EXCAVATION, FOR THE PURPOSE OF THIS REQUIREMENT, IS DEFINED AS BEING 18" OR MORE IN DEPTH BELOW THE EXISTING SURFACE.

STORM DRAINS

- A. STORM DRAIN REQUIREMENTS SHALL BE PER THE CITY OF ROCKLIN STANDARD SPECIFICATIONS AND INSTALLED PER MANUFACTURER'S RECOMMENDATIONS. MINIMUM OF 12" DIAMETER PIPE WITHIN CITY RIGHT OF WAY AND MINIMUM 8" DIAMETER PIPE ON PRIVATE PROPERTY.
- B. PIPE ALTERNATIVES SHALL BE:
 - CONCRETE PIPE
 - ASTM-C14 CLASS 3 FOR SIZES 10 AND SMALLER
 - ASTM-C76 CLASS 3 (UNLESS OTHERWISE SHOWN ON PLANS)
 - HELICAL STEEL PIPE
 - 1-1/2" X 1/2" CORRUGATION - 16 GA. SIZES 6" TO 10"
 - 2-3/4" X 1/2" CORRUGATION - 16 GA. SIZES 12" TO 48"
 - 3" X 1" CORRUGATION - 16 GA. SIZES 54" AND LARGER
 - HDPE (PER CALTRANS STANDARD, SECTION 64, MOST RECENT EDITION)
 - SPIRAL RIB STEEL PIPE
 - 3/4" X 1" RIBS AT 7-1/2" PITCH - 16 GA. SIZES 18" TO 54"
 - 14 GA. SIZES 60" AND 66"
 - 12 GA. SIZES 72" AND LARGER
- IF A PIPE ALTERNATIVE IS TO BE USED IN PLACE OF WHAT IS CALLED OUT ON THIS SET OF IMPROVEMENT PLANS THE REVISION MUST BE PROCESSED THROUGH THE PROJECT ENGINEER AND APPROVED BY THE CITY OF ROCKLIN.
- C. THE CONTRACTOR SHALL MAINTAIN ALL EXISTING DRAINAGE FACILITIES WITHIN THE CONSTRUCTION AREA UNTIL NEW DRAINAGE IMPROVEMENTS ARE IN PLACE AND FUNCTIONING.
- D. EXISTING STORM DRAIN FACILITIES SHALL BE EXPOSED AND INVERT VERIFIED PRIOR TO PLACEMENT OF PIPE. ALL CONSTRUCTION SHALL CONFORM TO MANUFACTURER'S SPECIFICATIONS AND TO REQUIREMENTS OF THE CITY OF ROCKLIN STANDARD SPECIFICATIONS.
- E. CONFINED SPACE ENTRY (STORM DRAIN MANHOLES): IT IS THE PROJECT OWNER / DEVELOPER'S RESPONSIBILITY AS HOST EMPLOYER TO HAVE A CONFINED SPACE ENTRY PROGRAM IN COMPLIANCE WITH THE REQUIREMENTS OF SECTIONS 5156-5159 OF TITLE 8, GENERAL INDUSTRIAL SAFETY ORDERS, CALIFORNIA CODE OF REGULATIONS. CITY OF ROCKLIN EXISTING MANHOLES ARE "PERMIT REQUIRED" CONFINED SPACES. THE HOST EMPLOYER'S CONTRACTOR MUST STRICTLY CONFORM TO CITY OF ROCKLIN PERMIT REQUIRED CONFINED SPACE ENTRY PROGRAM IN ENTERING ANY CITY OF ROCKLIN OWNED MANHOLE.
- F. "NO DUMPING - PUBLIC NOTICE REQUIREMENT" - A PUBLIC NOTICE SHALL BE PLACED ADJACENT TO ALL DRAIN INLETS IN ACCORDANCE WITH CITY STANDARD DRAWING 4-24.

STRIPING

ALL PAVEMENT MARKINGS SHALL BE THERMOPLASTIC AND ARE TO CONFORM TO THE MOST RECENT EDITION OF THE CALTRANS STANDARD SPECIFICATIONS AND PLANS.

CONSTRUCTION STAKING / MONUMENTATION

1. ALL FIELD STAKING SHALL BE DONE BY THE CONTRACTOR. NO WORK SHALL COMMENCE UNTIL STAKING IS PROVIDED.
2. THE CONTRACTOR IS RESPONSIBLE FOR THE PROTECTION OF ALL MONUMENTS AND OTHER SURVEY MARKERS.

ENGINEER'S NOTES

1. THE CONTRACTOR SHALL MAKE SITE INSPECTIONS PRIOR TO BIDDING TO DETERMINE ALL ITEMS NOT SHOWN AS BID ITEMS WHICH ARE NECESSARY TO PERFORM A COMPLETE AND ACCEPTABLE JOB. ALL SUCH ITEMS SHALL BE INCLUDED IN THE BID.
2. THE CONTRACTOR SHALL PROVIDE ONE COMPLETE ACCURATE SET OF RECORD CHANGES. THE CHANGES SHALL BE CLEARLY MARKED IN RED ON A CLEAN SET OF BOND DRAWINGS AND GIVEN TO THE ENGINEER AT JOB COMPLETION.
3. THE CITY MAY REQUIRE THE CONTRACTOR TO UNCOVER ANY IMPROVEMENTS THAT HAVE BEEN COMPLETED WITHOUT PROPER CITY INSPECTION AND/OR APPROVAL. IF THE INSTALLATION IS FOUND NOT TO MEET CITY STANDARDS OR PREVIOUSLY APPROVED ALTERNATIVES SHOWN ON THE PLANS, THE CONTRACTOR MAY BE REQUIRED TO REMOVE AND REPLACE SUCH IMPROVEMENTS AT HIS EXPENSE.
4. INSTALLATION AND MAINTENANCE OF EROSION CONTROL SHOWN ON THESE PLANS ARE INTENDED AS A GUIDE. ADDITIONAL EROSION CONTROL MEASURES MAY BE REQUIRED AS DETERMINED IN THE FIELD AND APPROVED BY THE ENGINEER. THIS RESPONSIBILITY SHALL APPLY THROUGHOUT THE COURSE OF CONSTRUCTION AND UNTIL ALL DISTURBED AREAS HAVE BECOME STABILIZED AND SHALL NOT BE LIMITED TO WET WEATHER PERIODS.
5. THE CONTRACTOR SHALL BE SOLELY AND COMPLETELY RESPONSIBLE FOR FURNISHING, INSTALLING, AND MAINTAINING ALL WARNING SIGNS AND DEVICES NECESSARY TO SAFEGUARD THE GENERAL PUBLIC AND THE WORK, AND PROVIDE FOR THE PROPER AND SAFE ROUTING OF ALL VEHICULAR AND PEDESTRIAN TRAFFIC DURING THE PERFORMANCE OF THE WORK. THIS REQUIREMENT SHALL APPLY CONTINUOUSLY AND NOT BE LIMITED TO THE NORMAL WORKING HOURS.
6. UNDISCOVERED ERRORS AND OMISSIONS SHALL BE CORRECTED BY OTHERS.
7. CONFLICTS WITH OTHER IMPROVEMENTS SHALL BE THE RESPONSIBILITY OF OTHERS.

SOUTH PLACER MUNICIPAL UTILITY DISTRICT NOTES

SEWER - SOUTH PLACER MUNICIPAL UTILITY DISTRICT (916) 786-8555

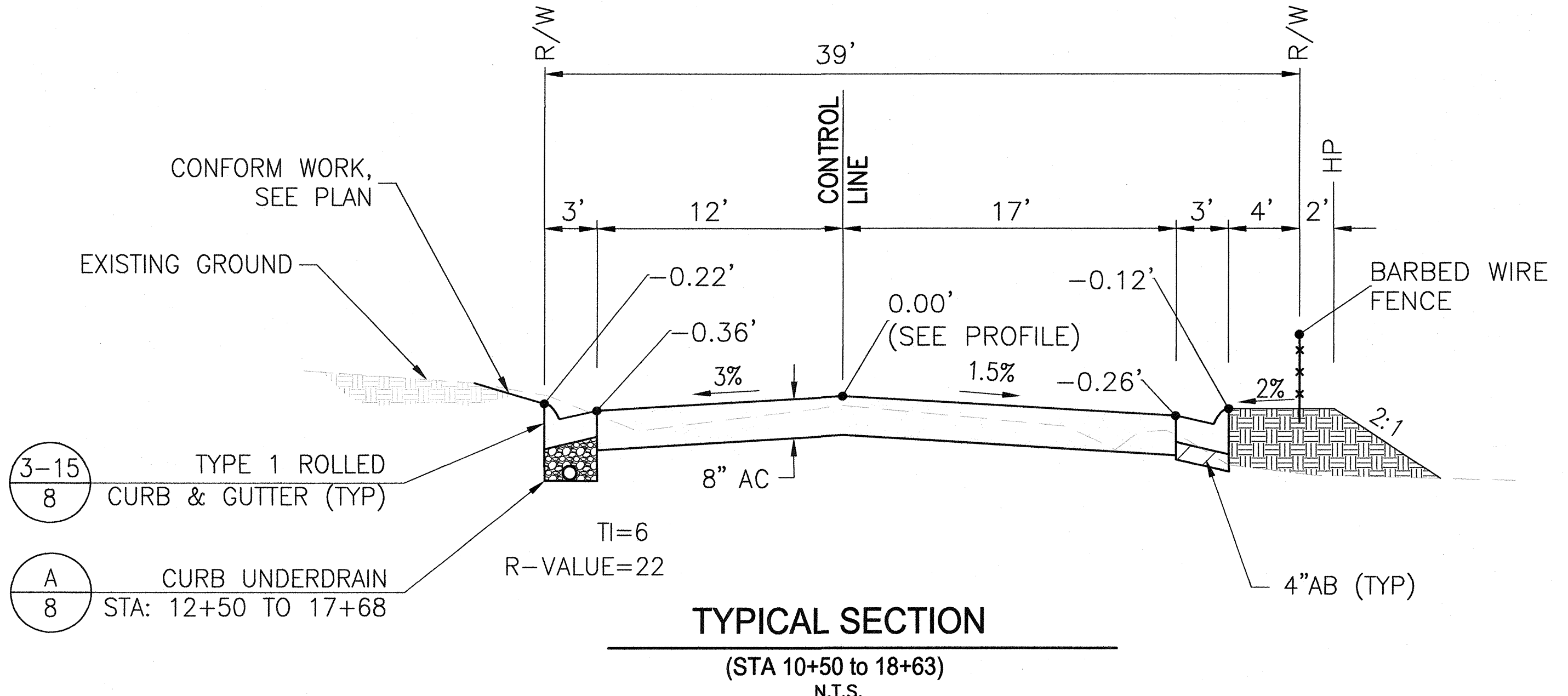
1. ALL SANITARY SEWER CONSTRUCTION AND MATERIALS SHALL BE IN ACCORDANCE WITH THE SOUTH PLACER MUNICIPAL UTILITY DISTRICT STANDARD SPECIFICATIONS AND IMPROVEMENT STANDARDS FOR SANITARY SEWERS, LATEST EDITION. THE CONTRACTOR SHALL BE RESPONSIBLE FOR OBTAINING ALL INFORMATION, DRAWINGS, AND REQUIREMENTS FROM SPMUD NECESSARY TO COMPLETE THE WORK SHOWN ON THESE PLANS.
2. THE CONTRACTOR SHALL NOTIFY SPMUD 48 HOURS PRIOR TO THE START OF SEWER CONSTRUCTION AND TO ARRANGE FOR A PRE-CONSTRUCTION MEETING. (916) 786-8555.
3. ALL SEWER PIPE SHALL BE VITRIFIED CLAY PIPE, EXTRA STRENGTH, UNLESS OTHERWISE NOTED. THE CONTRACTOR SHALL EXPOSE EXISTING SEWER LINES TO VERIFY LOCATION AND INVERTS PRIOR TO THE PLACEMENT OF PIPE.
4. THE FLOW LINE OF ANY SANITARY SEWER SERVICE ENTERING A MANHOLE SHALL MATCH THE CROWN OF THE EXISTING SEWER MAINLINE UNLESS OTHERWISE NOTED.
5. THE CONTRACTOR SHALL NOTIFY SPMUD FIVE (5) DAYS PRIOR TO SCHEDULED AIR TEST, T.V. INSPECTION, AND BALL AND FLUSH. (916) 786-8555.
6. ALL SEWER SERVICES SHALL HAVE AN INSPECTION CLEANOUT INSTALLED FOR T.V. INSPECTION PURPOSES. SERVICES WITH DEPTHS GREATER THAN 5 FEET AT THE RIGHT-OF-WAY / PROPERTY LINE MAY BE REQUIRED TO HAVE COMBINATION PARTIAL CLEANOUTS / INSPECTION CLEANOUT INSTALLED BY THE CONTRACTOR AT THE DIRECTION OF SPMUD.
7. PRIOR TO THE START OF ANY GRADING OR CONSTRUCTION, THE CONTRACTOR SHALL T.V. INSPECT AND MAY BE REQUIRED TO PERFORM AN ACCEPTANCE TEST (AIR TEST) FOR LEAKAGE ON THE EXISTING SEWER WITHIN THIS PROJECT TO DEMONSTRATE THE CONDITION THEREOF. UPON COMPLETION OF CONSTRUCTION THE CONTRACTOR SHALL RE-TEST AND RE-T.V. INSPECT THE SAME EXISTING SEWER, ANY INDICATED ADDITIONAL DAMAGE SHALL BE THE RESPONSIBILITY OF THE CONTRACTOR AND REPAIRED AT HIS EXPENSE PRIOR TO SEWER FINAL. ALL WORK AND TESTING IS THE RESPONSIBILITY OF THE CONTRACTOR AND SHALL BE PERFORMED IN THE PRESENCE OF SPMUD, THE CONTRACTOR IS ADVISED THAT THE SEWER IS SUBJECT TO CLEANING PRIOR TO T.V. INSPECTION.
8. PORTIONS OF THE EXISTING SEWER MAY BE SUBJECT TO CLEANING BY THE CONTRACTOR, AT THE DIRECTION OF SPMUD, PRIOR TO SEWER FINAL.
9. SEWER MANHOLES SHALL BE VACUUM TESTED FOR LEAKAGE PER SPMUD REQUIREMENTS.
10. ANY WATER OR DEBRIS ENTERING THE SEWERS TO BE CONSTRUCTED UNDER THESE PLANS SHALL NOT BE DISCHARGED TO THE EXISTING SEWER SYSTEM, PLUGS OF THE MECHANICAL TYPE, OR AS APPROVED BY SPMUD, SHALL BE INSTALLED IN THE MANHOLES AT THE POINTS OF CONNECTION TO THE EXISTING SYSTEM, AND SHALL BE REMOVED ONLY AT THE DIRECTION OF SPMUD. INFLATABLE DEVICES ARE NOT PERMISSIBLE.
15. CONTRACTOR SHALL ACCURATELY REFERENCE, MARK AND DOCUMENT ALL SPMUD SEWER STRUCTURES, IN A WAY ACCEPTABLE TO THE DISTRICT, PRIOR TO REMOVING CASTINGS COVERS, ETC. IF APPLICABLE. REFERENCE MARKINGS SHALL BE MAINTAINED THROUGHOUT THE PROJECT. SEWER STRUCTURES SHALL BE MADE ACCESSIBLE AS SOON AS POSSIBLE AFTER CONSTRUCTION. IN SOME CASES THE DISTRICT MAY REQUIRE MANHOLES BE KEPT ACCESSIBLE AT ALL TIMES. CASTINGS, COVERS, ETC. SHALL BE SET TO GRADE IN ACCORDANCE WITH CITY OF ROCKLIN STANDARDS.

MINIMUM REQUIREMENTS FOR SEWER BYPASS OPERATIONS

- SEWER REHABILITATION WILL NECESSITATE THE BYPASS OF LIVE SEWER LINES, INCLUDING SERVICE LATERALS. THE CONTRACTOR SHALL MAKE PROVISIONS TO ENSURE UNINTERRUPTED SERVICE TO THE HOMES SERVED BY THE PIPING UNDER REHABILITATION IN SUCH A FASHION, THAT NO SEWER SPILLS OCCUR. THE CONTRACTOR SHALL SUBMIT A BYPASS PLAN TO THE DISTRICT AND OBTAIN THE APPROVAL OF THE DISTRICT FOR THE METHOD OF SEWER BYPASS PRIOR TO INITIATION. LABOR AND EQUIPMENT USED FOR SEWER BYPASS OPERATIONS SHALL BE PROVIDED BY THE CONTRACTOR AT HIS OWN EXPENSE.
- THE DISTRICT SHALL PROVIDE FLOW CHARACTERISTICS AND ESTABLISH THE OUTPUT CAPACITY (IN GPM) REQUIRED FOR THE PUMPS BASED ON KNOWN DAILY PEAK FLOWS WITH A SAFETY FACTOR.
 - SEWER LINE AND LATERALS SHALL BE REINSTATED AT THE END OF EACH SHIFT OR CONTINUOUS MONITORING BY THE CONTRACTOR SHALL BE PROVIDED.
 - A MANHOLE SHALL NOT BE USED AS A WET WELL. IT IS REQUIRED THAT THE SUCTION HOSE(S) BE COUPLED TO A FLOW-THROUGH PLUG THAT IS INSERTED INTO THE UPSTREAM PIPE COMING INTO A MANHOLE.
 - REDUNDANCY. TWO PUMPS, EACH WITH THE CAPABILITY OF HANDLING THE FLOWS, ARE REQUIRED. THE SUCTION HOSES OF THE TWO PUMPS SHALL BOTH CONNECT TO THE FLOW-THROUGH PLUG WITH A WYE FITTING. IF THE PRIMARY PUMP FAILS, THE SECOND PUMP CAN BE STARTED IMMEDIATELY AND TAKE THE FLOWS UNTIL THE PRIMARY PUMP FAILURE IS RESOLVED. THE DISCHARGE PIPE/HOSE SHALL BE CONNECTED TO THE PUMPS IN THE SAME MANNER AS THE SUCTION HOSES UNLESS OTHERWISE APPROVED BY THE DISTRICT.
 - THE ENTIRE SYSTEM SHALL BE TESTED WITH FRESH WATER, IN THE PRESENCE OF THE DISTRICT INSPECTOR, FOR LEAKAGE. ANY AND ALL LEAKS SHALL BE CORRECTED PRIOR TO STARTUP OF THE BYPASS OPERATIONS.
 - FOR LARGE VOLUME SETUPS, THE DISTRICT MAY REQUIRE THAT THE BYPASS OPERATIONS BE MONITORED CONTINUOUSLY TO ENSURE PROPER FUNCTION.
 - BYPASS OPERATIONS SHALL ACCOMMODATE TRAFFIC FROM THE PUBLIC STREETS AND PRIVATE PROPERTY SUCH AS DRIVEWAY ACCESS AND MUST COMPLY WITH THE LOCAL GOVERNING AGENCY REQUIREMENTS.
 - THE CONTRACTOR'S SUBMITTAL OF HIS PROPOSED BYPASS PLAN MUST COMPLY WITH THE ABOVE MINIMUM REQUIREMENTS AND MUST INCLUDE A SIMPLE DETAIL DRAWING OF THE SETUP, THE PUMP CURVE(S), SIZE/TYPER OF THE HOSE/PIPING AND A NARRATIVE DESCRIBING THE BYPASS OPERATIONS.
 - CONTRACTOR SHALL PROVIDE AN EMERGENCY RESPONSE PLAN THAT DETAILS SPILL CONTAINMENT AND PROPER CLEAN UP.
 - CONTRACTOR MAY BE LIABLE FOR COSTS INCURRED BY DISTRICT RELATED TO A FAILURE OF THE BYPASS OPERATIONS.

PLACER COUNTY WATER AGENCY NOTES

- INSPECTOR - PHONE (530) 823-4885
PCWA MAP NO. 25-C-10 & 25-C-11
1. PLACER COUNTY WATER AGENCY FACILITIES SHALL BE CONSTRUCTED IN ACCORDANCE WITH THE AGENCY'S LATEST REVISED STANDARDS & SPECIFICATIONS.
 2. THE CONTRACTOR SHALL PROVIDE TWO WORKING DAYS (48 HOURS) NOTICE TO THE PLACER COUNTY WATER AGENCY INSPECTOR (530-823-4885) PRIOR TO BEGINNING WORK ON WATER FACILITIES AND BY 7:30 A.M. EACH DAY WORK ON WATER FACILITIES OCCURS.
 3. THE AGENCY'S APPROVAL OF THESE PLANS IS FOR WATER FACILITIES ONLY.
 4. NO JOINTS ON MAIN WITHIN 8' OF F.H. TEE.
 5. ROCKLIN PRESSURE ZONE, HGL#440, TEST PRESSURE=150 PSI (MIN.).
 6. RADIUSING OF PVC PIPE IS NOT ALLOWED, ANGLE FITTINGS REQUIRED AT ALL CHANGES OF DIRECTION OF PVC PIPE.
 7. IN ACCORDANCE WITH THE UNIFORM PLUMBING CODE, IN AREAS WHERE THE STATIC WATER PRESSURE IS IN EXCESS OF 80 PSI, A PRESSURE REGULATOR SHALL BE INSTALLED ON THE CUSTOMER'S SIDE OF THE SERVICE METER. THE PRESSURE REGULATOR SHALL BE OWNED AND MAINTAINED BY THE CUSTOMER.
 8. THE CONTRACTOR SHALL MAINTAIN CONTINUOUS SERVICE TO THE AGENCY'S CUSTOMERS, INCLUDING TEMPORARY SERVICE WITH POTABLE LINES, EXCEPT DURING SCHEDULED SHORT TERM, SINGLE DAY OUTAGES. THE CONTRACTOR SHALL PROMPTLY REPAIR ANY DAMAGE OR OBSTRUCTION TO PRIVATE PIPELINES TO THE SATISFACTION OF THE AGENCY AND ITS CUSTOMER. SCHEDULED OUTAGES REQUIRE A MINIMUM OF 10 WORKING DAYS ADVANCE NOTICE TO THE AGENCY OF THE REQUESTED OUTAGE TIME AND DATE(S). OUTAGES MAY BE SCHEDULED ON TUESDAYS, WEDNESDAYS AND THURSDAYS BETWEEN 7A.M. AND 4P.M. THE ABOVE RESTRICTION MAY BE ALTERED BY THE AGENCY AT ITS SOLE DISCRETION.



RECORD DRAWING: ALL INFORMATION SHOWN ON THESE PLANS HAS BEEN REVIEWED BY AN AREA ENGINEER OF THE DISTRICT OF THE UNEMPLOYED ENGINEER. ADJUSTMENTS MADE IN THE FIELD DURING CONSTRUCTION ARE NOTED ON THESE PLANS. THE ENGINEER IS ADVISED IN WRITING OF SUCH CHANGE BY THE OWNER, DEVELOPER, CONTRACTOR OR THE CITY OF ROCKLIN.

NO.	BY	DATE	DESCRIPTION

UBORA ENGINEERING & PLANNING
"EXCELLENCE"
2901 DOUGLAS BOULEVARD, SUITE 285
ROSEVILLE, CA 95662 (916) 780-2500
www.ubora.com

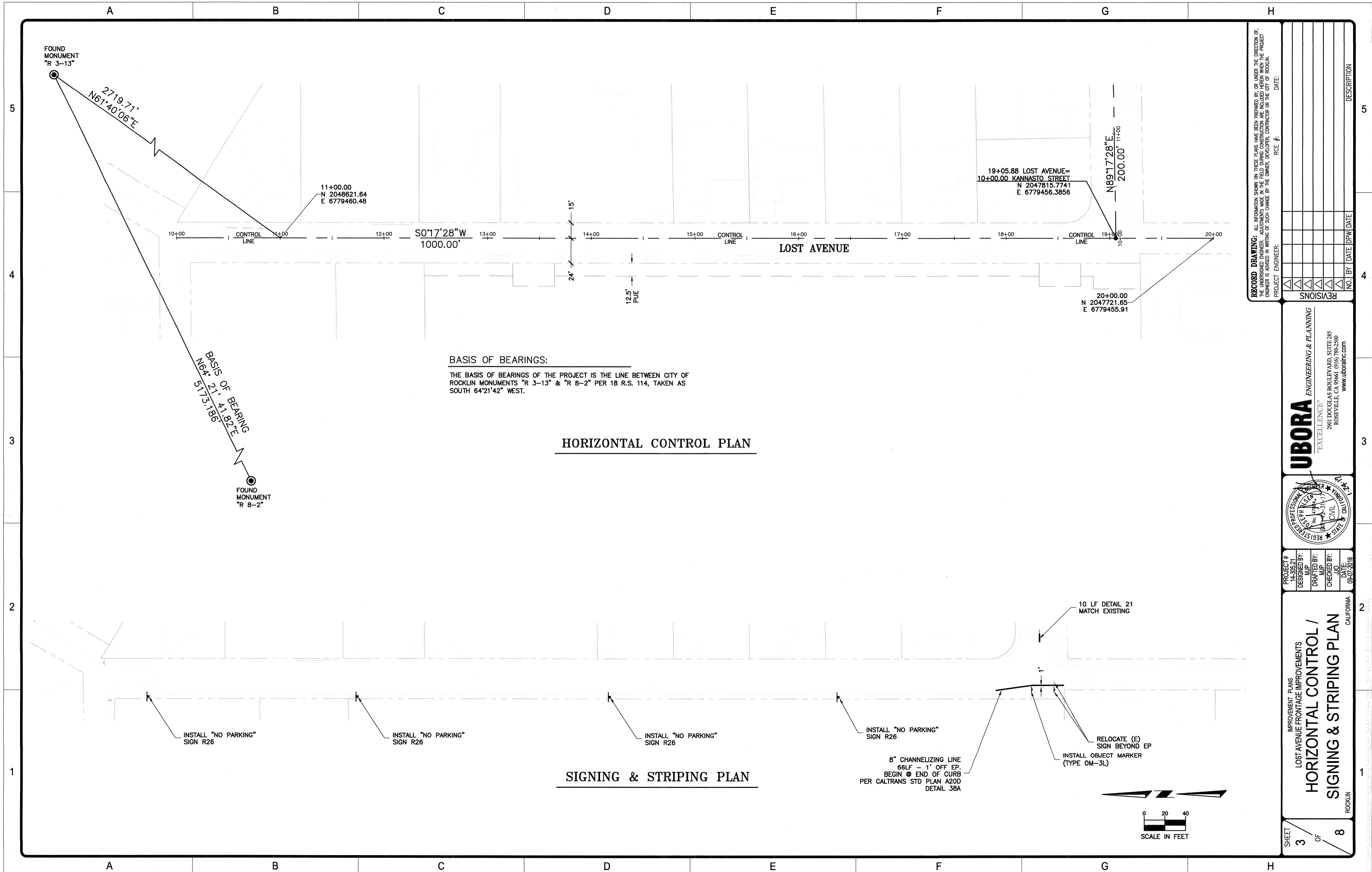
PROJECT # 14-20821
DESIGNED BY: M.P.
DRAFTED BY: M.P.
CHECKED BY: J.D.
DATE: 08/07/2016

IMPROVEMENT PLANS
LOST AVENUE FRONTAGE IMPROVEMENTS

NOTES & TYPICAL SECTION

2 OF 8

SHEET



RECORD DRAWING: ALL INFORMATION SHOWN ON THESE PLANS HAS BEEN REVIEWED BY OR UNDER THE SUPERVISION OF THE LICENSED ENGINEER. ADJUSTMENTS MADE IN THE FIELD DURING CONSTRUCTION ARE INCLUDED HEREIN WHEN THE PROJECT ENGINEER IS ADVISED IN WRITING OF SUCH CHANGE BY THE OWNER, DEVELOPER, CONTRACTOR OR THE CITY OF ROCKLIN. PROJECT ENGINEER: _____ RCE #: _____ DATE: _____

NO.	BY	DATE	DESCRIPTION

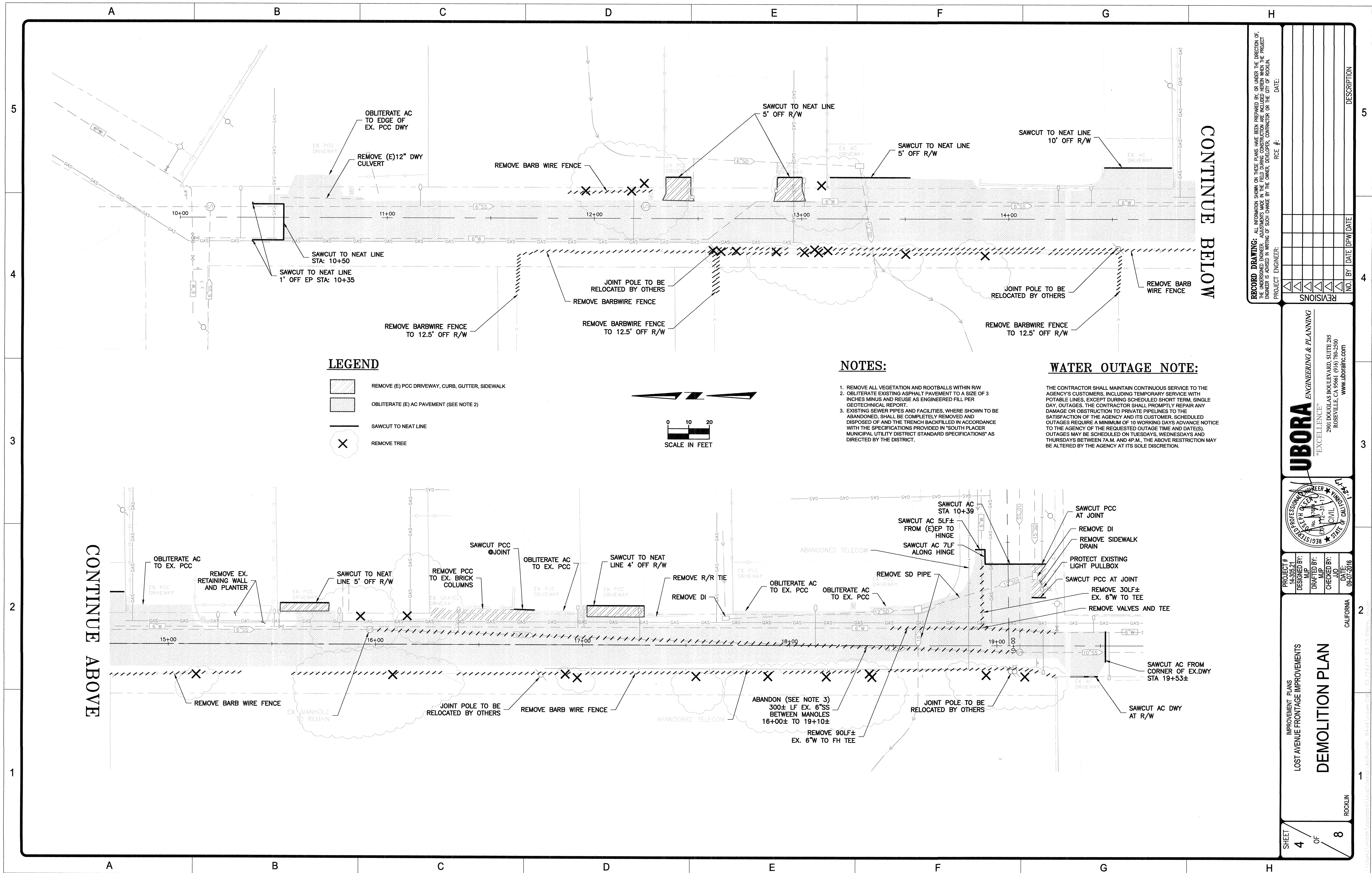
UBORA ENGINEERING & PLANNING
 "EXCELLENCE"
 2801 DOUGLAS BOULEVARD, SUITE 285
 ROSEVILLE, CA 95661 (916) 780-2500
 www.ubora.com

REGISTERED PROFESSIONAL ENGINEER
 CIVIL
 STATE OF CALIFORNIA
 No. 47447
 Exp. 07/31/17





PROJECT # 14-308.21
 DESIGNED BY: M.P.
 DRAFTED BY: M.P.
 CHECKED BY: J.J.D.
 DATE: 08/07/2016

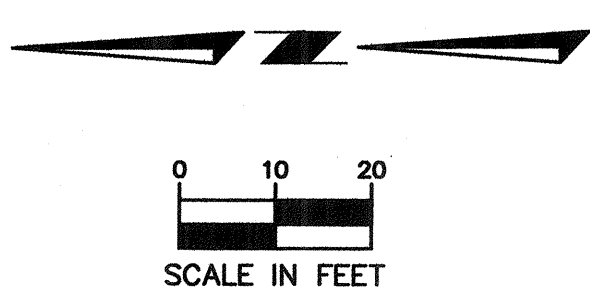
IMPROVEMENT PLANS
LOST AVENUE FRONTAGE IMPROVEMENTS
HORIZONTAL CONTROL /
SIGNING & STRIPING PLAN
 CALIFORNIA
 ROCKLIN

SHEET 3 OF 8



LEGEND

-  REMOVE (E) PCC DRIVEWAY, CURB, GUTTER, SIDEWALK
-  OBLITERATE (E) AC PAVEMENT (SEE NOTE 2)
-  SAWCUT TO NEAT LINE
-  REMOVE TREE



NOTES:

1. REMOVE ALL VEGETATION AND ROOTBALLS WITHIN RW
2. OBLITERATE EXISTING ASPHALT PAVEMENT TO A SIZE OF 3 INCHES MINUS AND REUSE AS ENGINEERED FILL PER GEOTECHNICAL REPORT.
3. EXISTING SEWER PIPES AND FACILITIES, WHERE SHOWN TO BE ABANDONED, SHALL BE COMPLETELY REMOVED AND DISPOSED OF AND THE TRENCH BACKFILLED IN ACCORDANCE WITH THE SPECIFICATIONS PROVIDED IN 'SOUTH PLACER MUNICIPAL UTILITY DISTRICT STANDARD SPECIFICATIONS' AS DIRECTED BY THE DISTRICT.

WATER OUTAGE NOTE:

THE CONTRACTOR SHALL MAINTAIN CONTINUOUS SERVICE TO THE AGENCY'S CUSTOMERS, INCLUDING TEMPORARY SERVICE WITH POTABLE LINES, EXCEPT DURING SCHEDULED SHORT TERM, SINGLE DAY, OUTAGES. THE CONTRACTOR SHALL PROMPTLY REPAIR ANY DAMAGE OR OBSTRUCTION TO PRIVATE PIPELINES TO THE SATISFACTION OF THE AGENCY AND ITS CUSTOMER. SCHEDULED OUTAGES REQUIRE A MINIMUM OF 10 WORKING DAYS ADVANCE NOTICE TO THE AGENCY OF THE REQUESTED OUTAGE TIME AND DATE(S). OUTAGES MAY BE SCHEDULED ON TUESDAYS, WEDNESDAYS AND THURSDAYS BETWEEN 7A.M. AND 4P.M., THE ABOVE RESTRICTION MAY BE ALTERED BY THE AGENCY AT ITS SOLE DISCRETION.

CONTINUE BELOW

CONTINUE ABOVE

RECORD DRAWING: ALL INFORMATION SHOWN ON THESE PLANS HAS BEEN PREPARED BY OR UNDER THE DIRECTION OF THE UNDERSIGNED ENGINEER. A SIGNATURE AND SEAL OF THE ENGINEER IS REQUIRED FOR THIS DRAWING TO BE A VALID PRODUCT OF THE ENGINEER. ANY CHANGES TO THIS DRAWING SHALL BE MADE BY THE ENGINEER OR THE CITY OF ROCKLIN. PROJECT ENGINEER: _____ DATE: _____

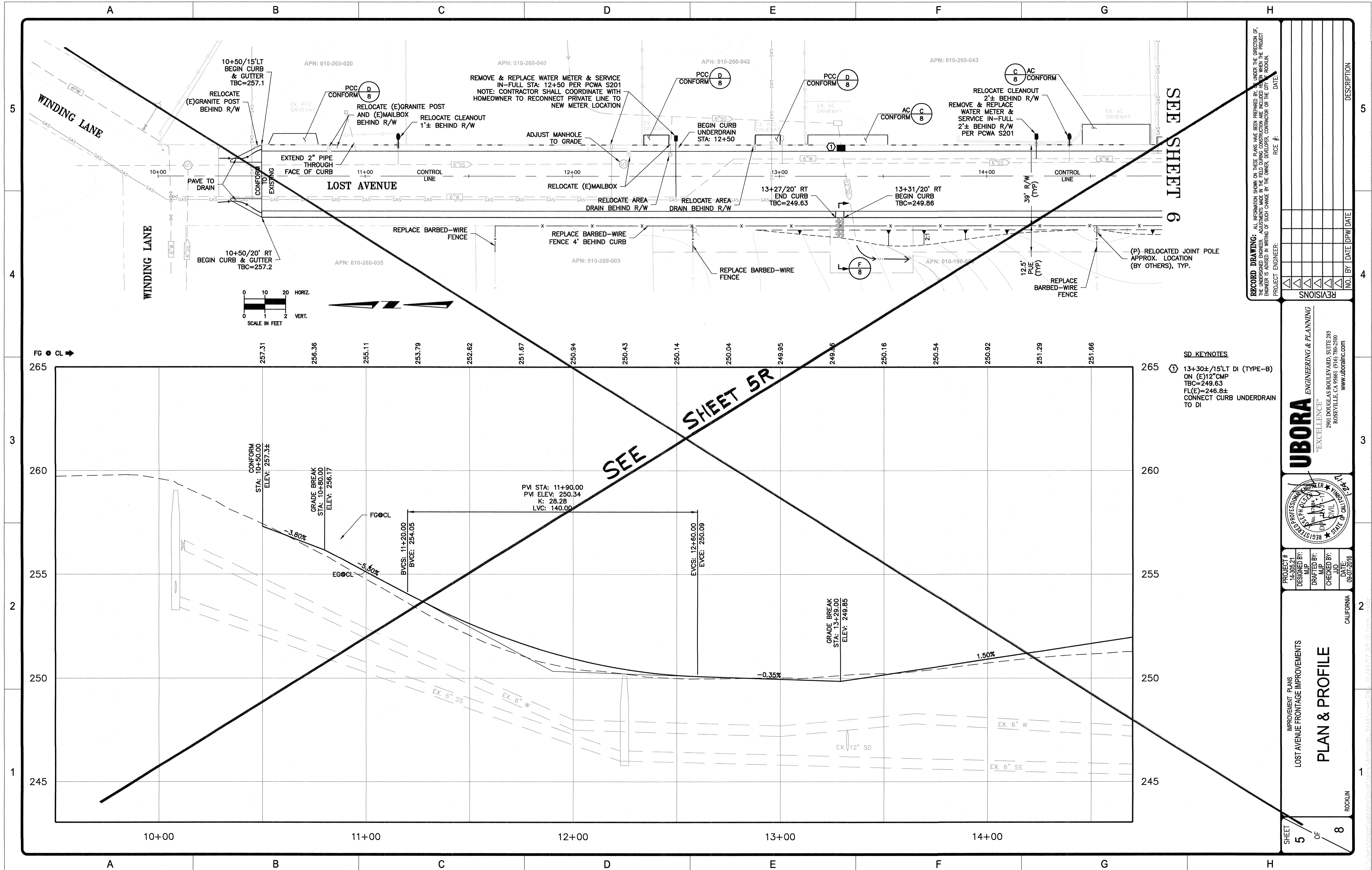
NO.	BY	DATE	DESCRIPTION

UBORA ENGINEERING & PLANNING
 "EXCELLENCE"
 2901 DOUGLAS BOULEVARD, SUITE 285
 ROCKVILLE, CA 95661 (916) 780-2500
 www.ubora.com



PROJECT #	14-395-21
DESIGNED BY:	M.P.
DRAFTED BY:	M.P.
CHECKED BY:	J.O.
DATE	08-07-2016

IMPROVEMENT PLANS
 LOST AVENUE FRONTAGE IMPROVEMENTS
DEMOLITION PLAN
 SHEET 4 OF 8
 ROCKLIN CALIFORNIA



SEE SHEET 6

SEE SHEET 5R

RECORD DRAWING: ALL INFORMATION SHOWN ON THESE PLANS HAS BEEN PREPARED BY OR UNDER THE SUPERVISION OF THE UNDERSIGNED ENGINEER. ADJUSTMENTS MADE IN THE FIELD DURING CONSTRUCTION ARE INCLUDED HEREIN WHEN THE PROJECT ENGINEER IS ADVISED IN WRITING OF SUCH CHANGE BY THE OWNER, DEVELOPER, CONTRACTOR OR THE CITY ENGINEER. PROJECT ENGINEER: DATE: RCE #:

NO.	BY	DATE	DESCRIPTION

SD KEYNOTES
 (1) 13+30±/15'LT DI (TYPE-B)
 ON (E)12" CMP
 TBC=249.63
 FL(E)=246.8±
 CONNECT CURB UNDERDRAIN TO DI

UBORA ENGINEERING & PLANNING
 "EXCELLENCE"
 2901 DOUGLAS BOULEVARD, SUITE 285
 ROSELILLE, CA 95661 (916) 780-2500
 www.uborainc.com

REGISTERED PROFESSIONAL ENGINEER
 CIVIL
 No. 47884
 State of California

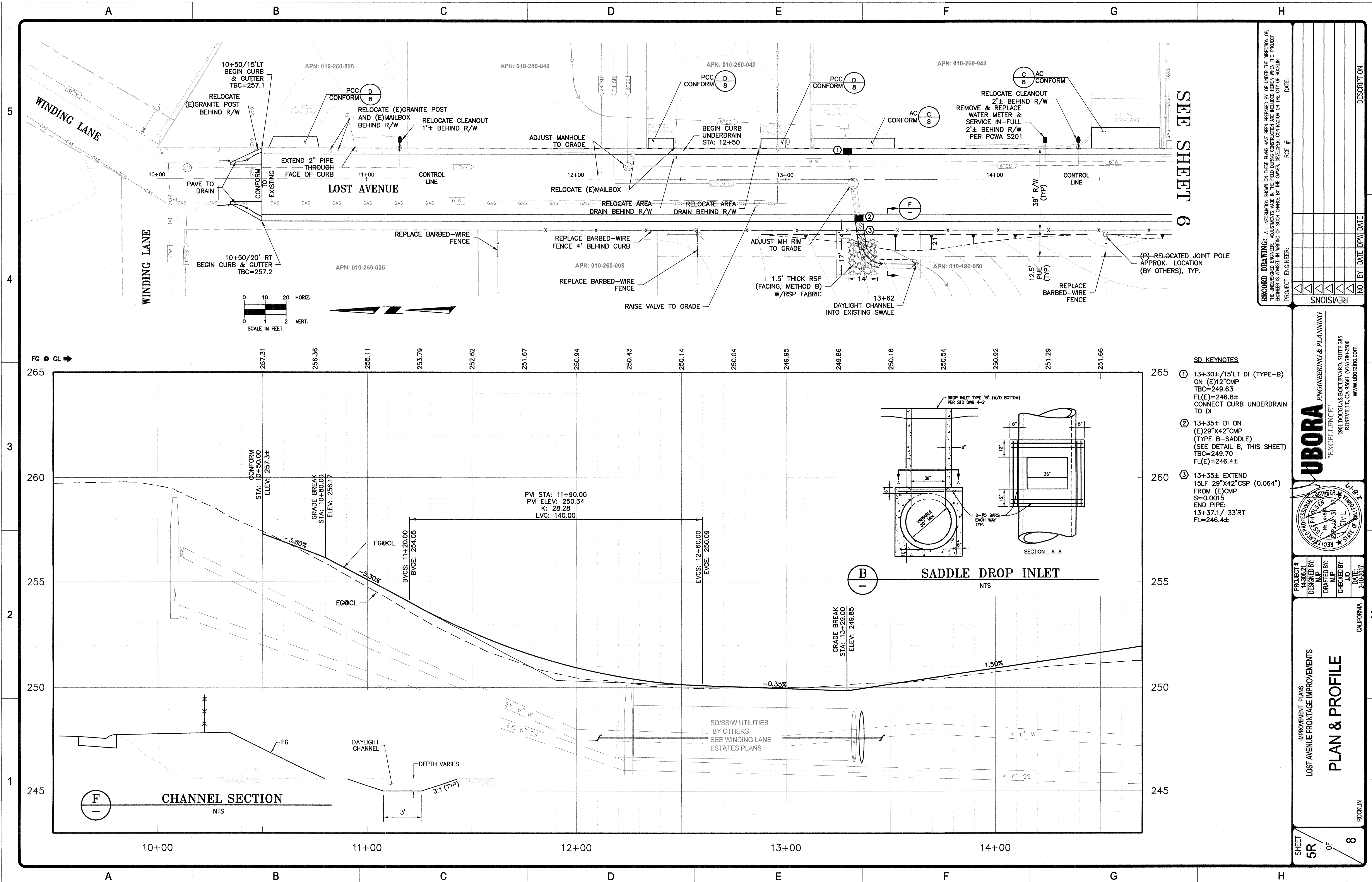
PROJECT # 14-30521
 DESIGNED BY: M.P.
 DRAFTED BY: M.P.
 CHECKED BY: JJO
 DATE: 08/07/2016

IMPROVEMENT PLANS
 LOST AVENUE FRONTAGE IMPROVEMENTS

PLAN & PROFILE

CALIFORNIA
 ROCKLIN

SHEET 5 OF 8



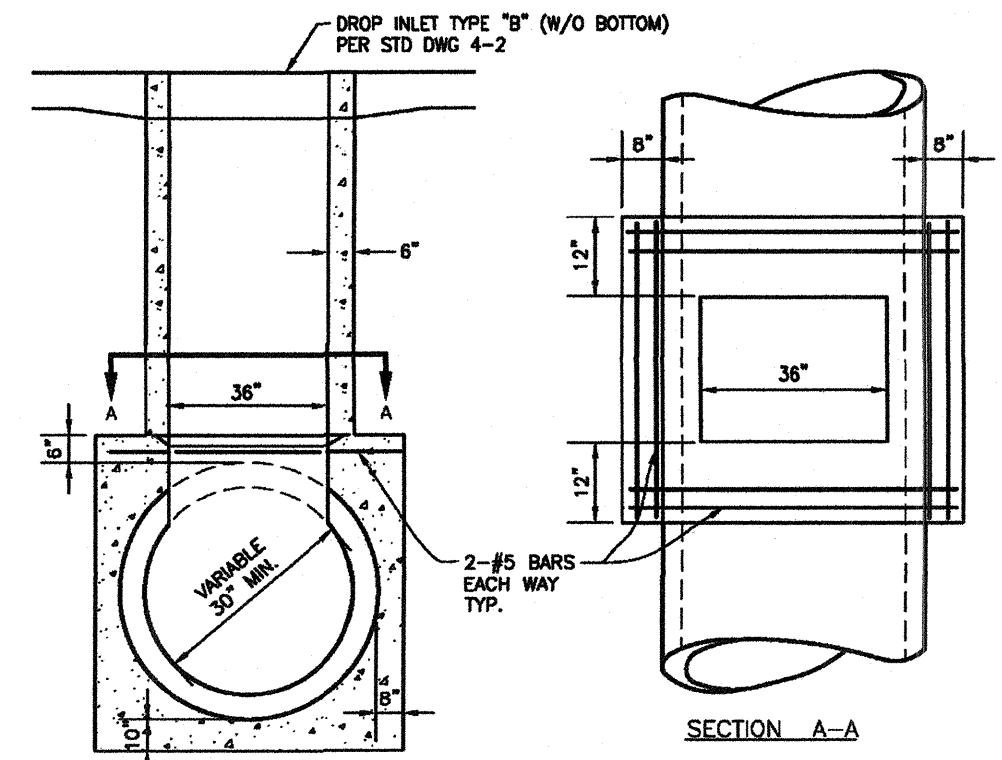
SEE SHEET 6

RECORD DRAWING: ALL INFORMATION SHOWN ON THESE PLANS HAS BEEN PREPARED BY OR UNDER THE SUPERVISION OF THE UNDERSIGNED ENGINEER. ADJUSTMENTS MADE IN THE FIELD DURING CONSTRUCTION ARE NOT TO BE SHOWN ON THESE PLANS. THE ENGINEER IS ADVISED IN WRITING OF SUCH CHANGE BY THE OWNER, DEVELOPER, CONTRACTOR OR THE CITY OF ROCKLIN.

PROJECT ENGINEER: _____ DATE: _____

NO.	BY	DATE	DESCRIPTION

- SD KEYNOTES**
- ① 13+30±/15'LT DI (TYPE-B) ON (E)12" CMP TBC=249.63 FL(E)=246.8± CONNECT CURB UNDERDRAIN TO DI
 - ② 13+35± DI ON (E)29"X42" CMP (TYPE B-SADDLE) (SEE DETAIL B, THIS SHEET) TBC=249.70 FL(E)=246.4±
 - ③ 13+35± EXTEND 15LF 29"X42" CSP (0.064") FROM (E) CMP S=0.0015 END PIPE: 13+37.1/ 33'RT FL=246.4±



CHANNEL SECTION NTS

SADDLE DROP INLET NTS

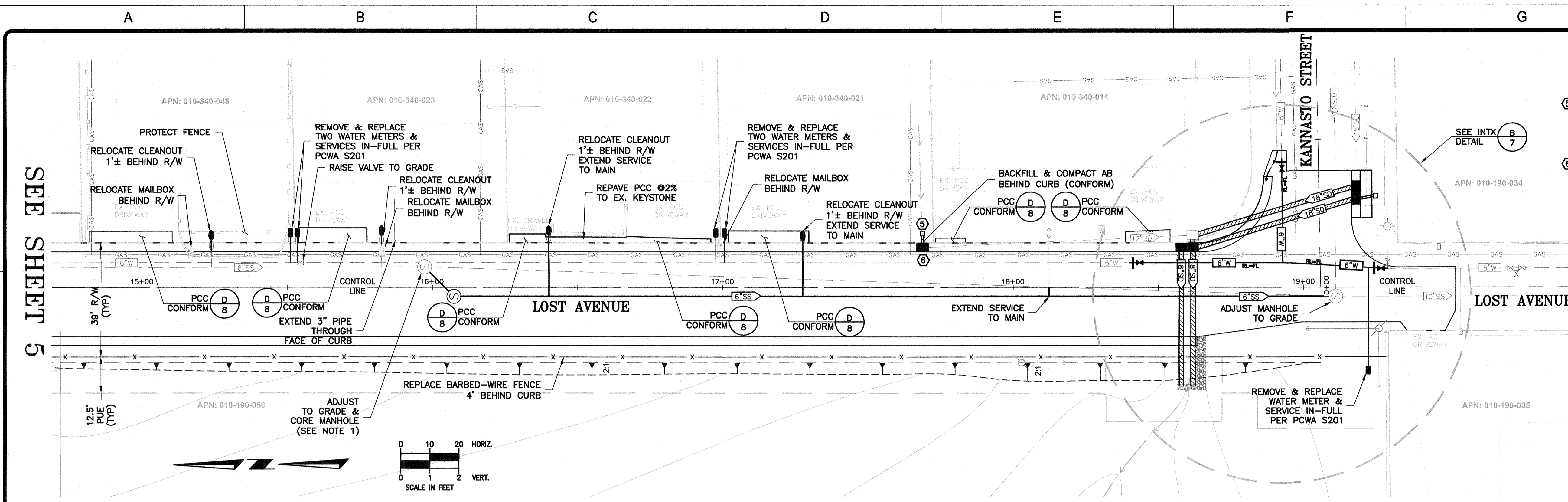
UBORA ENGINEERING & PLANNING
 "EXCELLENCE"
 2901 DOUGLAS BOULEVARD, SUITE 285
 ROSELILLE, CA 95661 (916) 790-5300
 www.ubora.com

PROJECT # 14-3621
 DESIGNED BY: M.P.
 DRAFTED BY: M.P.
 CHECKED BY: J.J.O.
 DATE: 2-10-2017

IMPROVEMENT PLANS
 LOST AVENUE FRONTAGE IMPROVEMENTS
PLAN & PROFILE

CALIFORNIA
 REGISTERED PROFESSIONAL ENGINEER
 CIVIL
 No. 47878
 EXPIRES 12/31/2018

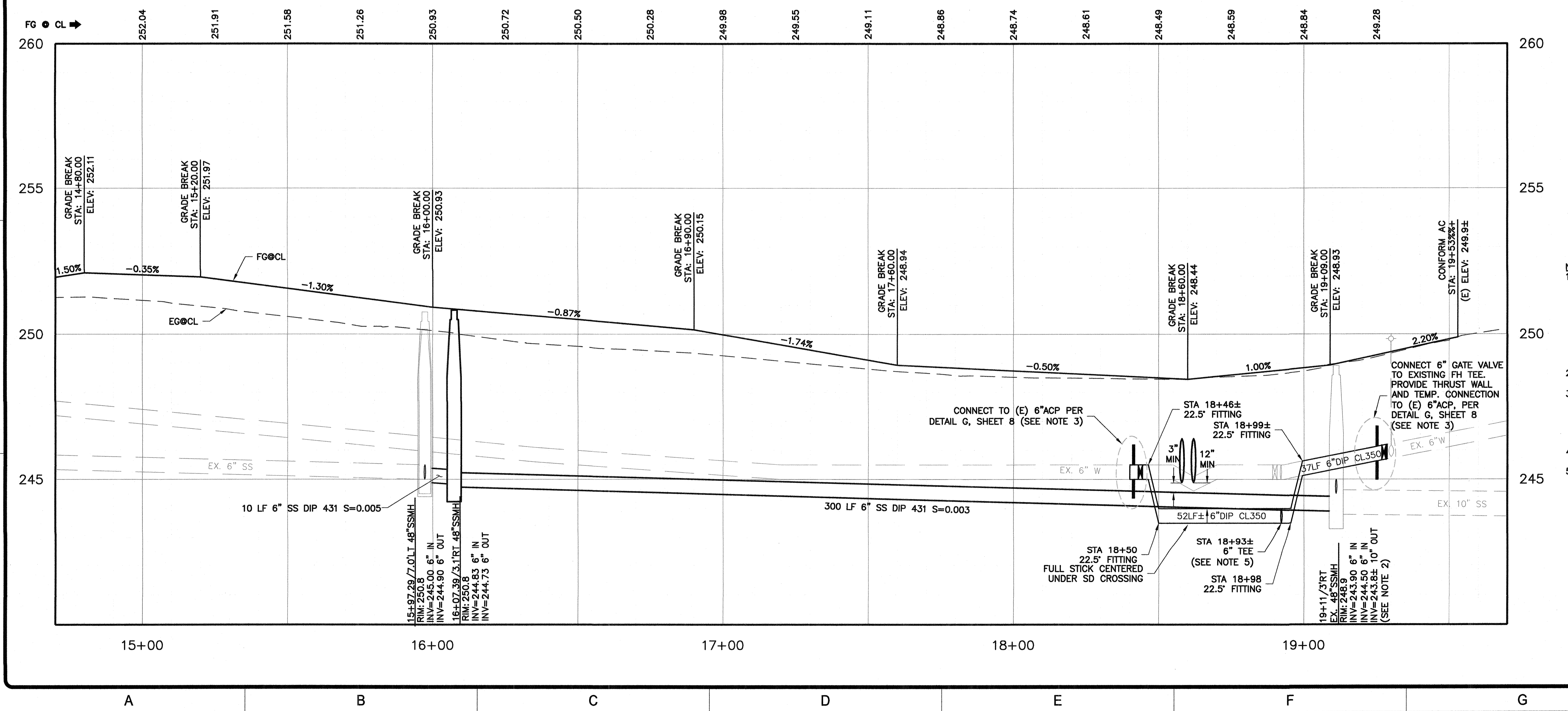
SHEET 5R OF 8



- SD KEYNOTES**
- ⑤ 17+69.0/18"LT "CHRISTY" V12 DRAIN BOX GR=248.3 FL=246.5 3LF 8"HDPE S=0.01
 - ⑥ 17+69.0/15"LT DI (TYPE-B) TBC=248.67 FL(E)=246.3± CONNECT CURB UNDERDRAIN TO DI

RECORD DRAWING: ALL INFORMATION SHOWN ON THESE PLANS HAS BEEN PREPARED BY OR UNDER THE DIRECTION OF THE UNDERSIGNED ENGINEER. ADJUSTMENTS MADE IN THE FIELD DURING CONSTRUCTION ARE INCLUDED HEREIN WHEN THE PROJECT ENGINEER IS ADVISED IN WRITING OF SUCH CHANGE BY THE OWNER, DEVELOPER, CONTRACTOR OR THE CITY OF ROCKLIN. PROJECT ENGINEER: DATE: RCE #:

NO.	BY	DATE	DESCRIPTION



- NOTES**
1. CONTRACTOR SHALL CORE THE EXISTING MANHOLE TO ACCOMMODATE THE NEW SEWER ALIGNMENT. THE EXISTING PIPE SHALL BE PHYSICALLY SEPARATED FROM THE MANHOLE AND THE MANHOLE SHALL BE GROUTED WITH 6-INCHES OF NON-SHRINK GROUT AND THE CHANNEL SHALL BE MODIFIED TO ACCOMMODATE THE CHANGE IN FLOW DIRECTION.
 2. CONTRACTOR SHALL VERIFY INVERT ELEVATION OF EX. 10" SS.
 3. THE THREE ISOLATION VALVES MUST BE INSTALLED AND OPERATIONAL PRIOR TO ALL OTHER WORK ON WATER FACILITIES SUCH THAT THE NEW VALVES CAN BE USED TO ISOLATE THE WATERLINE RELOCATION WORK.
 4. ALL DIP SHALL BE FULLY RESTRAINED PER PCWA ENGINEER.
 5. THRUST BLOCK FOR TEE PER PCWA S211. TEST PRESSURE 150 PSI MAX.

UBORA
"EXCELLENCE"
ENGINEERING & PLANNING
2901 DOUGLAS BOULEVARD, SUITE 285
ROSEVILLE, CA 95661 (916) 790-5500
www.ubora.com

REGISTERED PROFESSIONAL ENGINEER
No. 77447
CIVIL
DATE: 12-17-17

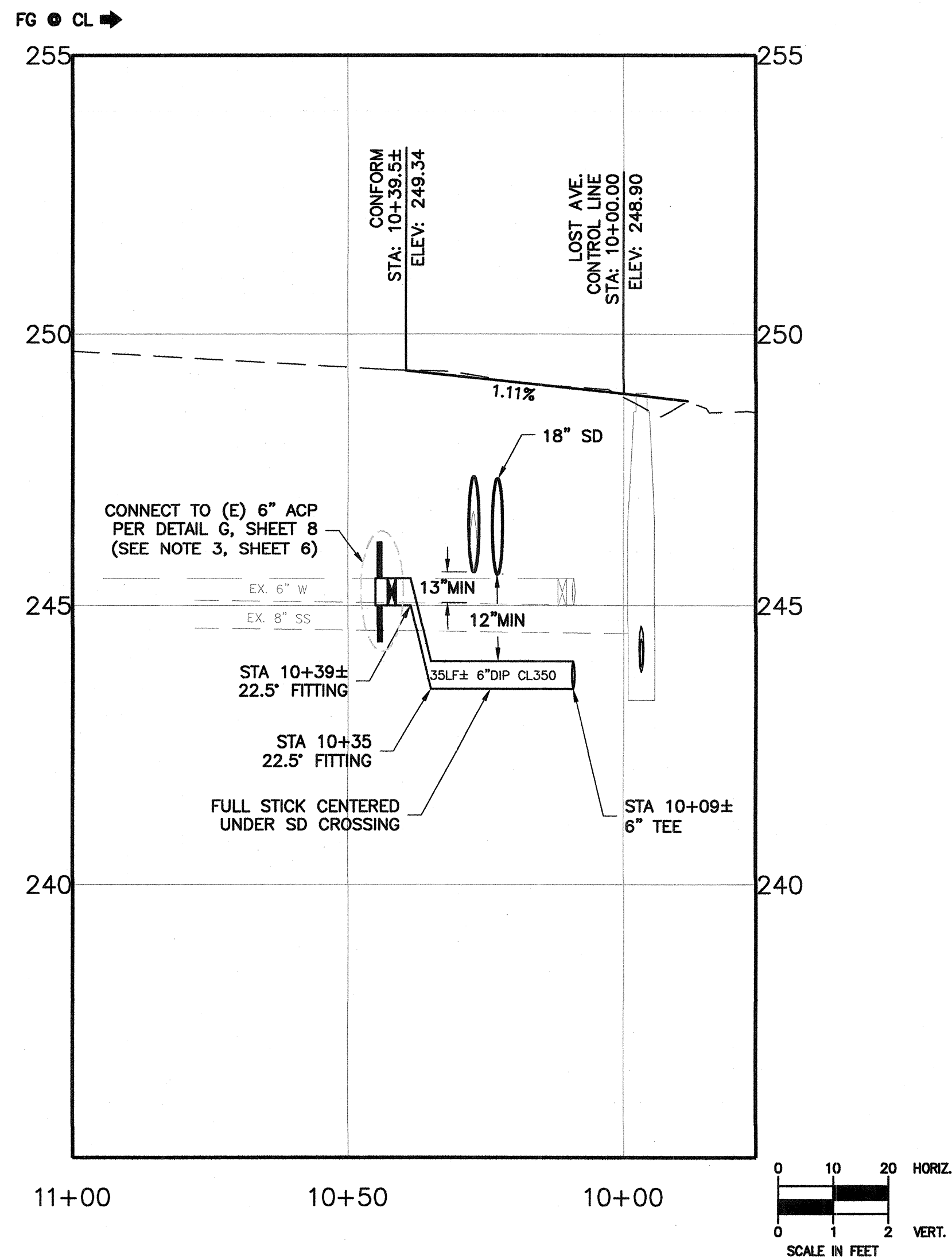
PROJECT # 14-30521
DESIGNED BY: M.P.
DRAFTED BY: M.P.
CHECKED BY: J.J.O.
DATE: 09/27/2016

IMPROVEMENT PLANS
LOST AVENUE FRONTAGE IMPROVEMENTS

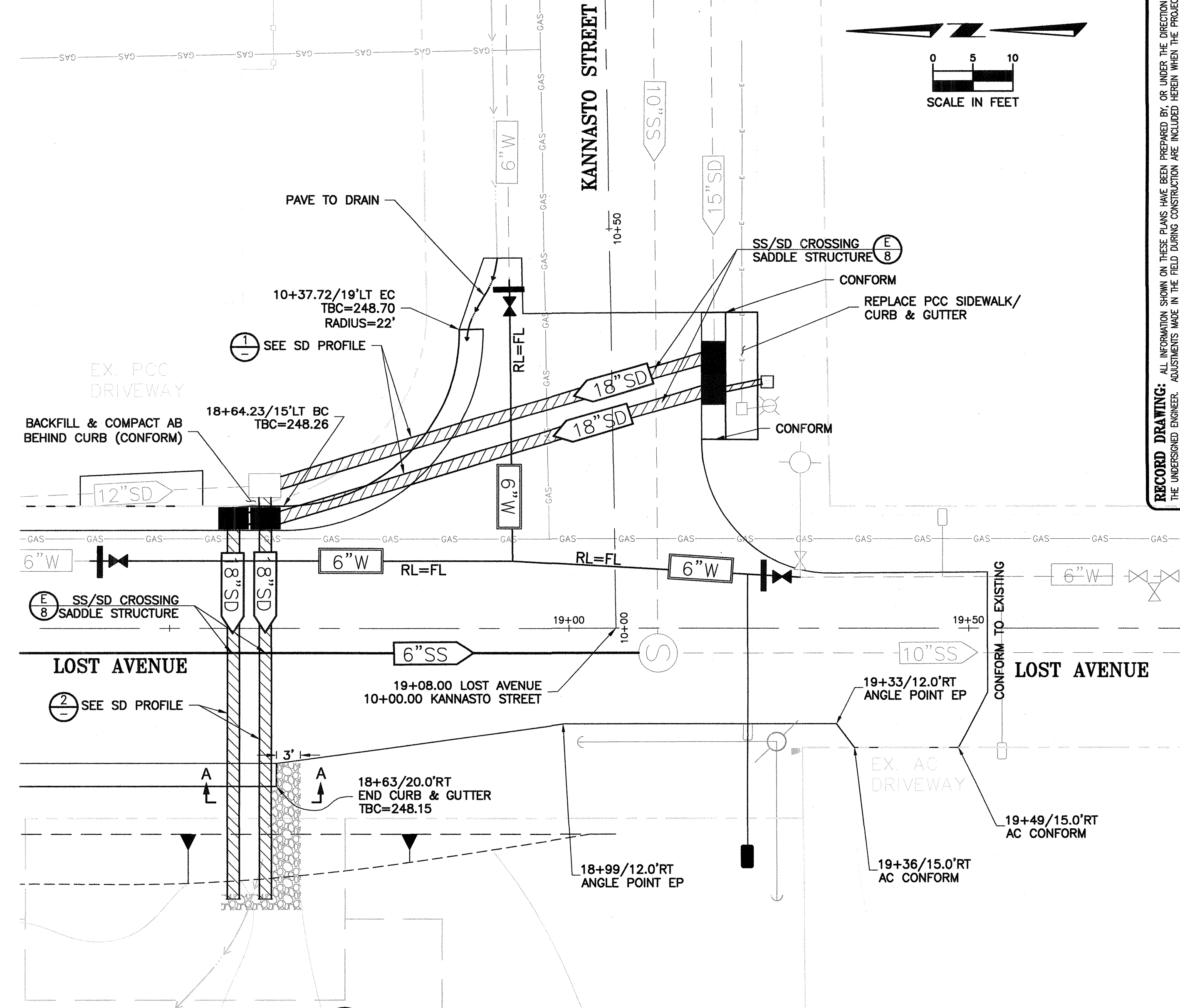
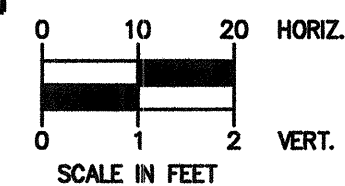
PLAN & PROFILE

SHEET 6 OF 8

ROCKLIN CALIFORNIA

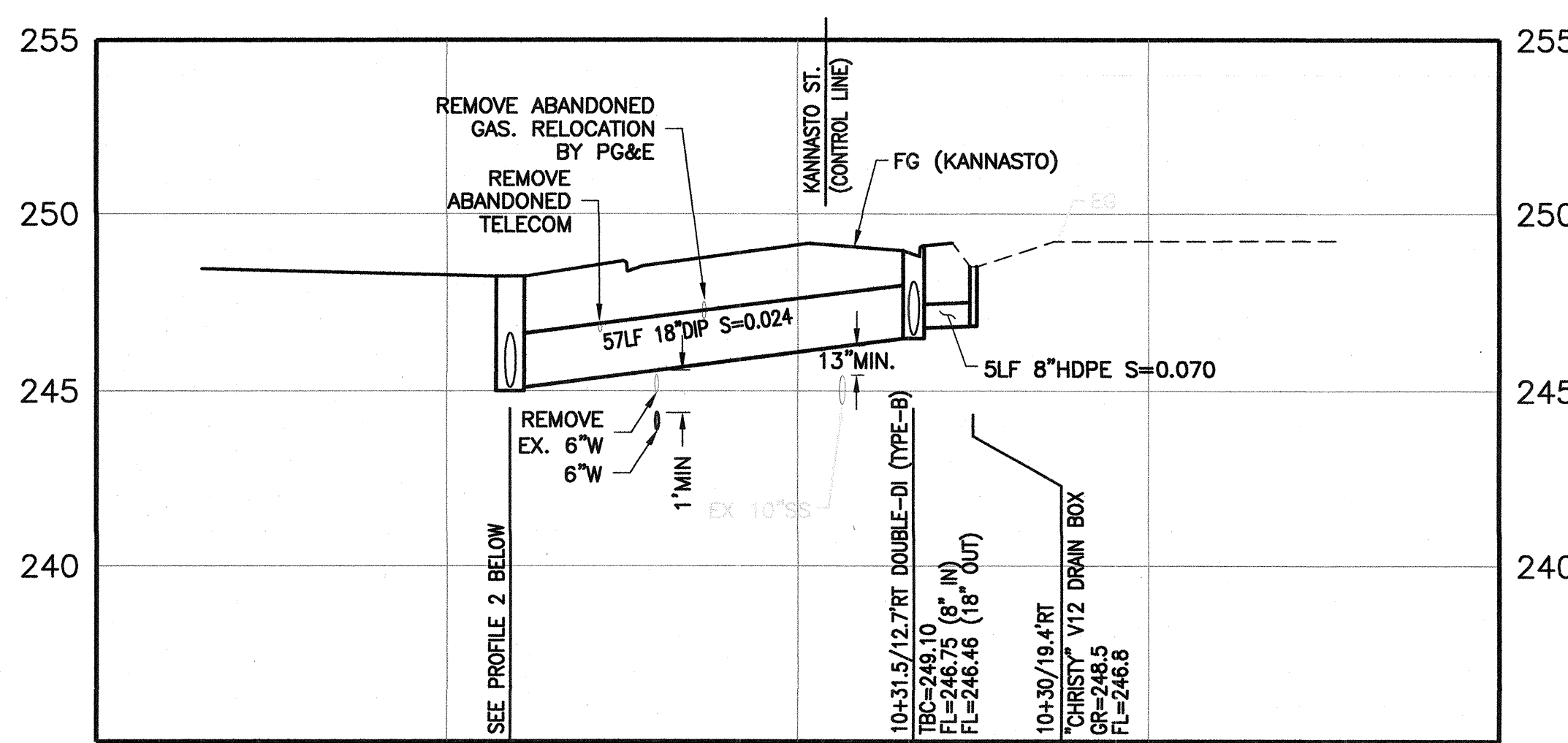


3 KANNASTO STREET
WATER PROFILE

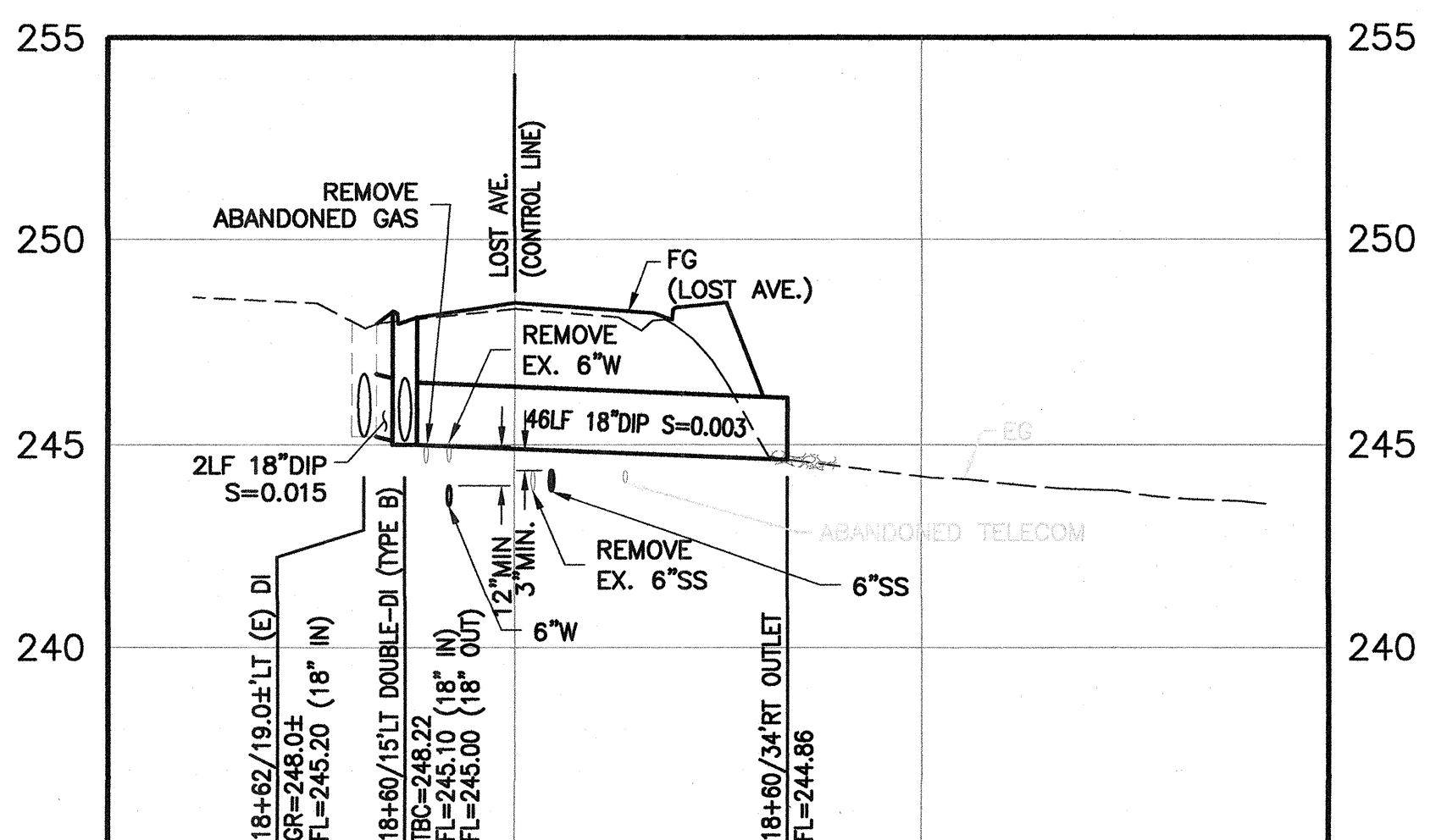
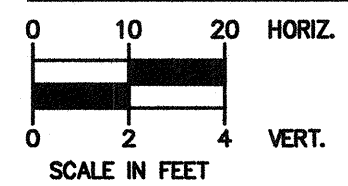


B INTERSECTION DETAIL
(KANNASTO STREET)

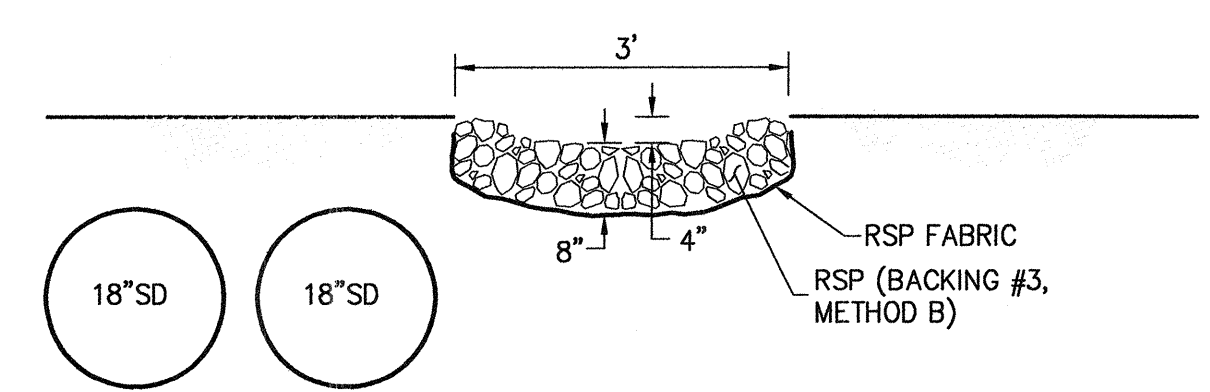
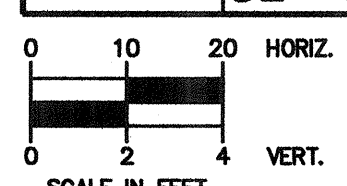
NOTE:
DOUBLE DI CONTROL POINT =
TBC @ MID-POINT BETWEEN DI'S



1 SD PROFILE

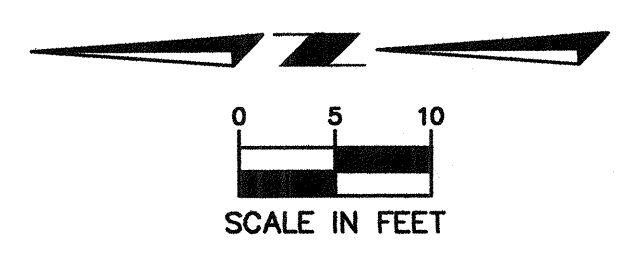


2 SD PROFILE



SECTION A-A
RSP OVER-SIDE DRAIN

NOTE:
RSP & RSP FABRIC SHALL
COMPLY WITH CALTRANS STD
SPECS. SECTION 72.



RECORD DRAWING: ALL INFORMATION SHOWN ON THESE PLANS HAS BEEN PREPARED BY OR UNDER THE SUPERVISION OF THE UNDERSIGNED ENGINEER. ALL DIMENSIONS MADE IN THE FIELD DURING CONSTRUCTION ARE INCLUDED HEREON WHEN THE PROJECT ENGINEER IS ADVISED IN WRITING OF SUCH CHANGE BY THE OWNER, DEVELOPER, CONTRACTOR OR THE CITY OF ROCKLIN. PROJECT ENGINEER: _____ RCE # _____ DATE: _____

NO.	BY	DATE	DESCRIPTION

UBORA ENGINEERING & PLANNING
"EXCELLENCE"
2001 DOUGLAS BOULEVARD, SUITE 285
ROSEVILLE, CA 95661 (916) 786-2500
www.ubora.com

REGISTERED PROFESSIONAL ENGINEER
STATE OF CALIFORNIA
CIVIL
No. 44352
Exp. 12/31/17

PROJECT # 14-30524
DESIGNED BY: MJP
DRAFTED BY: MJP
CHECKED BY: LJO
DATE: 06/07/2016

IMPROVEMENT PLANS
LOST AVENUE FRONTAGE IMPROVEMENTS

INTERSECTION DETAILS

CALIFORNIA
ROCKLIN

SHEET 7 OF 8

