

2018 ANNUAL REPORT

PARKS AND RECREATION



A CELEBRATION OF 125 YEARS!



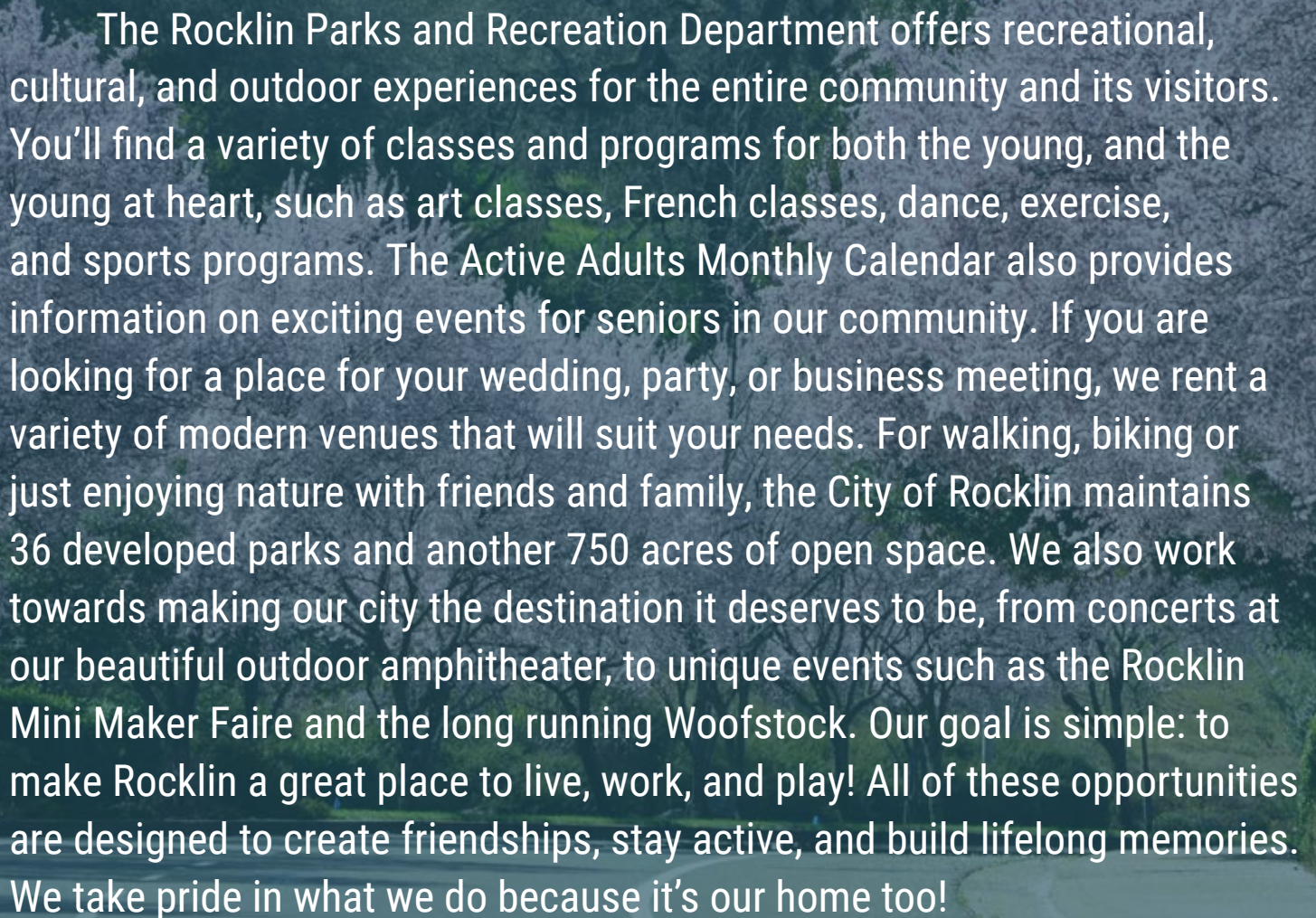
TABLE Of CONTENTS



DEPARTMENT OVERVIEW	3
ORGANIZATION	4
QUALITY OF LIFE	5
HIGHLIGHTS	6-9
BUDGETS	10-11
ARTS	12
PARKS	13-16
RECREATION	17
SPECIAL EVENTS	18-20
VENUE RENTALS	21

A photograph of a large, light-colored stone sign with the word "ROCKLIN" in dark, serif capital letters. The sign is set against a backdrop of trees and a clear sky. In the foreground, there are large, rough-hewn stones and a bed of smaller, colorful pebbles. The text "DEPARTMENT OVERVIEW" is overlaid in white, sans-serif capital letters on a dark blue semi-transparent banner across the top of the image.

DEPARTMENT OVERVIEW

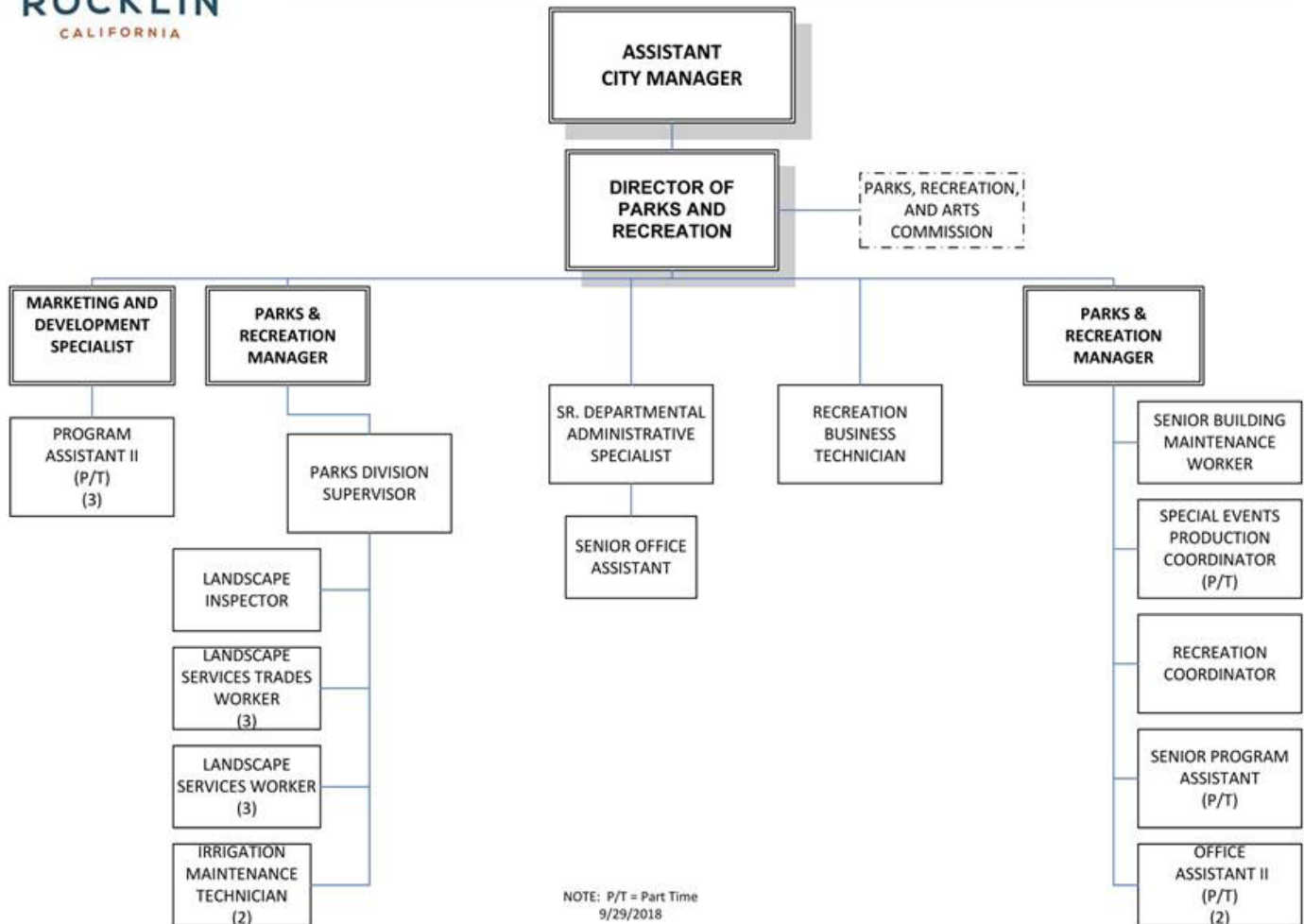
A photograph of a large, light-colored stone sign with the word "ROCKLIN" in dark, serif capital letters. The sign is set against a backdrop of trees and a clear sky. In the foreground, there are large, rough-hewn stones and a bed of smaller, colorful pebbles. The text "DEPARTMENT OVERVIEW" is overlaid in white, sans-serif capital letters on a dark blue semi-transparent banner across the top of the image.

The Rocklin Parks and Recreation Department offers recreational, cultural, and outdoor experiences for the entire community and its visitors. You'll find a variety of classes and programs for both the young, and the young at heart, such as art classes, French classes, dance, exercise, and sports programs. The Active Adults Monthly Calendar also provides information on exciting events for seniors in our community. If you are looking for a place for your wedding, party, or business meeting, we rent a variety of modern venues that will suit your needs. For walking, biking or just enjoying nature with friends and family, the City of Rocklin maintains 36 developed parks and another 750 acres of open space. We also work towards making our city the destination it deserves to be, from concerts at our beautiful outdoor amphitheater, to unique events such as the Rocklin Mini Maker Faire and the long running Woofstock. Our goal is simple: to make Rocklin a great place to live, work, and play! All of these opportunities are designed to create friendships, stay active, and build lifelong memories. We take pride in what we do because it's our home too!

ORGANIZATION



PARKS AND RECREATION DEPARTMENT Organizational Chart – FY 2018-19



QUALITY OF LIFE

HOW PARKS AND RECREATION IMPROVES QUALITY OF LIFE

The City of Rocklin has made substantial investments to support recreation programs and to create quality parks and open space areas for the Rocklin community. Through the Parks & Recreation Department, the city has provided a comprehensive Parks & Recreation system with both passive and active features that address the needs of all residents, as well as income generating tourism elements for visitors. This helps promote healthy lifestyles and social interaction for all ages, and helps build a community that we can all be proud of.



RECREATION

Youth recreation programs are a major part of life for many families.

Our programs and facilities provide a safe refuge and a place to play, which helps to reduce at-risk behaviors. Youth participation in parks and recreation programs has been proven repeatedly to reduce the likelihood of young people becoming victims of violent crime, smoking, drinking alcohol, or use illegal substances/drugs.

PARKS

Data received from surveys, public forums, and other community engagement opportunities, confirmed that the citizens of Rocklin are innately in tune with the many amenities and positive qualities that Rocklin parks contribute to a healthy and livable community. We are committed to Rocklin's long legacy of beautiful and abundant parks.



VOLUNTEERS

The City of Rocklin has been enriched and made stronger through countless hours of dedication by volunteers, service groups, organizations, and members of the community. The combined efforts of each of these individuals and organizations has helped establish the value parks and recreation brings in making the Rocklin community a safe and enjoyable place to live, work, and play.



HIGHLIGHTS

J
A
N
U
A
R
Y

The *Rocklin Disc Golf Shop* held a special disc golf fundraiser for a variety of charities at Johnson-Springview Park on the 13th, called "The Ice Bowl."

F
E
B
R
U
A
R
Y

125th Anniversary Celebration

We embarked on a year long effort to commemorate the City of Rocklin's 125th year.

Sunset Whitney Recreation Area -Public Forum-

On the 28th, we held the first "open house" style Public Forum for the SWRA. With around 300 attendees, the input was tremendous! The forum was also available online for those who were unable to attend.

M
A
R
C
H

On March 10th, Rocklin volunteers removed several hundred feet of fence line at the front of SWRA, facing Midas, in under an hour!

A
P
R
I
L

15th annual *Run Rocklin* had over 3,000 participants and supported the Matt Redding Foundation.

On April 21st, over 200 local youth painted 2 restroom facilities, planted 200 plants, and 120 trees to replace dead/hazardous trees in the Sunset Whitney Recreation Area.

We entered into a partnership with Subaru Roseville as part of their Terracycle Program.

Georgia Satellites, one of the most ferocious bands of the 1980's kicked off our 2018 concert season at Quarry Park.

HIGHLIGHTS

M
A
Y

Rocklin Community Festival & Parade, held May 10th -13th at Johnson-Springview Park, is a family fun event with carnival rides & games. In honor of Rocklin's 125th anniversary, a parade was held with multiple floats from community organizations and groups.

Placer County Rocks at the Quarry, hosted by Loomis Basin Brewing on the 11th, was a brewfest that focused on Placer Counties finest breweries and food.

RUSD Jazz Fest, an annual free event held at Quarry Park, showcased Rocklin's high school and middle school jazz students.

The first *Gather* kicked off our summer season at Whitney Park on the 18th with plenty of food options, artisan vendors, and more. A new flair was added to our food truck community event by including movies to the evening portion of the event. We showed "Kicking and Screaming."

Meyer's Quarry Commemorative Plaque
A plaque was placed at the entrance of the Rocklin Library commemorating the Meyer's quarry. Donated by Ruhkala Elementary School's third grade class.

J
U
N
E

In partnership with the *Sacramento Preparatory Music Academy*, a benefit concert was held to raise money for music education in underfunded schools. *The Beatles Sgt. Peppers & Revolver Albums* were performed live in their entirety to an enthusiastic audience.

Shakespeare in the Park, hosted by Take Note Troupe, was held at Quarry Park from the 7th-9th and completed their 3rd year showcasing "The Tempest."

The second *Gather* was held at Peter Hill Heritage Park on the 22nd. Rocklin Historical Society held tours of St. Mary's Chapel and the replica Firehouse while children enjoyed "The Emoji Movie."

A fun, family concert, *Rock the Quarry* held on the 23rd, showcased musical tributes to Toto, Styx, and Journey.

The annual *Celebrate America* was held at Twin Oaks Community Park at the end of the month with a fantastic display of fireworks to honor our country.

Johnson-Springview Splash Pad City Council approved the award of a design contract for the splash pad. Grand Opening is anticipated Summer, 2019!

J
U
L
Y

The third *Gather* of the season was on the 13th at Kathy Lund Community Park and showcased "Peter Rabbit."

In partnership with Skip's Music, *Stairway to Stardom*, an educational music program for young, non-professional musicians performed at Quarry Park on the 29th.

Parks and Recreation Month
This year to engage residents and bring awareness to our parks, staff decided to highlight one of the many things that make Rocklin parks special - our parks staff. We began a "Meet Your Parks Staff" campaign to get to know them and why this work is important to them.

HIGHLIGHTS

AUGUST

The fourth *Gather* was on a cool summer night at Twin Oaks Park with oversized lawn games, a lounge area, and showed "Coco."

Backpack Giveaway is an annual school supply giveaway presented by Destiny Community Center held at Johnson- Springview Park. K-8th grade students in our community received free backpacks full of school supplies.

Double Platinum recording artist *Foghat* performed at Quarry Park on the 11th with special guests the Vagabond Brothers.

Homestead, held at Quarry Park on the 19th and hosted by Eat Farm to Fork, featured local music, beer, wine and a vendor fair. Performances included Devin Dawson, Arden Park Roots and Joy & Madness.

Woofstock was held at Johnson-Springview Park on the 26th, this free, family-friendly event is where you and your pooch can rock out. Event included Costume Pawrade, Pawcake breakfast, the Grateful Dog Rescue Run, and activities for all!

National Night Out
An annual event that provides an opportunity for Rocklin Police and other city departments to reconnect with the community in a fun, interactive and welcoming atmosphere. Most of which are hosted in Rocklin Parks!

SEPTEMBER

American bandstand Rock & Roll artist, *Frankie Avalon*, brought a nostalgic feel with his performance at Quarry Park on the 8th.

Patriot Day is an annual event at Quarry Park presented by the Rocklin Police Department and their volunteer and safety foundation honoring those who serve our community and country.

Hot Chili & Cool Cars is a free annual event presented by the Rocklin Chamber of Commerce on the 15th. This event features the area's coolest cars and fiercest chili cooks, all competing for bragging rights in the Classic Car show and Chili Cook-off.

Presentations

- Our staff provided a presentation on the importance of park stewardship to two Sunset Ranch Elementary 2nd grade classes.
- Rocklin also hosted a regional event for the Municipal Management Association of Northern California highlighting Quarry Park as a public/private partnership and a source of new energy for the downtown area.

The "*Off the Rails*" Public Art unveiling was held in conjunction with the final *Gather* of the season at Quarry Park on the 21st. It was an exciting time for artists and attendees alike to witness the beautiful art pieces that will be displayed throughout the Quarry District. The evening ended with a viewing of "A Wrinkle in Time."

HIGHLIGHTS

OCTOBER

In its 4th year, the *Rocklin Mini Maker Faire* continued to share the joy of making with folks of all ages. Held at Sierra College on the 6th, this event brought out over 8,000 people in attendance.

On the 13th, Bella Vista Cross Country Coach, Tom Laythe, hosted a *Pacific Northwest College Cross Country meet* at Johnson-Springview Park. The event drew close to 1000 attendees and spotlighted our park for schools throughout California, Washington, and Oregon.

National Art and Humanities Month

We celebrate the important role that the arts and humanities have played in shaping our cities, states and country.

NOVEMBER

The *Sunset Run*, held on the 3rd, was the public's first opportunity to receive a sneak peak of the Sunset Whitney Recreation Area and helped fundraise for a new water fountain on the property.

Volunteerism

In November, volunteers planted over 40 trees within Pleasant Valley Creek Park and helped spread engineered wood fiber throughout the large and small dog parks.

DECEMBER

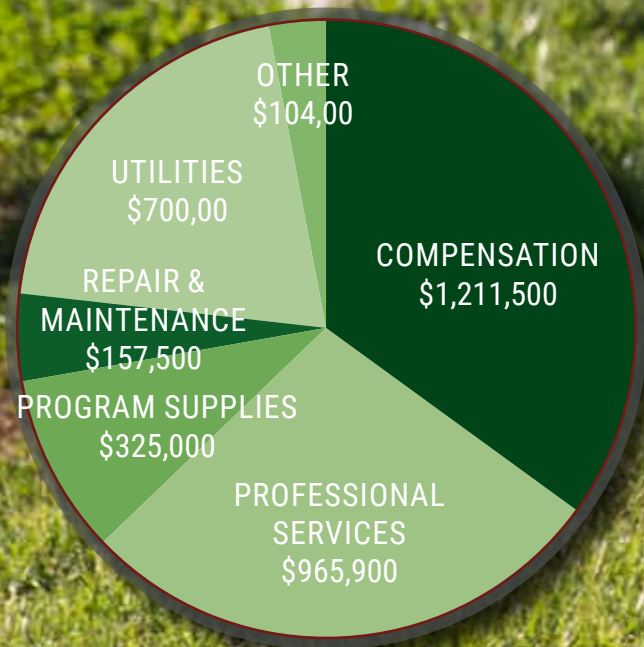
Rocklin Tree Lighting was a free family event full of vendors and youth performers, while sharing the holiday season with the entire community on the 1st.

Breakfast with Santa is a fun event for the entire family that was held at the Rocklin Event Center on the 15th. This event featured a yummy breakfast, crafts, and family photos taken with our guest of honor, Santa Claus!

Christmas Tree Recycling was held at Twin Oaks Park and Johnson-Springview Park from December 26th, 2018 - January 8th, 2019.

BUDGETS

PARKS: FUNDING & EXPENSES

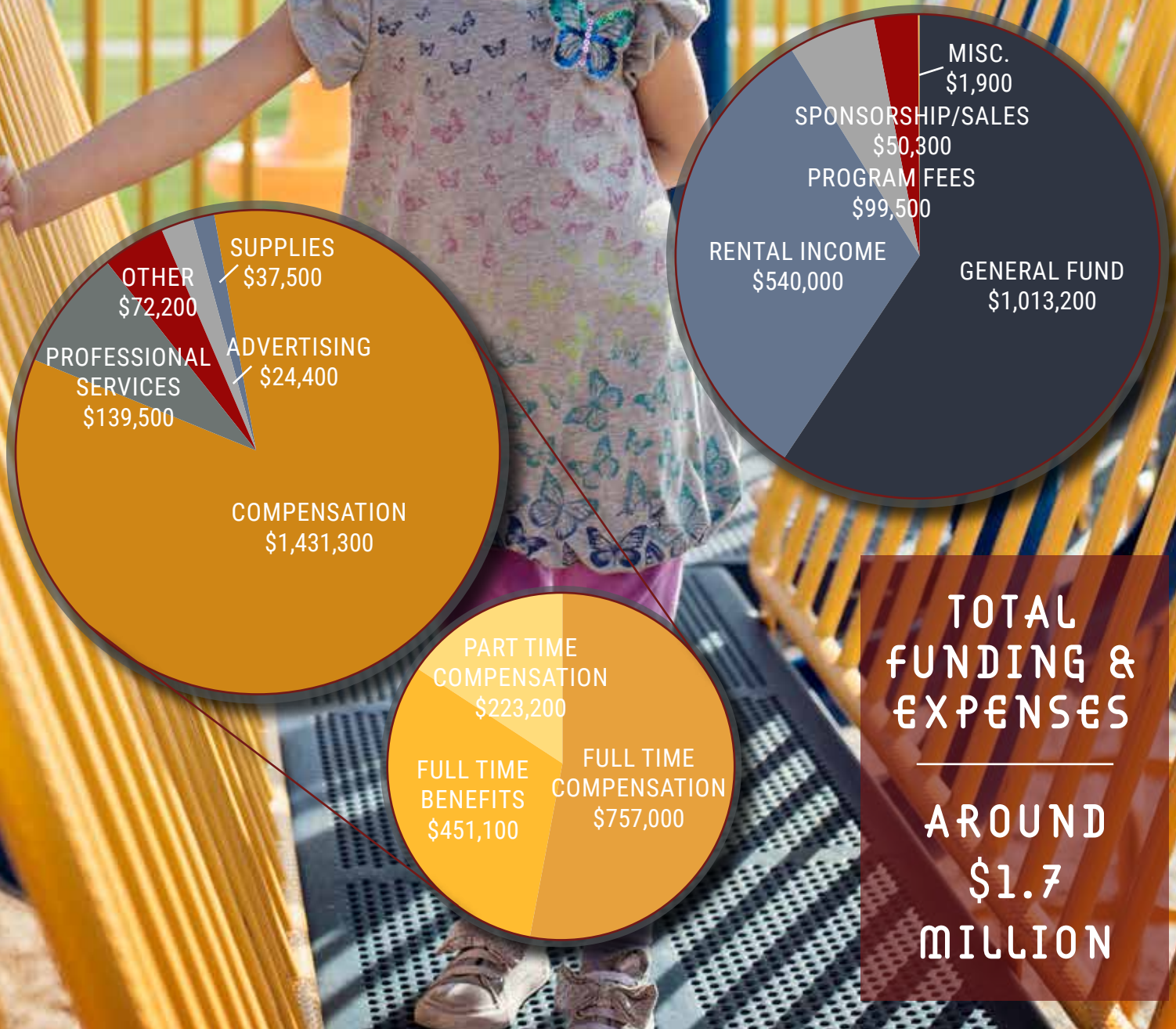


**TOTAL
FUNDING &
EXPENSES**

**AROUND
\$3.4
MILLION**

BUDGETS

RECREATION: FUNDING & EXPENSES



ARTS

The Public Art Master Plan was approved by Rocklin City Council in 2016, recommending the creation of the Art Task Force. The Art Task Force was created in 2017-2018, and launched its first major Public Art Project in 2018 with "Off The Rails."



OFF THE RAILS

A Public Art Project

OFF THE RAILS

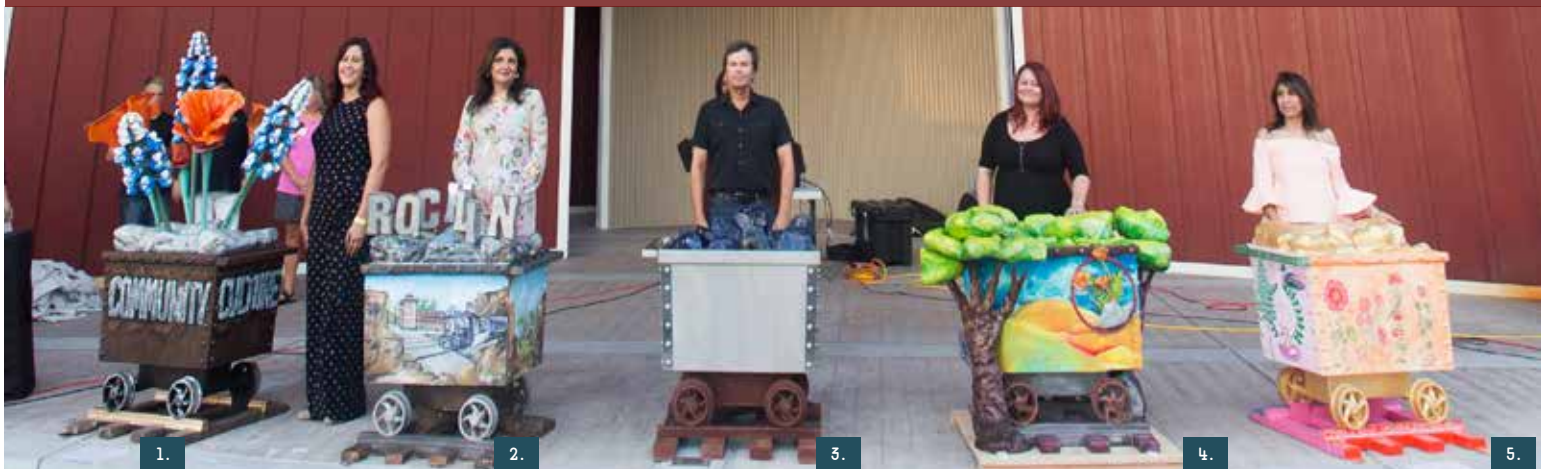
In Celebration of the City of Rocklin's 125th Birthday, the Art Task Force created a project that honored Rocklin's roots and looked to the City's future.

In the heart of Rocklin lives the Quarry District. This unique district is generally defined as the "old part" of Rocklin. According to the Sacramento Union, on March 28th, 1864 the Central Pacific's first paid freight was three mine cart loads of granite from Rocklin for a building project in San Francisco. This became the start of Rocklin's granite being distributed to help build many historical projects such as the State Capital in 1871.

Artists were invited to transform fiber glass mining carts into works of art that reflect what artists felt are important to Rocklin's past, present and future. We received over 25 entries, with some artists submitting more than one.

The Art Task Force presented the top nine designs to the Parks & Recreation Commission on May 9th. Five artists were selected and funded to create their works of art. The remaining four designs will be created in 2019.

These creative Rocklin mining carts were unveiled in September and will be displayed throughout the Quarry District in 2019.



LEFT TO RIGHT: (1) "ROOTED IN ROCKLIN" BY ROBIN GAIL KING, (2) "ROCK SOLID ROCKLIN!" BY RITU ATWAL, (3) "TRANSITION" BY SCOTT PARENTEAU, (4) "CALI KALEIDOSCOPES" BY KAREN FEILING & (5) "FOUR SEASONS" BY SIMMI CHOPRA LALL.

PARKS

ENVIRONMENTAL PRESERVATION

To maintain a high quality of life and safety for our community and create forward thinking solutions, the Parks division has implemented a multitude of different programs and projects to focus on preserving our parks, open space, and city as a whole.

VOLUNTEER PROJECT

Through a variety of opportunities, citizens can give back to their community by volunteering.

For example, in April, over 200 local youths arrived at the Sunset Whitney Recreation Area ready to plant 120 trees, 200 plants, and paint 2 restroom facilities.

ACCESS ROCKLIN

Although the implementation of this app began in the Parks division, it is used citywide. Citizens can take a photo of an issue, drop a pin on their location, and the app will route their concerns to the appropriate department.

This is just one example of how we are streamlining our services.

TERRACYCLE PROGRAM

In partnership with Subaru Roseville's Terracycle Program, recyclable items, such as snack wrappers, were collected and will be converted or "upcycled" into a bench or trash can for a Rocklin park.

CHRISTMAS TREE RECYCLING

We offer an easy and convenient way for citizens to recycle their trees after the holiday season is over by dropping them off at one of two locations, all for free! This program converts the trees into mulch which is used in city landscapes.



PARKS

SUNSET WHITNEY RECREATION AREA

After the purchase of the former Rocklin Golf Course in December of 2017, the Parks, Recreation, and Arts Commission agreed on the name “Sunset Whitney Recreation Area.” The phrase “Recreation Area” differentiates this space from a traditional park in that it indicates an outdoor area offering activities which utilize the natural features of the land such as hiking, biking, and more with minimal developed amenities. This term was also preferred over “open space” which typically indicates limitations on the accessibility and use of the land.



After hosting public forums and multiple surveys from the public, the Parks division along with the Parks, Recreation, and Arts Commission, is working on creating a master plan for the use of the space. There are many elements to consider before the property becomes fully operational and open to the public. Some of these considerations include funding sources, staffing needs, ongoing maintenance, repairs and replacements, public safety, and environmental impacts to name a few.

PARKS

MAINTENANCE

Rocklin's Parks and Recreation department is responsible for the maintenance of park space and open areas, landscapes surrounding city buildings, maintenance of city owned quarries and the safe coordination of many events held annually on city property such as fun runs, concerts, fairs, and other events intended to draw the community toward our park space. In order to sustain our parks as a safe space for the public to enjoy, many behind the scenes activities must take place. Many of these have their own tailored approach to ensure the safety of our community.



SOME OF THE MOST COMMON DUTIES INCLUDE:

- Turf care
- Fertilization of turf, trees, or shrubs
- Irrigation
- Disease & insect control
- Hardscape surfaces (*such as sweeping or power washing of walkways, parking lots, etc.*)
- Repair & maintenance to facilities, equipment, or amenities
- Inspection of park facilities, playgrounds, equipment, or other amenities to ensure compliance, safety, and proper operation
- Restroom cleaning & restocking of supplies
- Litter removal
- Special projects such as construction or maintenance of City-owned facilities

BY THE NUMBERS

594
ACRES OF PARK

8.76
ACRES OF PARK PER 1,000 RESIDENTS*

750
ACRES OF OPEN SPACE

20.08
ACRES OF OPEN SPACE PER 1,000 RESIDENTS*

*From the city's general plan, guidelines are to maintain a minimum of 5 acres of parkland per 1,000 residents

29 NEIGHBORHOOD PARKS
7 COMMUNITY PARKS
5 FUTURE PARKS
600+ ACRES OF CURRENT &
PLANNED RECREATIONAL
SPACE

5.1 MILLION SQ. FT. OF
TURF
1.3 MILLION SQ. FT. OF
PLANTER AREAS
250+ PICNIC TABLES

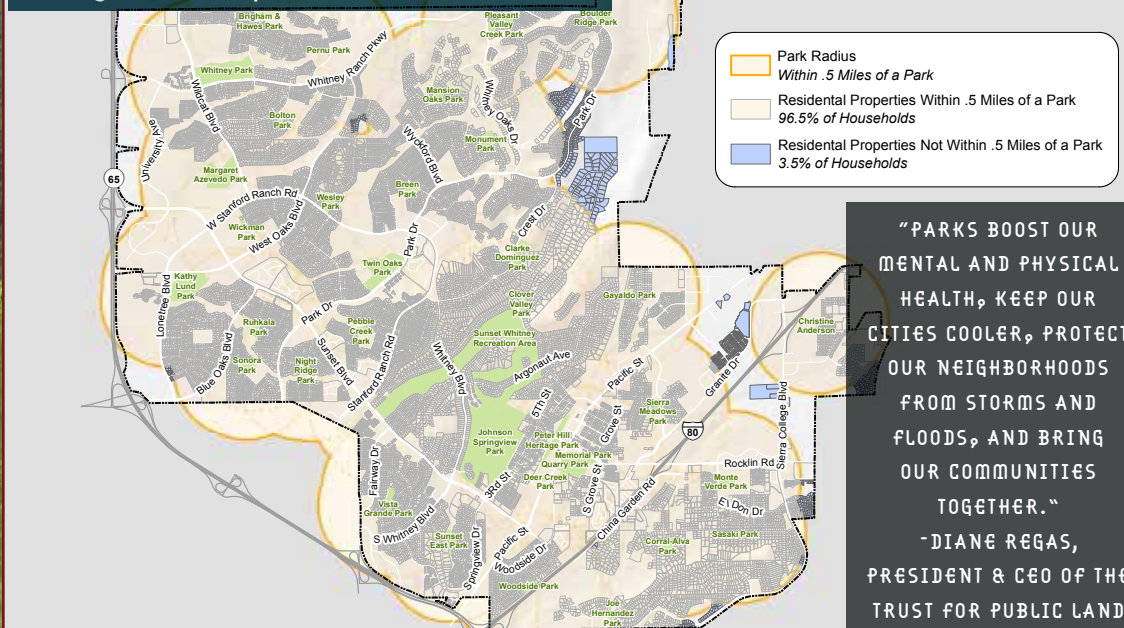
343 TRASH CANS
47 DRINKING FOUNTAINS
46 PLAY STRUCTURES
36 SPORTS FIELDS
19 COURTS
81 BARBEQUES

"WE HAVE THE MOST
AMAZING PARKS FOR
A CITY OF OUR SIZE.
THANK YOU TO THE
ENTIRE CREW WHO
MANAGES THEM FOR
OUR ENJOYMENT."

- ROBYN BUZZ

Rocklin's population as of
January 2018 was 64,417
citizens, a 4.45% increase
over last year. This makes
Rocklin the fourth fastest-
growing population of
any city in California, by
annual percentage.

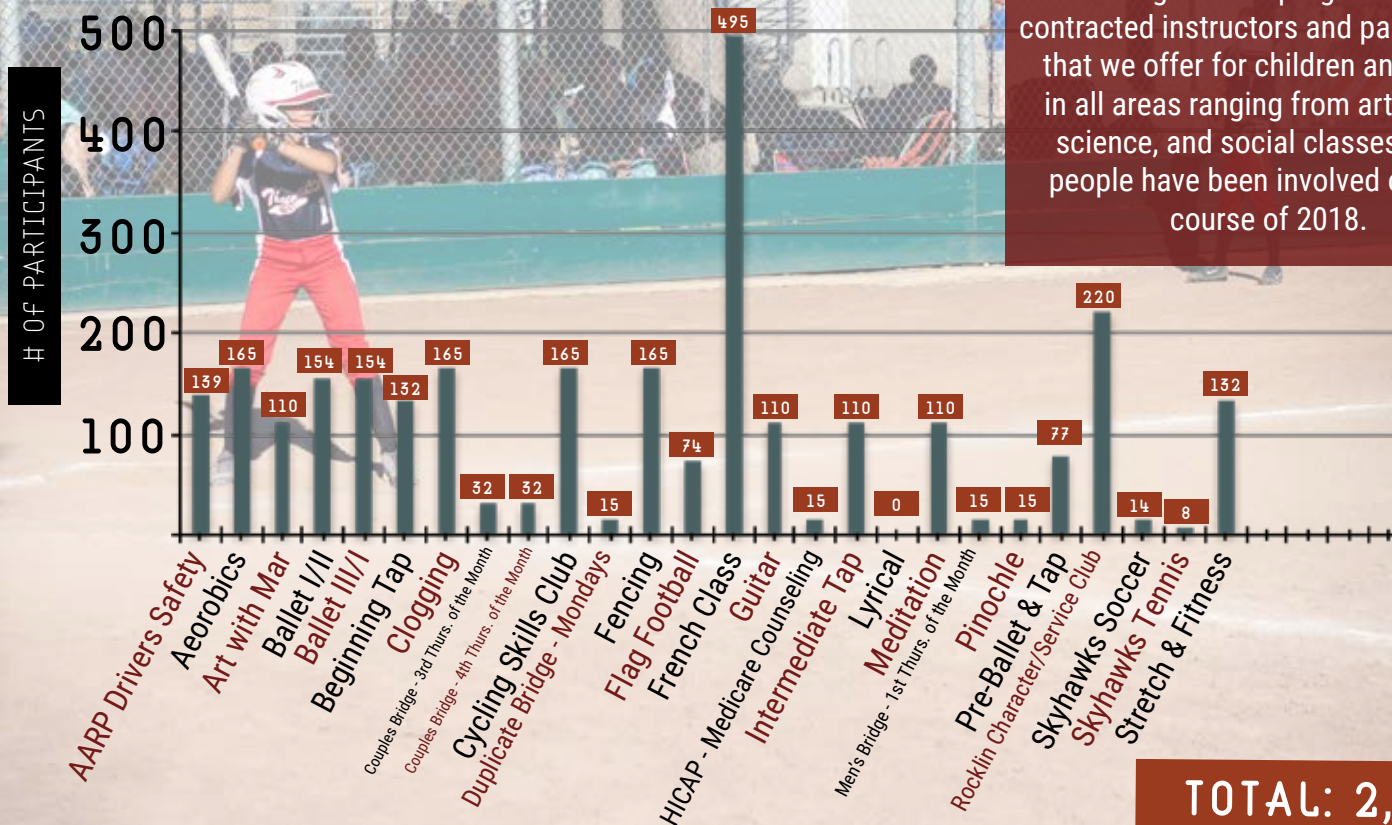
Walking/Radius Map



"PARKS BOOST OUR
MENTAL AND PHYSICAL
HEALTH, KEEP OUR
CITIES COOLER, PROTECT
OUR NEIGHBORHOODS
FROM STORMS AND
FLOODS, AND BRING
OUR COMMUNITIES
TOGETHER."

-DIANE REGAS,
PRESIDENT & CEO OF THE
TRUST FOR PUBLIC LAND

RECREATION PROGRAMS



Through our 26 programs with contracted instructors and partnerships that we offer for children and adults in all areas ranging from art, sports, science, and social classes, 2,800 people have been involved over the course of 2018.

PARTNERSHIPS

Over the past few years, Recreation has contracted with regional sports organizations to offer high quality programs for our youths and adults. National Academy of Athletics, Skyhawks, and USA Softball for Adult Softball are three successful partnerships that will continue on in 2019.

The City of Rocklin has special agreements with our local rec & competitive sports leagues that helps provide additional programs to our residents.

REC & COMPETITIVE SPORTS LEAGUES

- ROCKLIN PONY BASEBALL • TRI CITY LITTLE LEAGUE
- ROCKLIN LITTLE LEAGUE • ROCKLIN GIRLS FAST PITCH SOFTBALL
- ROCKLIN JR. THUNDER FOOTBALL
- WHITNEY JR. WILDCATS FOOTBALL • ROCKLIN YOUTH SOCCER CLUB

ROCKLIN SWIM TEAM

- 5 DIFFERENT SWIM TEAMS THROUGHOUT THE YEAR • 487 PARTICIPANTS

- SPRING AND SUMMER LESSONS OFFERED ALONG WITH AN ADAPTIVE PROGRAM • 907 PARTICIPANTS

Rocklin
SWIM TEAM

- 1 TRAINING COURSE • 16 PARTICIPANTS



THERE WERE OVER 10,000 KIDS THAT PARTICIPATED IN ALL ROCKLIN YOUTH SPORTS LEAGUES!

SPECIAL EVENTS

WOOFSTOCK

SUNDAY, AUGUST 26

JOHNSON-SPRINGVIEW PARK



Rocklin Woofstock is an annual event full of groovy activities for you and your pooch! The festival helps raise money for local canine rescue groups as well as the Rocklin dog park.



ATTENDANCE

6,000+

VENDORS

100+ INCLUDE DOG
RESCUE GROUPS,
NON-PROFITS, AND DOG
FOCUSED BUSINESSES

Rocklin Mini Maker Faire®

SATURDAY, OCTOBER 6

SIERRA COLLEGE



Maker Faire is a gathering of fascinating, curious people who enjoy learning and who love sharing what they can do. From engineers to artists to scientists to crafters, Maker Faire is a venue for these “makers” to show hobbies, experiments, and projects. This event has put Rocklin on the international map as this licensed event happens in over 38 countries around the world!



ATTENDANCE

8,000+

VENDORS

100+ WITH MORE THAN
50% BEING LOCAL &
REGIONAL MAKERS &
EDUCATORS

gather

MOVIE IN THE PARK

FRIDAY | MAY 18, JUNE 22, JULY 13,
AUGUST 3, SEPT. 21

WHITNEY PARK, PETER HILL HERITAGE PARK,
KATHY LUND COMMUNITY PARK,
TWIN OAKS PARK & QUARRY PARK



The community came together to experience great food, music, and enjoy a movie in the evening in a comfortable atmosphere under the warm California sun!



ATTENDANCE

500+ PER

10+ PER WITH THE EVENT
FOCUSING ON HIGH QUALITY
FOOD VENDORS, ARTISAN
CRAFTS, AND YOUTH
FOCUSED ACTIVITIES

VENDORS

Sunset Run

SUNSET WHITNEY RECREATION AREA

SATURDAY, NOVEMBER 3

SUNSET WHITNEY
RECREATION AREA

In conjunction with the Run Rocklin Series, Parks & Rec brought a new run to town last fall. This unique early evening run/walk event was hosted on the former Rocklin Golf Course as a first look and fundraiser to help open the property to the public. This was the public's first time being able to view, tour, and run the trails at SWRA.



ATTENDANCE

700+

VENDORS

10+ FOOD VENDORS
AND HEALTH CONSCIOUS
BUSINESSES

QUARRY PARK AMPHITHEATRE

Quarry Park is a central gathering place and picturesque setting for community events, concerts, quiet walks through nature, and active play. Quarry Park is home to an adventure park, amphitheater, trails, open space, and wildlife.

WHEN

24-FEB

28-APR

11-MAY

12-MAY

2-JUN

7-JUN

10-JUN

16-JUN

23-JUN

28-JUL

29-JUL

11-AUG

19-AUG

8-SEP

9-SEP

15-SEP

29-SEP

13-OCT

1-DEC

EVENT

125TH ANNIVERSARY CELEBRATION

GEORGIA SATELLITES WITH ALASTAIR GREENE

PLACER COUNTY ROCKS BREWFEST

ROCKLIN UNIFIED JAZZ FESTIVAL

THE BEATLES SGT. PEPPER'S LONELY HEARTS CLUB BAND & REVOLVER

SHAKESPEARE IN THE PARK

THAT DAMN GRILL OFF

GARRATT WILKIN & THE PARROTHEAD

ROCK THE QUARRY WITH TRIBUTES TO STYX, JOURNEY, AND TOTO

MOTOWN REVIEW

STAIRWAY TO STARDOM

FOGHAT

HOMESTEAD

FRANKIE AVALON

PATRIOT DAY

HOT CHILI & COOL CARS

STARLIGHT SOIREE

DIWALI

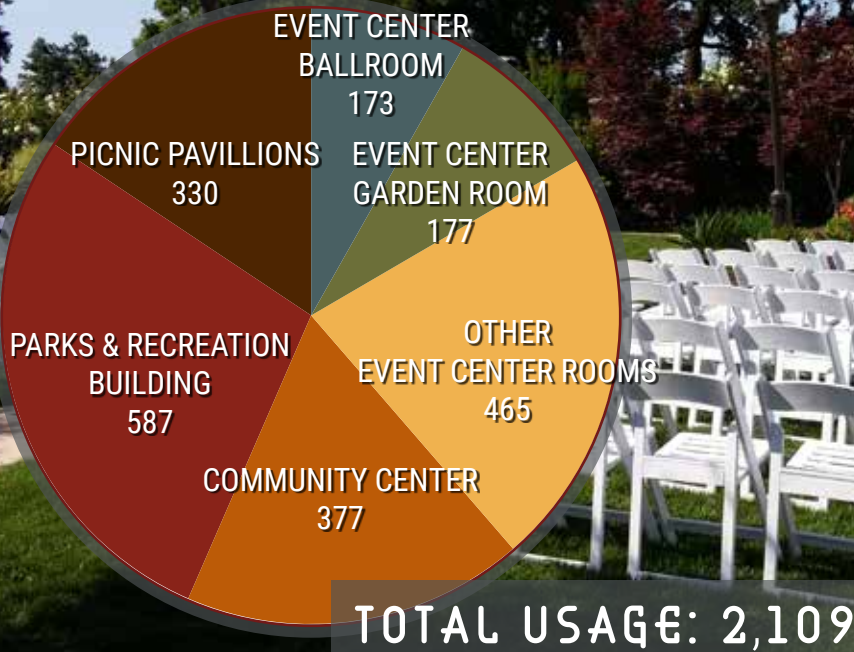
HOLIDAY TREE LIGHTING

OVERALL QUARRY PARK ATTENDANCE: 34,000

FROM ALL OF THE EVENTS, WHETHER ORGANIZED BY THE CITY OF ROCKLIN OR IN PARTNERSHIP WITH THE CITY, SPECIAL EVENTS HAVE SERVED OVER 100,000 PEOPLE IN 2018!

VENUE RENTALS

The Parks and Recreation Department handles reservations and rentals for all of the City of Rocklin facilities. The chart below lists the venues, the types of events held and the number of bookings for each. In 2018, 2,109 reservations and events were held at these venues.



"I JUST HAD MY WEDDING HERE AND LOVED IT! THE GARDEN IS BEAUTIFUL AND HAS A FEW OPTIONS FOR A CEREMONY SITE, AND THE ADJOINING GARDEN ROOM WAS PERFECT FOR OUR UNDER-50 PEOPLE RECEPTION... OVERALL, I THINK IT'S A GREAT VENUE FOR WEDDINGS IN THE SACRAMENTO AREA IF YOU WANT SOMETHING OTHER THAN A BARN OR VINEYARD."
-KRISTINA V.

"THE ROCKLIN EVENT CENTER WORKED PERFECT FOR OUR EARLY JUNE WEDDING. WE FOUND THIS HIDDEN GEM BY CHANCE AND SO GLAD WE DID!!!! HAVING BOTH THE CEREMONY AND RECEPTION ON SITE MADE IT EASY FOR US AND OUR GUEST. THE GAZEBO WAS GORGEOUS. THE ON SITE STAFF ON THE DAY OF WERE ABSOLUTELY HELPFUL..."
- JILL D.

BY TYPE:

