

STATION DESCRIPTION & SKETCH

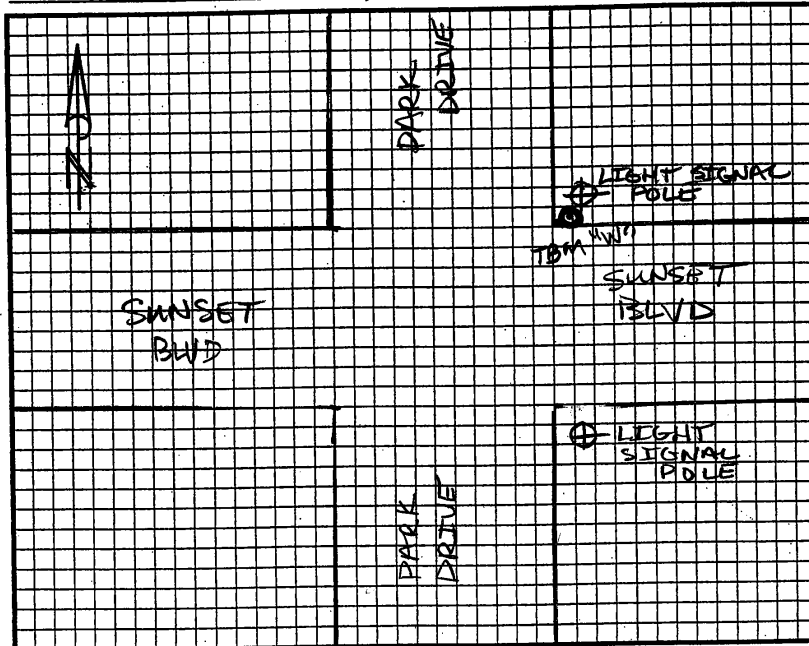
JN 11559-00 - Project Name: CITY OF ROCKLIN CONTROL NETWORK

QUADRANGLE NAME: _____ STATION NAME: TT3M "W" (R9-8)

Approximate Latitude: 38° 48' 16.89" N Approximate Longitude: 121° 16' 21.14" W

Described by: PETE BALDO Date: 4/2/03

To reach the point HWY 65 TO SUNSET BLVD EAST GO
(HOR-) 3 MILES TO PARK DRIVE AT INTX SUNSET BLVD
AND PARK DRIVE LOCATED IN NORTH EAST QUADRANT
OF INTX.



The point is marked by BOLT IN SIGNAL POLE and is .30 ABOVE the ground.
BM IS NORTH WEST BOLT OF BASE OF LIGHT SIGNAL POLE.
IN NORTHEAST QUADRANT OF INTX.

