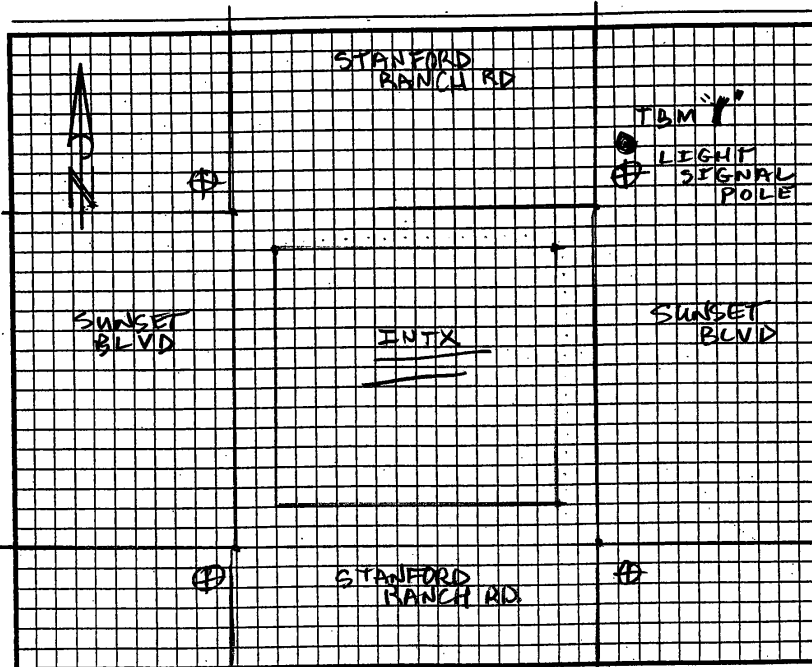


**STATION DESCRIPTION & SKETCH**

JN 11559-00 - Project Name: CITY OF ROCKLIN CONTROL NETWORK  
 QUADRANGLE NAME: 38° 47' 46.13" N STATION NAME: TBM 1" (R 9-7)  
 Approximate Latitude: 38° 47' 46.13" N Approximate Longitude: 121° 15' 53.05" W  
 Described by: PETER BARDO Date: 4/2/03

To reach the point TAKE HWY 65 TO STANFORD RANCH EXIT.  
STANFORD RANCH EAST TO INTX OF STANFORD RANCH RD.  
AND SUNSET BLVD. PT. LOCATED IN NORTHEAST QUADRANT  
OF INTX. PT IS BOLT ON BASE LIGHT SIGNAL POLE.



The point is marked by LARGE BOLT AT BASE and is the ground  
OF TRAFFIC SIGNAL POLE THE BOLT IS .58 ABOVE SURFACE  
NORTHEAST BOLT OF NORTHEAST LIGHT SIGNAL POLE OF  
INTX SUNSET BLVD AND STANFORD RANCH RD.

