

# ANDREGG, INC.

SURVEYING • MAPPING • GEOMATICS

## STATION DESCRIPTION & SKETCH

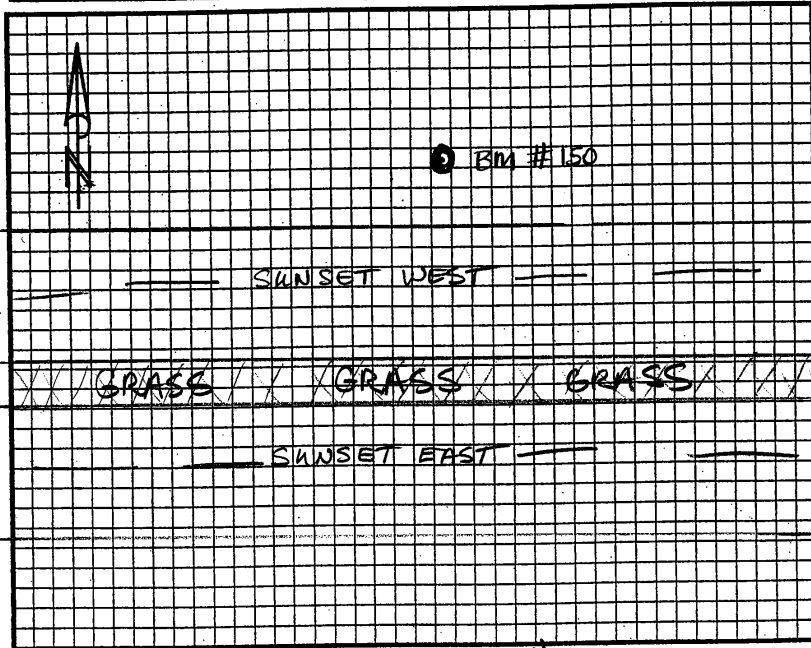
JN 11559-00 - Project Name: CITY OF ROCKLIN CONTROL NETWORK

QUADRANGLE NAME: ROSEVILLE STATION NAME: RM 150 (R913)

Approximate Latitude: 38° 43' 02.46" N Approximate Longitude: 121° 17' 41.21" W

Described by: PETE BAUDO Date: 4/02/03

To reach the point HWY 65 TO INTX SUNSET AND 65  
GO EAST ON SUNSET .28 MILE PT. IS ON NORTH  
SIDE OF WESTBOUND SUNSET BLVD.



The point is marked by 1 1/2" BRASS DISK <sup>SET IN</sup> CONCRETE and is FLUSH W/ the ground.

COUNTY BENCH MARK HV1. PT IS 10 FT.  
NORTH OF NORTHER SUNSETWEST. PT. 0.15 MILES WEST OF  
INTX SUNSET AND ATHONTON. .28 MILE EAST OF  
HWY 65 INTX SUNSET.