

ANDREGG, INC.

SURVEYING • MAPPING • GEOMATICS

220 H-4

STATION DESCRIPTION & SKETCH

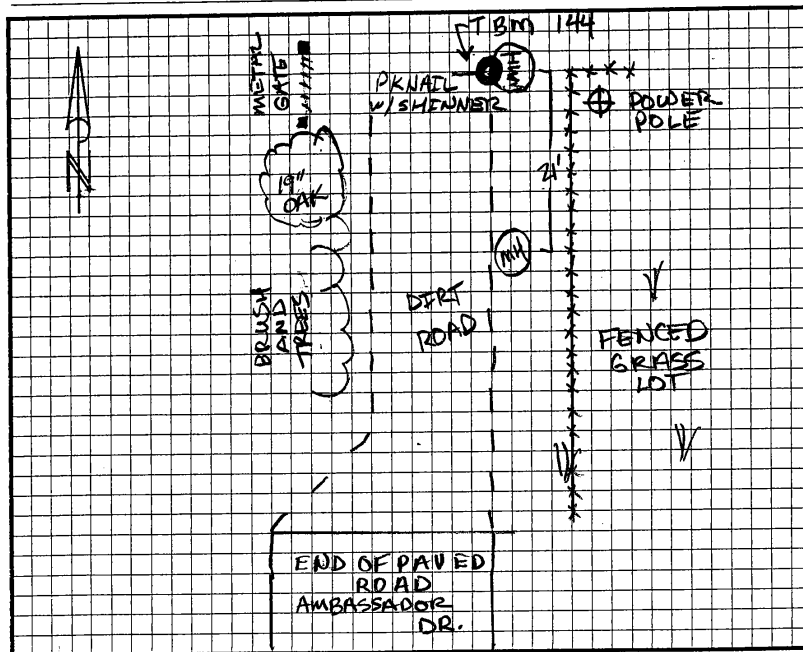
JN 11559-00 - Project Name: CITY OF ROCKLIN CONTROL NETWORK

QUADRANGLE NAME: Rocklin STATION NAME: TBM 144 (R12-1)

Approximate Latitude: 38°-47'-07.48" N Approximate Longitude: 121°-12'-29.92" W

Described by: PETER BALDO Date: 4/2/03

To reach the point TAKE SIERRA COLLEGE BLVD. SOUTH TURN RIGHT ON EL DON DRIVE THEN RIGHT ON AMBASSADOR DR. TO END OF PAVEMENT. LOOK FOR SEWER CARSONITE PADDLES.



The point is marked by PK NAIL W/ SHINNER and is SET FLUSH the ground w/ CONCRETE MAN HOLE (SEWER) THERE ARE TWO SS.MH. THE TBM IS ON WEST RIM OF NORTH SS.MH. 72 FT NORTH OF END OF PAVEMENT AMBASSADOR DR. PT. IS 20 FT. SOUTH OF 10" OAK. PT. IS 10 FT. WEST OF POWER POLE W/ TRANSFORMER AND 24 FT. EAST OF METAL GATE.

andregg@andregg.com

LAT 38° 54' 13" N / LONG 121° 04' 59" W

299 NEVADA STREET, AUBURN, CA 95603-4617, U.S.A. • 530-885-7072 • 800-400-7072 • FAX 530-885-5798