

220 E-4

ANDREGG, INC.

SURVEYING • MAPPING • GEOMATICS

STATION DESCRIPTION & SKETCH

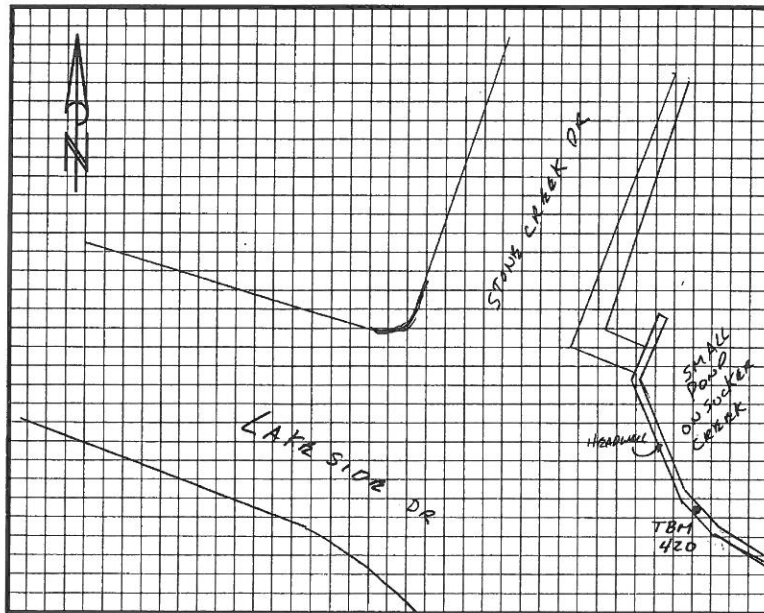
JN 11559-00 Project Name: City of Rocklin Control Network

QUADRANGLE NAME: Rocklin STATION NAME: 420 (R3-8)

Approximate Latitude: 38°47'07.77" Approximate Longitude: 121°13'47.09"

Described by: W. W. CSON Date: 12-02-02

To reach the point FROM INTERSECTION OF LAKE SIDE DR. STONE CREEK DR.
EAST TO HEADWALL ON SMALL POND ON SUGAR CREEK & MONUMENT
IN TOP OF HEADWALL



The point is marked by RK ANDREGG, INC WASHBR and is 05' ± ABOVE the ground.

