



AGENDA

REGULAR MEETINGS OF THE PARKS, RECREATION AND ARTS COMMISSION

July 11, 2018

TIME: 6:00 PM

PLACE: City of Rocklin Council Chambers

www.rocklin.ca.us

MANNER OF ADDRESSING THE COMMISSION

Citizens may address the Commission on any item on the agenda at the time the item is considered. Citizens wishing to speak may request recognition from the Chairperson by raising their hand and stepping to the lectern when requested to do so. Speakers will usually be allowed five (5) minutes; however, the Chairperson may set shorter time limits. Speakers are asked to identify themselves by stating their name and the city they reside in for the official record.

STANDARDS OF DECORUM

Any person who disrupts the meeting of the Commission, may be barred by the presiding commissioner from further audience before the Commission during that meeting, unless permission to continue be granted by majority vote of the Commission.

All remarks shall be addressed to the Commission as a body and not to any member thereof, or to staff, or to the public. No person, other than a member of the Commission, and the person having the floor, shall be permitted to enter into any discussion without the permission of the presiding commissioner.

For items not on the agenda, and for non-hearing items on the agenda the person addressing the Commission shall be limited to five minutes, unless the time is adjusted by the presiding commissioner.

Whenever any group of persons wishes to address the Commission on the same subject matter, it shall be proper for the presiding commissioner to request that a spokesman be chosen by the group to address the Commission and, in case additional matters are to be presented at the time by any member of the group, to limit the number of persons so addressing the Commission, so as to avoid unnecessary repetition.

As a courtesy to all, please turn off cell phones and other electronic devices during the meeting.

WRITINGS RECEIVED AFTER AGENDA POSTING

Any writing related to an agenda item for the open session of this meeting distributed to the Parks, Recreation and Arts Commission less than 72 hours before this meeting is available for inspection at City Hall, 3970 Rocklin Road, Rocklin, during normal business hours. These writings will also be available for review at the Parks and Recreation Department Building located at 5460 5th Street, Rocklin. If you have questions related to this agenda, please call 916-625-5200.

AMERICANS WITH DISABILITIES ACT

In compliance with the Americans with Disabilities Act, the City of Rocklin encourages those with disabilities to participate fully in the public hearing process. If you have a special need in order to allow you to attend or participate in our public meeting and public hearing processes, including receiving notices, agendas, and other writings in appropriate alternative formats, please contact our office at (916) 625-5200 well in advance of the public meeting or public hearing you wish to attend so that we may make every reasonable effort to accommodate you.

ELECTRONIC PRESENTATIONS

All persons with electronic presentations for public meetings will be required to bring their own laptop or other form of standalone device that is HDMI or VGA compatible. It is further recommended that presenters arrive early to test their presentations. The City is not responsible for the compatibility or operation of non-city devices or the functionality of non-city presentations.

POSTING OF AGENDA

In accordance with Government Code Section 54954.2(a) this agenda was posted on the City's bulletin board at City Hall, 3970 Rocklin Road, Rocklin, and City of Rocklin website at www.rocklin.ca.us.

AGENDA

INTRODUCTION

1. **Meeting called to order at:**

2. **Pledge of Allegiance:**

3. **Roll Call:**
 - A. Commissioners:

 - B. City Personnel:

AGENDA REVIEW

4. **Agenda Modifications**

CONSENT CALENDAR

The following routine matters can be acted upon by one motion. Individual items may be removed by Commission for separate discussion. The title is deemed to be read and further reading waived of any ordinance listed on the Consent Calendar for introduction or adoption.

5. Minutes

- A. Minutes for June 13th, 2018 Meeting

SPECIAL PRESENTATIONS

- 6. **Presentation from City Manager**
- 7. **Presentation on Adventure Park - Marc Mondell**

CITIZENS ADDRESSING THE COMMISSION

Members of the public may address the Commission at this time on any item of business of interest to the public that is not on the agenda. Speakers are limited to five minutes unless the time is extended by the presiding commissioner. Commissioners may briefly respond to statements made or questions asked by the speaker, but may not make any decisions or take action on any item not on the agenda.

8. NAME AND CITY

REPORTS FROM CITY OFFICIALS/DICUSSION AND POTENTIAL ACTION ITEMS

- 9. **Sierra Pine Public Art**
- 10. **"Off the Rails" Update**
- 11. **SWRA Master Plan**
- 12. **Current Project Summary**
- 13. **Quarterly Venue Rentals Report**
- 14. **Directors Report**
- 15. **Park ManagersReport**

COMMISSION REPORTS

- 16. **Reports from Committees**
- 17. **Commission Comments**

FUTURE AGENDA ITEMS

ADJOURNMENT

18. Meeting Adjourned at



MINUTES
REGULAR MEETINGS OF THE
PARKS, RECREATION
AND ARTS COMMISSION

June 13, 2018

TIME: 6:00 PM

PLACE: City of Rocklin Council Chambers

www.rocklin.ca.us

MANNER OF ADDRESSING THE COMMISSION

Citizens may address the Commission on any item on the agenda at the time the item is considered. Citizens wishing to speak may request recognition from the Chairperson by raising their hand and stepping to the lectern when requested to do so. Speakers will usually be allowed five (5) minutes; however, the Chairperson may set shorter time limits. Speakers are asked to identify themselves by stating their name and the city they reside in for the official record.

STANDARDS OF DECORUM

Any person who disrupts the meeting of the Commission, may be barred by the presiding commissioner from further audience before the Commission during that meeting, unless permission to continue be granted by majority vote of the Commission.

All remarks shall be addressed to the Commission as a body and not to any member thereof, or to staff, or to the public. No person, other than a member of the Commission, and the person having the floor, shall be permitted to enter into any discussion without the permission of the presiding commissioner.

For items not on the agenda, and for non-hearing items on the agenda the person addressing the Commission shall be limited to five minutes, unless the time is adjusted by the presiding commissioner.

Whenever any group of persons wishes to address the Commission on the same subject matter, it shall be proper for the presiding commissioner to request that a spokesman be chosen by the group to address the Commission and, in case additional matters are to be presented at the time by any member of the group, to limit the number of persons so addressing the Commission, so as to avoid unnecessary repetition.

As a courtesy to all, please turn off cell phones and other electronic devices during the meeting.

WRITINGS RECEIVED AFTER AGENDA POSTING

Any writing related to an agenda item for the open session of this meeting distributed to the Parks, Recreation and Arts Commission less than 72 hours before this meeting is available for inspection at City Hall, 3970 Rocklin Road, Rocklin, during normal business hours. These writings will also be available for review at the Parks and Recreation Department Building located at 5460 5th Street, Rocklin. If you have questions related to this agenda, please call 916-625-5200.

AMERICANS WITH DISABILITIES ACT

In compliance with the Americans with Disabilities Act, the City of Rocklin encourages those with disabilities to participate fully in the public hearing process. If you have a special need in order to allow you to attend or participate in our public meeting and public hearing processes, including receiving notices, agendas, and other writings in appropriate alternative formats, please contact our office at (916) 625-5200 well in advance of the public meeting or public hearing you wish to attend so that we may make every reasonable effort to accommodate you.

ELECTRONIC PRESENTATIONS

All persons with electronic presentations for public meetings will be required to bring their own laptop or other form of standalone device that is HDMI or VGA compatible. It is further recommended that presenters arrive early to test their presentations. The City is not responsible for the compatibility or operation of non-city devices or the functionality of non-city presentations.

POSTING OF AGENDA

In accordance with Government Code Section 54954.2(a) this agenda was posted on the City's bulletin board at City Hall, 3970 Rocklin Road, Rocklin, and City of Rocklin website at www.rocklin.ca.us.

AGENDA**INTRODUCTION**

1. **Meeting called to order at:**
Meeting called to order at 6:01 PM
2. **Pledge of Allegiance:**
Pledge of Allegiance was led by Chair Stockton
3. **Roll Call:**
 - A. Commissioners:
Commissioners Anderson - Present
Commissioner Hartwell - Present
Chair Stockton - Present
Commissioner Armstrong – Bryant – Present
Youth Commisisoner Najera - Excused
 - B. City Personnel:
Director Karen Garner (Parks and Recreation)
Parks Manager Sarah Novo (Parks and Recreation)
Recreation Manager Kevin Huntzinger (Parks and Recreation)
Senior Dept. Admin. Specialist Kylene Draper (Parks and Recreation)

AGENDA REVIEW**4. Agenda Modifications****CONSENT CALENDAR**

The following routine matters can be acted upon by one motion. Individual items may be removed by Commission for separate discussion. The title is deemed to be read and further reading waived of any ordinance listed on the Consent Calendar for introduction or adoption.

5. Minutes

- A. **Minutes for April 11, 2018 Meeting**
Commissioner Hartwell motioned to approve minutes from the April 11, 2018 commission meeting. Commissioner Anderson second the motion. Motion passed 5 to 0.
- B. **Minutes for May 9, 2018 Meeting**
Commissioner Hartwell motioned to approve minutes from the May 9, 2018 commission meeting. Commissioner Armstrong-Bryant second the motion. Motion passed 5 to 0.

CITIZENS ADDRESSING THE COMMISSION

Members of the public may address the Commission at this time on any item of business of interest to the public that is not on the agenda. Speakers are limited to five minutes unless the time is extended by the presiding commissioner. Commissioners may briefly respond to statements made or questions asked by the speaker, but may not make any decisions or take action on any item not on the agenda.

6. NAME AND CITY**REPORTS FROM CITY OFFICIALS/DICUSSION AND POTENTIAL ACTION ITEMS**

- 7. **Off the Rails Update**
Kylene Draper (Parks and Recreation) gave update on public art project.
- 8. **FY 18/19 Budget Overview**
Director Karen Garner (Parks and Recreation) gave overview of the FY 18/19 Budget.
- 9. **Project Summary – Draft**
Per the request of Chair Stockton, Director Garner (Parks and Recreation) presented commission with a project summary list of projects and topics the Commission has discussed or addressed in the past year.
This item will be a standing item on future agendas for the commission.

10. Sunset Whitney Recreation Area Updates/Next Steps

Staff recommended to appoint two Commissioners to work with staff on drafting a Master Plan for Sunset Whitney Recreation Area.

Public Comment:

Jerry Mitchell suggested getting a volunteer organization together to help maintain trails, he suggested calling them "Trail Keepers".

Rodger Peterson made public comment.

Commissioner Armstrong-Bryant made a motion to appoint Commissioner Hartwell and Commissioner Anderson to the SWRA Master Plan subcommittee. Chair Stockton seconded the motion. Motion passed 4 to 0.

11. Director's Report

Director Garner gave a update on Park & Park Facilities Use.

12. Parks Manager Report

Parks Manager Sarah Novo updated Commission on the JSP Waterpark and the RUFF Dog Park.

COMMISSION REPORTS**13. Reports from Committees**

Commissioner Armstrong-Bryant reported on the Art Task Force.

Commissioner Anderson reported on the 2x2 committee with Council.

14. Commission Comments**FUTURE AGENDA ITEMS****ADJOURNMENT****15. Meeting Adjourned at**

Meeting adjourned at 7:44 PM



Parks, Recreation, and Arts Commission Report

Subject: Sierra Pine Subdivision Public Art – Item 9

Submitted by: Karen Garner, Director

Date: July 11, 2018

Department: Parks & Recreation

- **Staff Recommendation:**
 - Provide direction on Sierra Pine Public Art Proposal

BACKGROUND:

The Sierra Pine single-family, small lot subdivision project is located on the former Sierra Pine fiberboard manufacturing site near Pacific St. and Dominguez Rd. and includes the development of approximately 28.17 acres into 199 single-family residential lots. This subdivision includes a public park that also will serve as a detention basin and connection to The current owner of the project, Sierra Pine, a California Limited Partnership, has agreed to incorporate public art into the site.

The Sierra Pine project was reviewed by the Planning Commission in August 2017 and recommended approval of the project to the City Council. The Planning Commission acknowledged that review and approval of public art is a function of the Parks, Recreation and Arts Commission, but as noted in the staff report to the City Council, the Planning Commission had concerns about the location of the public art being next to the rail spur and being unsafe if people are trying to look at and read it. The Commission suggested that maybe the art could be placed somewhere else, possibly along Dominguez Road.

The City Council approved the project at their September 26, 2017 meeting. Approval of the subdivision map associated with this project included the following conditions which addressed the Planning Commission's concerns;

Public Art Installation

- a. Prior to issuance of a Certificate of Occupancy, the applicant/developer shall obtain the approval of the Recreation, Arts and Tourism Commission for the proposed public art installation adjacent to APN 045-021-045 at Dominguez Road, or approved alternative installation, and complete the installation.
- b. Improvement plans shall reflect the location of the public art as approved by the Recreation, Arts and Tourism Commission, three scenic panels on the sound wall adjacent to APN 045-021-045 at Dominguez Road in substantial conformance with Exhibit A, or an approved alternative installation.
- c. Illumination of the public art, if any, shall be mounted in-ground (flush) and/or shielded so that the light source and any glare is shielded from Dominguez Road and so that the light is projected onto the art elements only.

As outlined in the Public Art Master Plan, the Art Task Force is to make a recommendation to the Parks, Recreation, and Arts Commission for Public Art in a Private Development project such as Sierra Pine. Both the Art Task Force and Commission are to review proposals against adopted criteria. The adopted criteria checklist is attached. Choice of artist and funding of artwork are the responsibility of the developer.

At this time, Sierra Pine is requesting some initial feedback on proposed art locations and art type. This subdivision will likely be sold to a production home builder. Because of the probable change in ownership and uncertainty regarding the timing of construction, the current ownership is not proposing a specific artist or artwork at this time. They are, however, seeking initial feedback from the Commission so that the information and direction can be incorporated into final drawings and communicated to future ownership. As noted in the conditions for the project, final approval of public art will occur prior to issuance of a Certificate of Occupancy and will be reviewed per the process outlined in the Public Art Master Plan.

Attached is a lot map of the subdivision, plan drawings showing the proposed location of the art and examples of the type of art work that could be incorporated into the location.

Commission alternatives include but are not limited to;

- Confirm proposed location as a potential public art location
- Propose one or more alternative public art locations within the subdivision
- Provide general direction on the public art examples provided
- Provide general direction on other types of public art for consideration

Attachments:

- A. Public Art in Private Development Criteria Checklist
- B. Sierra Pine lot map
- C. Plan drawings proposed public art location
- D. Public art examples

Review of Public Art in a Private Development Project

Vision of the Public Art Master Plan

The City of Rocklin aspires to create a diverse artistic environment that enriches the daily life of its citizens. Public art enhances civic pride and creates a deeper interaction with the places we visit and in which we work and live. Creating a healthy art presence is a vital part of the community infrastructure and is a catalyst for economic development.

Mission of the Public Art Master Plan

The City of Rocklin is committed to providing its citizens with exceptional quality of life through public art while honoring the City's heritage and small town sense of community.

Development Project Name:	
Development Location:	
Developer:	
Date Reviewed:	
Type of Artwork/Description:	

Eligible Artwork?	Yes:	No:
<p>Eligible Artwork may include:</p> <ul style="list-style-type: none"> • Sculpture: free-standing, wall supported or suspended; kinetic, electronic; in any appropriate material or combination of materials. • Murals or portable paintings: in any appropriate material or variety of materials, with or without collage or the addition of non-traditional materials or means. • Photography, original works of graphic art, limited edition prints, works on/of paper, original paintings. • Earthworks, fiberworks, waterworks, neon, glass, mosaics, or any combination of forms of media including sound, literary elements, holographic images, or hybrids of media and new genres. • Furnishings or fixtures, including but not limited to gates, railings, streetlights or seating, if created by artists as unique elements. • Artistic or aesthetic elements of the overall architecture or landscape design if created by a professional artist or a design team that includes a professional visual artist. 	<p>Ineligible Works of Art:</p> <ul style="list-style-type: none"> • Directional elements such as supergraphics, signage or color coding except where these elements are integral parts of an overall design created by a professional visual artist • "Art objects" which are mass produced or of standard manufacture, such as playground equipment, fountains or statuary elements, unless incorporated into an artwork by a project artist • Reproductions by mechanical or other means, of original works of art • Decorative, ornamental, architectural or functional elements which are designed by the building architect, as opposed to elements created by an artist commissioned for that purpose. • Landscape architecture and landscape gardening except where these elements are designed by a professional visual artist and/or are an integral part of the artwork by the artist. • Any piece of Art that does not align with the City of Rocklin mission, vision, and values. (Profanity, politically themed, nudity, etc.) 	

General Criteria	Notes:
<p>Budget. The <u>recommended</u> budget for private development projects is 1% of the building permit value for new construction (or alteration of more than 50% of the G.S.F. of an existing structure or area), for all projects of 25,000 sq. ft. or greater.</p>	
<p>Artist. The creator of the work of art shall be a practitioner in the visual arts who is recognized as an artist of serious intent and who is not a member of the project architect or landscape architect firm.</p>	
<p>Artistic Quality. Works of art must be unique and shall include excellence in craftsmanship, originality in conception, and integrity of materials.</p>	
<p>Media. All forms of media may be considered. Works may be portable, permanently affixed, or incorporated in the design and/or function of a public space. Temporary exhibits or installations may also be considered for extended periods of time.</p>	
Site Criteria	Notes:
<p>Location. May include, but not limited to, site entries, vistas, plazas, common areas, project walls, gates, and prominent corners.</p>	
<p>Proportion. The artworks shall be proportionate with the scale of the development in terms of visibility, compatibility with the architecture and landscape, and impact on the surrounding environment.</p>	
<p>Visibility and public access. Artwork should be visible and accessible by the public.</p>	
<p>Public safety. All works of art or temporary installations shall be evaluated to ensure their compliance with public safety requirements.</p>	
<p>Traffic patterns. Location should consider traffic patterns, both pedestrian and vehicular in terms of visibility and access.</p>	
<p>Relationship. Relationship of art to the site's existing or future architectural or natural features as well as the function and use of the facility or site.</p>	

<p>Future Development. To the extent possible, future development plans for the area that may affect the public art project should be considered.</p>	
<p>Existing Art. Relationship of the proposed work to existing works of art or design elements within the site's vicinity</p>	
<p>Context. Social or cultural context of the proposed artwork relative to the site and its surrounding environment.</p>	
<p>Permanence. For permanently installed works, due consideration shall be given to the work's structural and surface soundness, and to inherent resistance to theft, vandalism, weathering, and excessive maintenance or repair costs.</p>	
<p>Artwork Management</p>	<p>Notes:</p>
<p>Ownership. If the artwork is located within a private community the property owner would own the completed artwork and would be responsible for the care, insurance, and keeping of accurate records about the piece. If the artwork is located within a public right of way the City of Rocklin would own the completed artwork and would be responsible for the care, insurance, and keeping of accurate records about the piece.</p>	
<p>Recordkeeping. The owner is responsible for keeping accurate, updated records of any public artwork they commission or acquire. Recordkeeping will include identifying the project on-site with a plaque and maintaining files on the artwork. Duplicate records will be kept on file with City of Rocklin.</p>	
<p>Maintenance. The owner is responsible for the care and repair of any public artwork they commission or acquire and should follow instructions provided by the artist.</p>	

Marc Mondell

RECOMMENDED FOR APPROVAL BY
PLANNING COMMISSION ON:

August 15, 2017

CONCEPTUAL SITE PLAN
03-27-2017

#215-0461

Sierra Pine
Redwood, CA

Lewis Operating Corporation

Architects & Planners
590 Second St., Suite 200
Oakland, CA 94607
916.222.2610
kgj.com

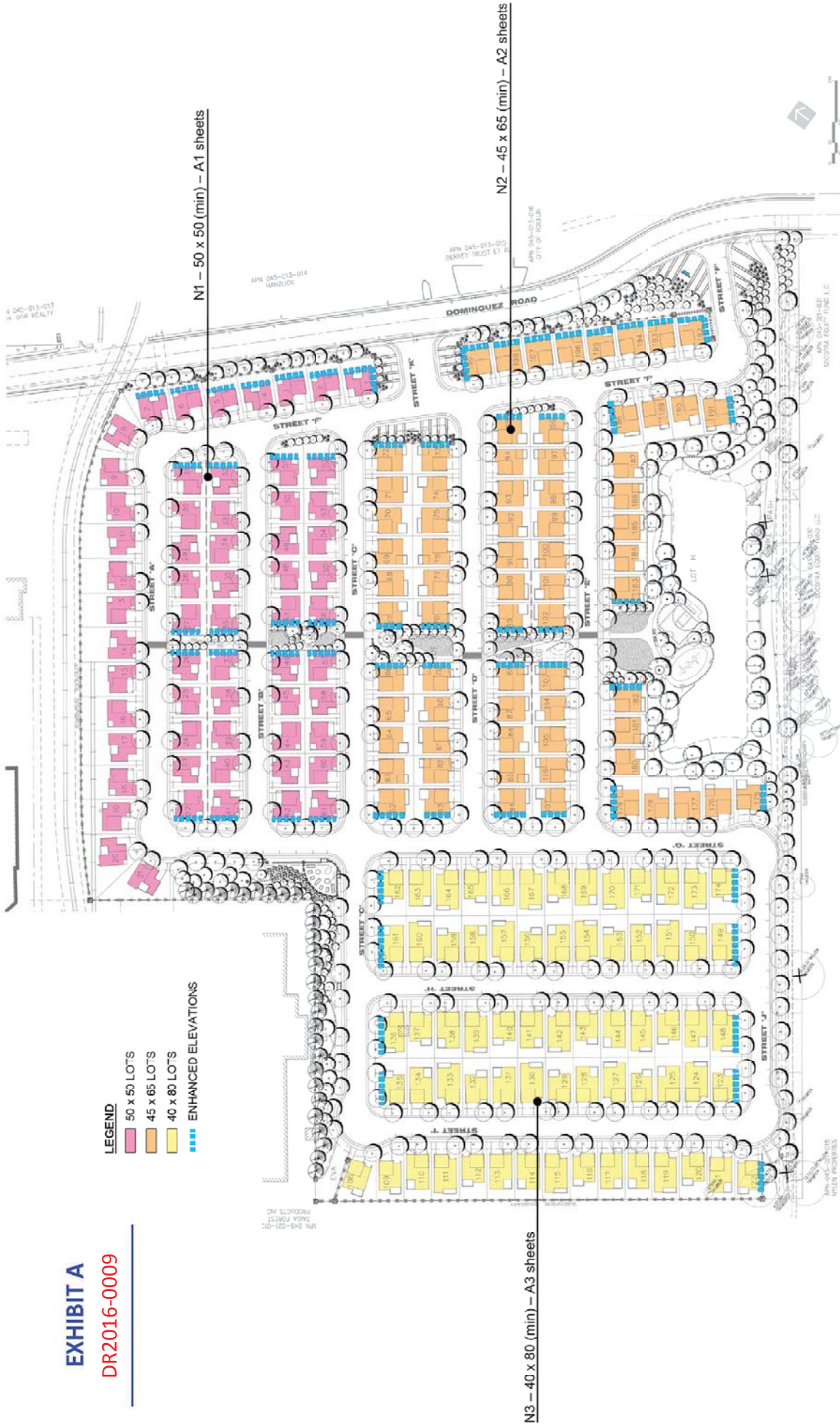


EXHIBIT A

DR2016-0009

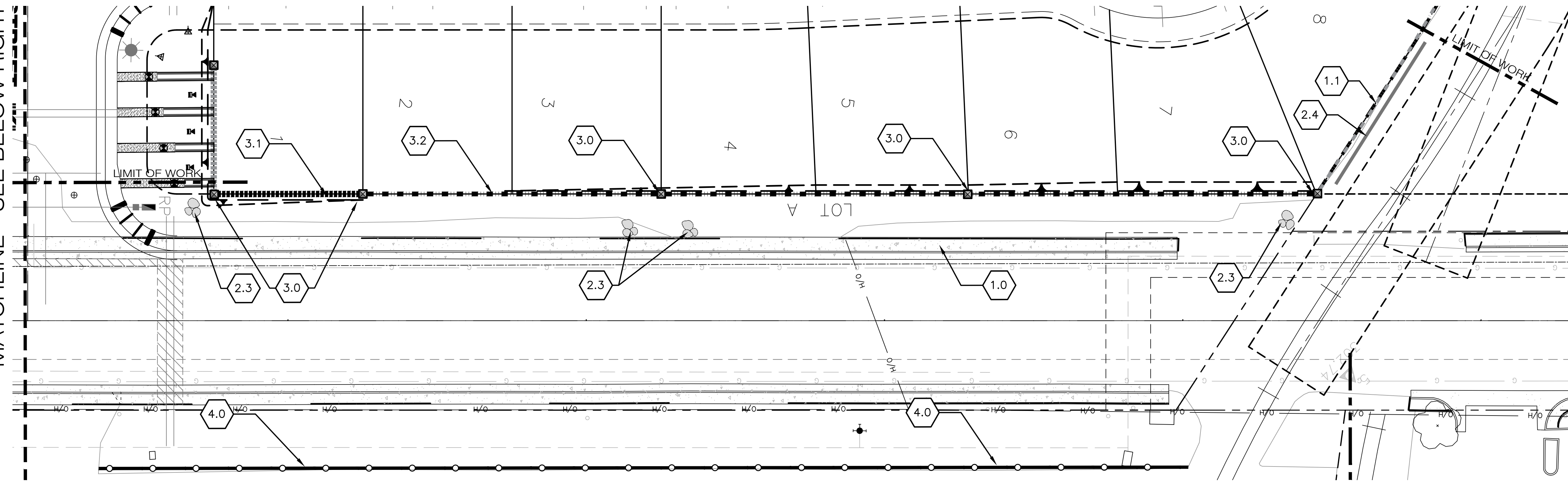
LEGEND

- 50 x 50 LOTS
- 45 x 65 LOTS
- 40 x 80 LOTS
- ENHANCED ELEVATIONS

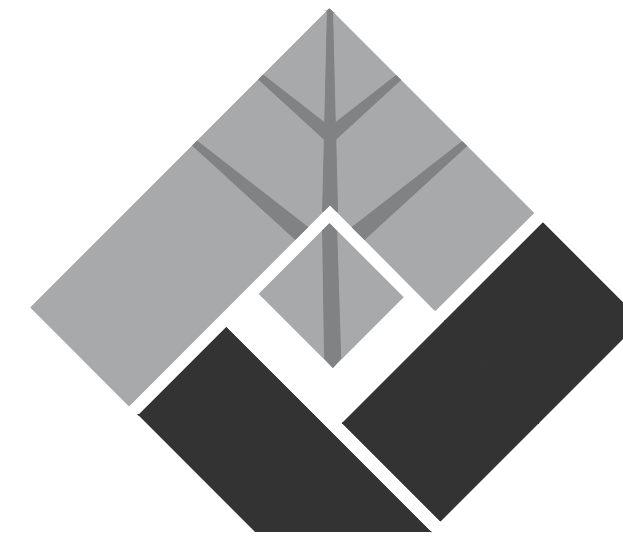


FOR THE COMMON LAW COPYRIGHT AND OTHER PROPERTY RIGHTS IN THESE PLANS, THESE PLANS AND DRAWINGS ARE NOT TO BE REPRODUCED, CHANGED OR COPIED IN ANY FORM OR MANNER WHATSOEVER WITHOUT FIRST OBTAINING THE EXPRESS WRITTEN PERMISSION OF FUHRMAN LEAMY LAND GROUP. NOR ARE THEY TO BE ASSIGNED TO ANY THIRD PARTY WITHOUT FIRST OBTAINING WRITTEN PERMISSION AND CONSENT.

MATCHLINE - SEE BELOW RIGHT



WATER EFFICIENT LANDSCAPE ORDINANCE:
I have complied with the criteria of the Water Efficient Landscape Ordinance and applied such criteria for the efficient use of water in the grading and drainage plan.
[Signature] 2956 10.26.2017
Applicant Signature License # Date



FUHRMAN LEAMY LAND GROUP
DESIGN • SERVICE • SOLUTIONS
2140 PROFESSIONAL DRIVE, SUITE 115
ROSEVILLE, CALIFORNIA 95661
916.783.5263 • FLANDGROUP.COM

JOB NO. : LMC1711
CONSULTANT

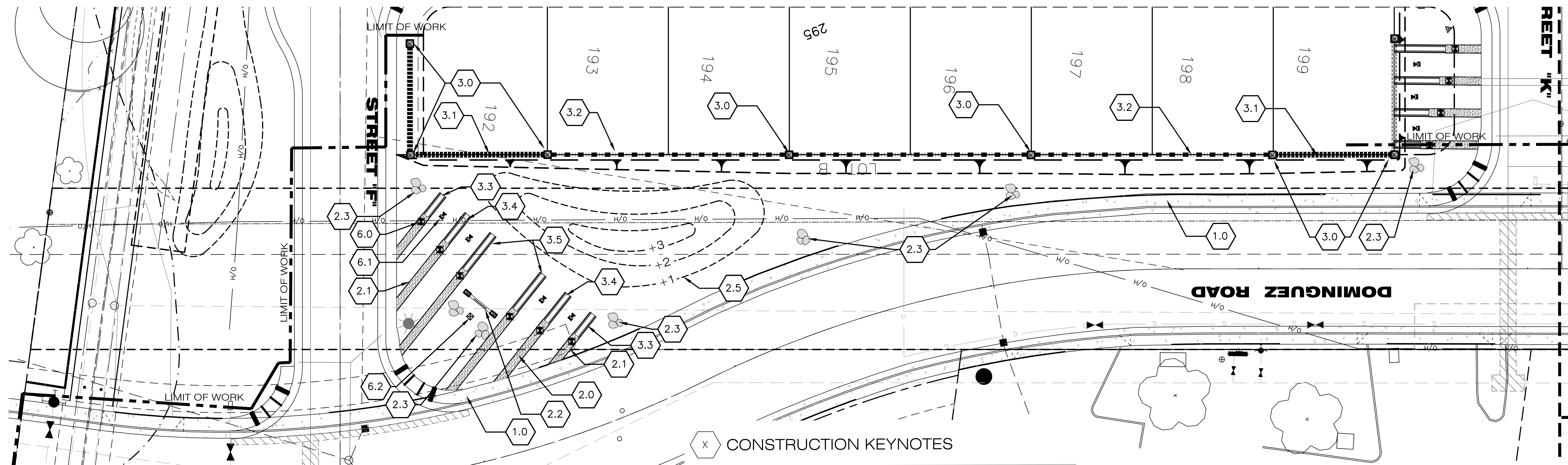
PROJECT:

SIERRA PINE
DOMINGUEZ RD FRONTAGE

DOMINGUEZ RD.
ROCKLIN, CA

CLIENT:
LEWIS MANAGEMENT CORP.
SACRAMENTO, CA

REVISIONS	DATE
△	
△	
△	
△	
ISSUE	DATE
① 1ST SUBMITAL	05/08/18
②	
③	
④	
⑤	



MATCHLINE - SEE ABOVE LEFT

X CONSTRUCTION KEYNOTES

1 - GENERAL KEY NOTES

- 1.0 SIDEWALK PER CIVIL PLANS.
- 1.1 SOUND WALL PER ONSITE IMPROVEMENT PLANS, SEE CIVIL SHEETS.

2 - SITE KEY NOTES

- 2.0 PROVIDE 2" DEEP DECOMPOSED GRANITE. SEE DETAIL E SHEET LC-2.0.
- 2.1 PROVIDE METAL EDGING, SEE DETAIL B, SHEET LC-2.0.
- 2.2 PROVIDE ENTRY SIGN, SEE DETAIL C, SHEET LC-2.0.
- 2.3 PROVIDE GRANITE BOULDERS SEE DETAIL A, SHEET LC-2.1.
- 2.4 PROVIDE ART INSTALLATION ON WALL, SEE DETAIL C, SHEET LC-2.0.
- 2.5 PROVIDE ONE FOOT CONTOURS, CROWN ALL BERMS A MIN. 6" HIGHER THAN THE HIGHEST CONTOUR INDICATED.

3 - CONCRETE KEY NOTES

- 3.0 PROVIDE 78" DECORATIVE PILASTER, SEE DETAIL A, SHEET LC-2.0.
- 3.1 PROVIDE PRTO II WALL WITH WOOD VENEER, SEE DETAIL D, SHEET LC-2.0.
- 3.2 PROVIDE PRTO II WALL, SEE DETAIL D, SHEET LC-2.0.
- 3.3 PROVIDE 10' LONG ENTRY LOG, SEE DETAIL B, SHEET LC-2.1.
- 3.4 PROVIDE 13' LONG ENTRY LOG, SEE DETAIL B, SHEET LC-2.1.
- 3.5 PROVIDE 16' LONG ENTRY LOG, SEE DETAIL B, SHEET LC-2.1.
- 3.6 PROVIDE 19' LONG ENTRY LOG, SEE DETAIL B, SHEET LC-2.1.

4 - METAL KEY NOTES

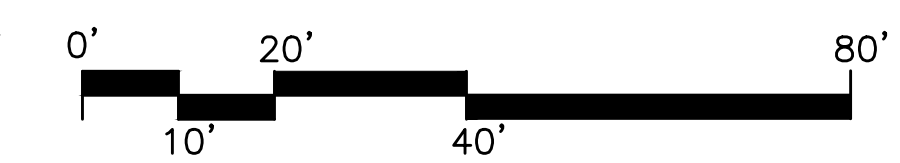
- 4.0 PROVIDE 84" TUBE STEEL SECURITY FENCE, SEE DETAIL G, SHEET LC-2.0.

6 - ELECTRICAL KEY NOTES

- 6.0 PROVIDE IN GROUND UPLIGHTS AT ENTRY LOGS. B-K LIGHTING PRECISION FLUSH LIGHT, HP2-OS-LED-TR-E65-MFL-A9-BLP-12-MT, PROVIDE PER MANUFACTURES SPECIFICATIONS. CONTACT PATRICK ROBITAILLE AT ALR, 916-203-0205.
- 6.1 PROVIDE UPLIGHTS AT TREES. B-K LIGHTING NITE STAR II UP LIGHT, NSII-LED-E64-MFL-A5-BLP-12-360SL/POWER PIPE, PP-J-12-T-TrE20-B-BLP-SF, PROVIDE PER MANUFACTURES SPECIFICATIONS. CONTACT PATRICK ROBITAILLE AT ALR, 916-203-0205.
- 6.2 PROVIDE UPLIGHT AT SIGN AND ROCKS. B-K LIGHTING NITE STAR II UP LIGHT, NSII-LED-E64-WFL-A5-BLP-12-360SL/POWER PIPE, PP-J-12-T-TrE20-B-BLP-SF, PROVIDE PER MANUFACTURES SPECIFICATIONS. CONTACT PATRICK ROBITAILLE AT ALR, 916-203-0205.



SCALE : 1" = 20' - 0"



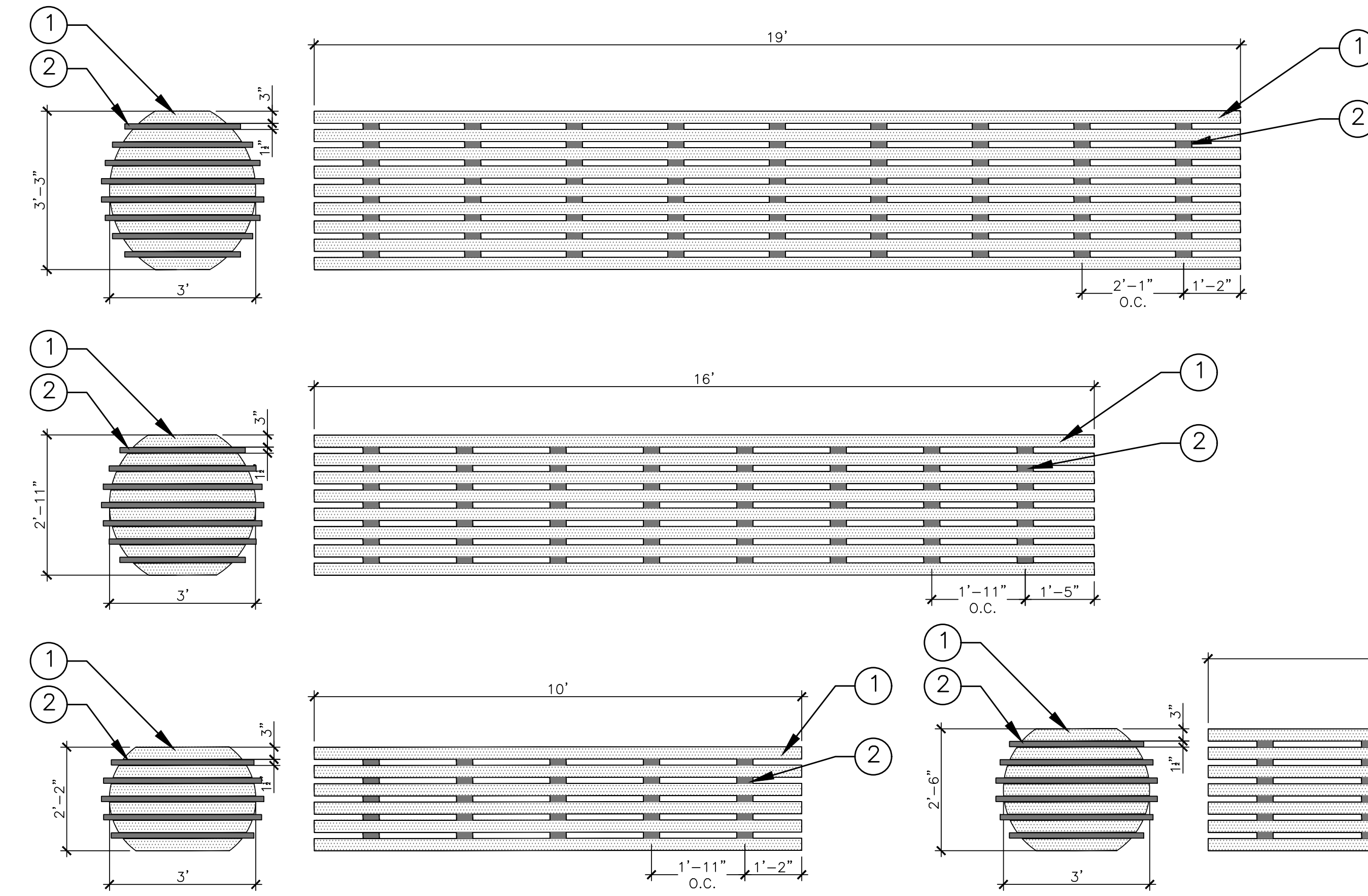
DRAWN : XX
CHECKED :
SCALE : 1" = 20'
SHEET TITLE:
LANDSCAPE CONSTRUCTION PLAN
SHEET
LC-1
OF 14 SHEETS

Agenda Item #9.

Packet Pg. 15

GENERAL NOTES

1. THE CONTRACTOR SHALL NOT BEGIN ANY WORK SHOWN ON THESE PLANS UNTIL THE CITY ENGINEER'S SIGNATURE OF APPROVAL IS AFFIXED HEREON AND ALL APPLICABLE PERMITS HAVE BEEN OBTAINED.
2. CONTRACTOR SHALL ASSUME SOLE AND COMPLETE RESPONSIBILITY FOR CONSTRUCTION OF THIS PROJECT, INCLUDING SAFETY OF ALL PERSONS AND PROPERTY. THIS REQUIREMENT SHALL APPLY CONTINUOUSLY AND NOT BE LIMITED TO NORMAL WORKING HOURS. THE CONTRACTOR SHALL DEFEND, INDEMNIFY AND HOLD THE CITY, OWNER, ENGINEER, AND LANDSCAPE ARCHITECT HARMLESS FROM ANY AND ALL LIABILITY, REAL OR ALLEGED, IN CONNECTION WITH THE PERFORMANCE OF WORK ON THIS PROJECT, EXCEPTING FOR LIABILITY ARISING FROM SOLE NEGLIGENCE OF THE CITY, OWNER, ENGINEER, OR LANDSCAPE ARCHITECT.
3. THE CONTRACTOR IS HEREBY NOTIFIED THAT PRIOR TO COMMENCING CONSTRUCTION, HE SHALL CONTACT ALL UTILITY COMPANIES FOR VERIFICATION OF THE CONSTRUCTION SITE OF THE LOCATIONS OF ALL UNDERGROUND FACILITIES WHERE SUCH FACILITIES MAY CONFLICT WITH PLACEMENT OF IMPROVEMENTS SHOWN ON THIS PLAN. CALL UNDERGROUND SERVICE ALERT AT 800-642-2444 PRIOR TO ANY EXCAVATION.
4. EACH PHASE OF THE PROJECT MUST BE CALLED TO U.S.A. AND CONTINUING EXCAVATION REPORTED EVERY 14 CALENDAR DAYS, AS THE MARKINGS ARE NOT PERMANENT AND WILL FADE OUT. IF THE U.S.A. NOTIFICATIONS ARE NOT KEPT UP TO DATE, THE EXCAVATION MAY BE STOPPED AND A NEW TWO DAY NOTICE WILL BE REQUIRED BEFORE CONTINUING THE EXCAVATION.
5. UNLESS OTHERWISE NOTED ON THE DRAWINGS, SPECIFICATIONS, OR SPECIFIED IN THE SPECIAL PROVISIONS, THE CONTRACTOR SHALL MAINTAIN IN SERVICE ALL DRAINAGE, WATER, SEWER, AND GAS LINES, INCLUDING HOUSE SERVICES; POWER LIGHTING, TELEPHONE, AND CABLE TV CONDUITS. CONTRACTOR MAY, AT HIS/HER COST, ARRANGE FOR DISCONNECTION OF HOUSE SERVICES OR OTHER FACILITIES.
6. CONTRACTOR WILL BE RESPONSIBLE FOR PROTECTING ALL EXISTING UTILITIES ON ALL PROJECTS BEING CONSTRUCTED INSIDE OR OUTSIDE OF PUBLIC RIGHTS-OF-WAY. THE UTILITY OWNER MAY ELECT TO PROVIDE THE NECESSARY PROTECTIVE MEASURES THEMSELVES AND BILL THE CONTRACTOR FOR THIS COST. EXISTING UTILITIES WILL FURTHER INCLUDE TRAFFIC CONTROL DEVICES, CONDUITS, STREET LIGHTS, AND ANY RELATED APPURTENANCES.
7. VERIFY ALL DIMENSIONS, DISTANCES, AND GRADES IN THE FIELD AND BRING ANY DISCREPANCIES TO THE ATTENTION OF THE LANDSCAPE ARCHITECT PRIOR TO COMMENCING WITH THE WORK.
8. PROVIDE ALL CLEARING, DEMOLITION, REMOVAL, AND SITE PREPARATION NECESSARY FOR THE PROPER EXECUTION OF ALL WORK SHOWN ON THESE DRAWINGS AND DESCRIBED IN THE SPECIFICATIONS.
9. THE CONTRACTOR WILL BE HELD TO HAVE EXAMINED THE SITE AND COMPARED IT WITH THE DRAWINGS AND SPECIFICATIONS, TO HAVE CAREFULLY EXAMINED ALL THE CONTRACT DOCUMENTS, AND TO HAVE SATISFIED THEMSELVES AS TO THE CONDITIONS UNDER WHICH THE WORK TO BE PERFORMED BEFORE ENTERING INTO THIS CONTRACT. NO ALLOWANCE SHALL SUBSEQUENTLY BE MADE ON BEHALF OF THE CONTRACTOR ON ACCOUNT OF AN ERROR ON HIS/HER PART OR HIS/HER NEGLIGENCE OR FAILURE TO ACQUAINT THEMSELVES WITH THE SITE OR THE STREETS OR ROADS APPROACHING THE SAME.
10. CONTRACTOR WILL ARRANGE FOR AND PAY ALL NECESSARY PERMITS FOR THE WORK SHOWN ON THESE PLANS AND INDICATED IN THE SPECIFICATIONS.
11. CONTRACTOR WILL PROVIDE POSITIVE DRAINAGE IN ALL AREAS (MINIMUM 2% IN PLANTING AREAS). CONTRACTOR SHALL BRING ANY DISCREPANCIES THE ATTENTION OF THE LANDSCAPE ARCHITECT PRIOR TO COMMENCING WITH ANY FURTHER WORK.
12. CONTRACTOR WILL REMOVE FROM THE SITE ALL DEBRIS AND UNSUITABLE MATERIAL GENERATED DURING AND BY THEIR OPERATIONS.
13. CONTRACTOR SHALL PROTECT EXISTING DRAINAGE PATTERNS UNLESS OTHERWISE NOTED ON THE DRAWINGS.
14. ALL WRITTEN DIMENSIONS WILL SUPERSEDE SCALED DISTANCES. DIMENSIONS ARE FROM FACE OF BUILDING, CURB, WALLS, PROPERTY LINES OR AS NOTED ON THE DRAWINGS.
15. CONTRACTOR WILL VERIFY LOCATION OF ALL EXISTING UTILITIES ON BEFORE COMMENCING WITH WORK. ANY DISRUPTION OR DAMAGE TO SITE UTILITIES CAUSED BY WORK UNDER THIS CONTRACT WILL BE CORRECTED BY THE CONTRACTOR.
16. TEMPORARY WATER & ELECTRICAL SUPPLY WILL BE MADE AVAILABLE ON SITE FROM THE OWNER. CONTACT THE OWNERS REPRESENTATIVE FOR EXACT LOCATIONS.
17. CONTRACTOR WILL PROVIDE PORTABLE SANITARY FACILITIES ADEQUATE ALL WORKERS. FACILITIES ARE SUBJECT TO APPROVAL AND THE HEALTH DEPARTMENT.



LEGEND

1. WOOD PLANKS MADE OUT OF METAL WITH WOOD STAMPING ON THE OUTSIDE EDGES. CONTACT KELLY OAKS AT MRC 916-337-7494.
2. 4\"/>

NOTES:

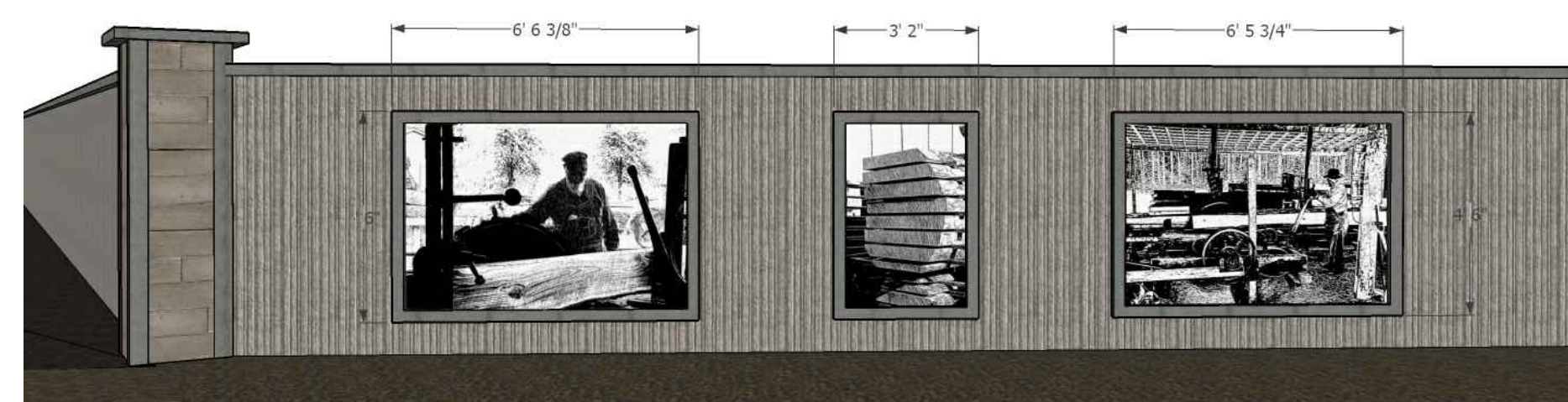
SUBMIT SHOP DRAWINGS FOR MONUMENT LOGS.

B ENTRY MONUMENT MILLED LOGS

SCALE: 1/2\"/>

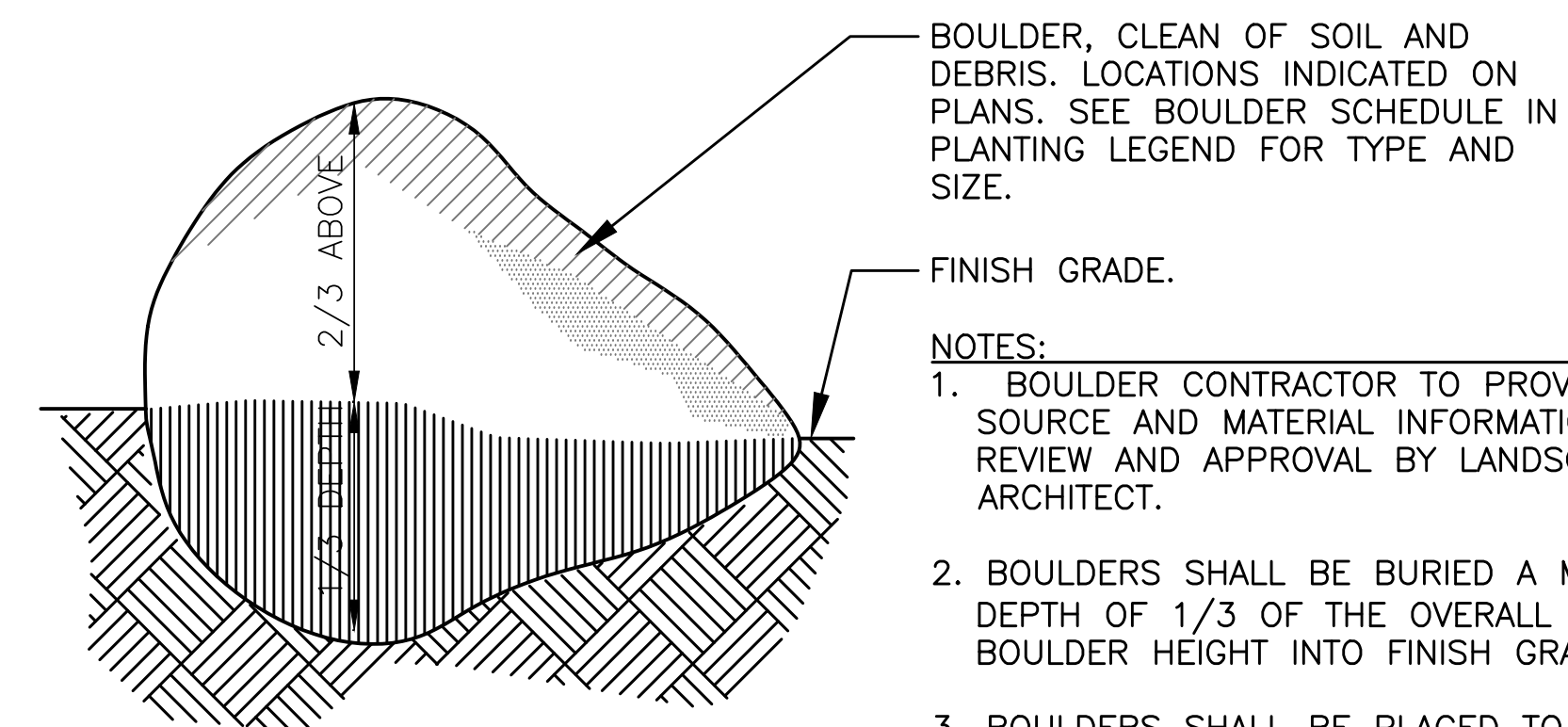
LEGEND:

- 3 HISTORICAL IMAGES OF SAWMILL ELEMENTS ROUGHLY IN THE DIMENSIONS SHOWN.
- ARTIST MUST SUBMIT 3 EXAMPLES OF IMAGES TO CLIENT FOR APPROVAL.
- ARTISTS MUST SUBMIT SAMPLES OF IMAGERY MATERIAL. THE IMAGES CAN BE MADE OUT OF LAZAR CUT METAL, MOSAIC TILES, ARTIST GRAPHIC RENDITIONS AND PRINTED ON APPROVED MATERIAL.
- FINAL ARTWORK WILL BE APPROVED BY THE OWNER.



C ART WORK ON WALL

SCALE: NTS

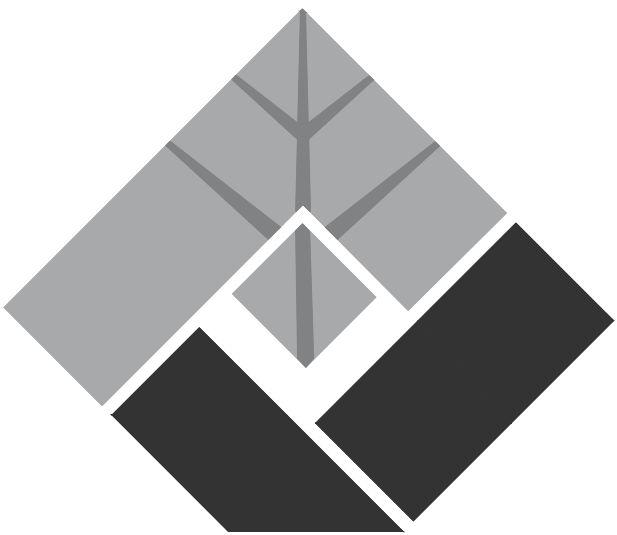


NOTES:

1. BOULDER CONTRACTOR TO PROVIDE SOURCE AND MATERIAL INFORMATION FOR REVIEW AND APPROVAL BY LANDSCAPE ARCHITECT.
2. BOULDERS SHALL BE BURIED A MINIMUM DEPTH OF 1/3 OF THE OVERALL BOULDER HEIGHT INTO FINISH GRADE.
3. BOULDERS SHALL BE PLACED TO RESEMBLE A NATURAL APPEARANCE.

A BOULDER PLACEMENT

SCALE: 1/2\"/>



**FUHRMAN LEAMY
LAND GROUP**

DESIGN • SERVICE • SOLUTIONS

2140 PROFESSIONAL DRIVE, SUITE 115
ROSEVILLE, CALIFORNIA 95661
916.783.5263 • FLANDGROUP.COM

JOB NO. : LMC1711

CONSULTANT

PROJECT:

SIERRA PINE

**DOMINGUEZ RD
FRONTAGE**

DOMINGUEZ RD.
ROCKLIN, CA

CLIENT:
LEWIS MANAGEMENT CORP.
SACRAMENTO, CA

REVISIONS DATE

REVISIONS	DATE
△	
△	
△	
△	
ISSUE	DATE
① 1ST SUBMITAL	05/08/18
②	
③	
④	
⑤	



DRAWN : XX

CHECKED : AS

SCALE :

SHEET TITLE:

**LANDSCAPE
CONSTRUCTIO
DETAILS**

SHEET

LC-2

OF 14 SHEETS







Shado Metal Art



















Parks, Recreation, and Arts Commission Report

Subject: Sunset Whitney Recreation Area Project Updates – Item 11

Submitted by: Karen Garner, Director & Sarah Novo, Manager

Date: July 11, 2018

Department: Parks & Recreation

- **Staff Recommendation:**
 - Provide subcommittee and staff with further direction on SWRA master plan elements.

BACKGROUND:

Council has directed the Parks, Recreation and Arts Commission to solicit ideas and feedback from the community on the Sunset Whitney Recreation Area. This includes potential uses, priorities, funding sources and partnerships.

Actions To Date:

- In January, Commission adopted Guiding Principles and Objectives for outreach and planning of the SWRA and approved the working name, Sunset Whitney Recreation Area.
- A webpage for SWRA was created on the city website. www.rocklin.ca.us/sunsetwhitneyrecreationarea
- The first community workshop was held on February 28th, 2018 with approximately 300 participants.
- The first organized community volunteer SWRA beautification event was held on March 10th, 2018.
- An online version of the forum was developed and placed online for citizens to share feedback. The online forum was open to the public for one week and received feedback from 533 participants.
- Subcommittee consisting of Chair Hartwell and Commissioner Richey reviewed all community input and prepared a recommendation to the full Commission for consideration.
- At the May meeting, Commission voted on recommendations to the Council regarding SWRA.
- At the June meeting, the Commission selected Commissioners Anderson and Hartwell to serve on a subcommittee for the SWRA Master Plan
- On June 26, the City Council unanimously approved the recommendations of the Parks, Recreation and Arts Commission.

Next Steps

As directed by Council, the Commission and staff will work to achieve some smaller, low-cost projects and conduct some initial research while preparing the SWRA Master Plan. Small projects include;

- Conversion of the former golf cart paths to a trail system.
- Historic Bridges Analysis
- Restroom Restoration
- Nature Discovery/Play Areas
- Cross Country and Run/Walk Course
- Conversion of tennis courts to pickleball courts

These items will be analyzed as part of the SWRA Master Plan;

- Analysis of the Reuse of Clubhouse Buildings
- Memorial/Veterans Park Relocation

- Exercise/Fitness Uses
- Wildlife sanctuary/nature preserve/wildlife viewing/trees/natural plants

The SWRA Master Plan will help define the vision for the site as well as provide guidance for its long-term use and development as a unique asset for the community and region. This master plan should include;

- Analyses of recommended uses
- Potential sources of funding, revenue and projected expenses
- Site planning
- Timeframes
- Potential partnerships
- Priorities

There are other elements which can be considered that are often found in master plan documents. When considering other elements, staff recommends reviewing the Guiding Principles that were adopted for the SWRA to ensure the elements support the Guiding Principles.

Other elements the Commission may consider;

- Plan objectives/goals
- SWOT analysis (strengths, weaknesses, opportunities and threats) (site specific or broader)
- Asset inventory
- Connections and interface with surrounding areas
- Historical information

The Commission may have additional suggestions to consider based on other park master plan examples. The subcommittee will meet prior to the next Commission meeting and can further define what each element will include, prepare a timeline and a list of tasks to be assigned to Commissioners and staff.

Preparation of the Master Plan will also include further public input opportunities. As a more refined outline is developed, opportunities for public input can be noted. The Plan can be largely done in house with consultants assisting with technical portions, if needed.

Attachment A – Adopted Guiding Principles for the SWRA

Sunset Whitney Recreation Area

As we reimagine the possibilities for the Sunset Whitney Recreation Area and look toward ideas and concepts for improvement upon this space, we are led by a framework of principals adopted by the Parks, Recreation and Arts Commission. These principals outline the process and priorities as well as provide structure as we consider opportunities.

Guiding Principals

- The Sunset Whitney Golf Course property will serve as an asset for the entire Rocklin community. Therefore, input should be sought from all Rocklin citizens and groups and should represent a variety of age groups and interests.
- The Commission shall collect and evaluate community input and make recommendations to the City Council.
- Similar to city parks, residents that border the property are more directly impacted by the condition and use of the property. This should be taken into consideration and acknowledged and a balance sought between the needs of adjacent residents and the greater community.
- Input on all aspects of the property should be sought including the type of amenity desired, potential short and long-term uses, level of maintenance and potential funding sources.
- Recommendations shall include consideration of one-time and ongoing funding needs, the identification of potential funding sources, identification of potential impacts to other city programs, services or personnel, consideration of the number of people or groups that will benefit, compatibility and potential partners.
- Recommendations shall take into consideration how they serve to further city's adopted goals and objectives including the General Plan, Citywide Strategic Plan, Parks and Trails Master Plan, Trails Strategy and Action Plan and other applicable documents.
- Input shall be obtained through a variety of manners including, surveys, workshops, social media and other public forums.
- Input and suggestions received should be considered informational and evaluated on its own merit as well considering compatibility and affect with other existed or planned elements. Partnership or other synergistic opportunities should be sought where possible.
- It is acknowledged that some desired amenities may not be feasible or advisable due to a variety of issues including funding constraints, compatibility, lack of broad interest or other circumstances.

Objectives

- Provide short-term recommendations to council for those items that can be implemented short-term, but also gather data and information with the goal of preparing a master plan in the future.
- Develop a plan for outreach including gathering input on use, amenities, priorities, funding, volunteer interest and other related matters.
- Research and vet ideas which commission believes have merit and prepare recommendations to City Council.
- Receive public input on recommendations.
- Develop a work plan that includes timeframes for short and long-term objectives.

Parks, Recreation and Arts Commission Project Summary - July 11, 2018

Item	Past Action	Next Steps	Funding
PARKS			
JSP Spray Park	Commission and CC review of conceptual drawings in 2017; Contract for design to CC on 6/12/18.	Design will take approximately 6 months. Designs will be reviewed by Commission. Construction to begin in winter with completion by early summer 2019.	Fund 311 (Bond Funds)
Whitney Park Phase 2	Survey completed in 2017; Funding sources outlined in Park Manager Staff Report at 3/14/18 meeting;	Commission recommendation	Fund 307 (NW Rocklin Community Park Fee)
Memorial Park	Discussion to move to quieter more passive area; considered area next to PD; now considering area within SWRA; In current CIP	Integrate Memorial Park concept as part of SWRA Master Plan	Unfunded
Finn Hall upgrades	Discussion of potential addition of plaza area and reconfigured walkway from PD driveway; determined to be low priority and put on hold indefinitely	None	N/A
Front Street Property	City owned lot adjacent to Barudoni Building (Cante Ao Vinho Winery). Initial concept discussions included plaza area to support adjacent businesses and events at chapel.	Commission may discuss to determine need and priority. Options include retaining property or potentially recommending sale.	Unfunded
Sunset Whitney Recreation Area	-Commission recommendations for SWRA approved by CC 6/26 Committee to draft SWRA Master Plan	- Draft Master Plan	Largely handled in-house with some consultant funding in FY 18/19 for technical components
Parks and Trails Master Plan	At 5/9/18 meeting Commission appointed Commissioners Armstrong-Bryant and Anderson to subcommittee to work on update to Parks & Trails Master Plan and Trails Strategy & Action Plan	Committee to draft updates and bring back to Commission for consideration; Recommendations to Council	N/A
TRAILS			
Quarry Park Trail Section	Trail identified within Trails Strategy & Action Plan	Staff will present update on trail status including funding and timing at July meeting	Some sections to be constructed by private development; some sections to be city funded, no funding identified
Trails Strategy & Action Plan	At 5/9/18 meeting Commission appointed Commissioners Armstrong-Bryant and Anderson to subcommittee to work on update to Parks & Trails Master Plan and Trails Strategy & Action Plan	Committee to draft updates and bring back to Commission for consideration; Recommendations to Council	N/A
ARTS			
Off the Rails Mining Cart	Artists selected for first 5 mining carts; carts distributed to selected artists; reveal to be at 9/21/18 Gather event at Quarry Park; funding identified for purchase of four additional carts	Funding for artists stipend and installation need to be identified for additional four carts; ATF to recommend cart locations	Current 5 carts included in FY 17/budget and Placer Arts grant funding

Big Gun Art Project	Based on recommendation of Council, commission artist to create art piece utilizing components of Big Gun shed dismantled in 2017	-Review available art elements & catalog (Comm or ATF member or more?) - Identify funding sources and potential partnerships (i.e., developer of Big Gun site)	TBD
City Hall Mural	Past discussion of potential of art mural on back of City Hall above Big Gun Quarry/Quarry Park Adventures	Coordinate discussion with Central Services & timing of City Hall refurbishment and LFA, operators of Quarry Park	Unfunded
Public Art Inventory	past discussion on desire to inventory public art, place information on website and possibly coordinate with historic sites	Commission and/or ATF to create inventory and submit information to staff for inclusion on website	N/A
Marketing of Rocklin Public Art	Discussion of media such as Sac 365 to promote Rocklin arts	Commission and/or ATF to reach out to media outlets	N/A

COMMITTEES

Art Task Force	Stockton & Armstrong-Bryant
2 x 2 Committee	Stockton & Anderson
Whitney Park Phase 2	Hartwell
Parks & Trails Master Plan and Trails Strategy & Action Plan Updates	Armstrong-Bryant and Anderson

SWRA Master Plan	Anderson & Hartwell
------------------	---------------------

Venue Rental Report - April-June 2018

Rental Usage	General	Weddings	Instructors	MOU/Contract	Churches	Seniors	City Use	RUSD	Total
Event Center Ballroom	13	22		1			7	3	46
EC Garden Room	16	4	1	3			11	1	36
EC Alpine Room	2	1							3
EC Beverage Room									
EC Buffet Room									
EC Bridal Suite									
EC Room 101	6		52	1			4		63
EC Room 102	1		19	1		10	5		36
EC Room 105	5		4	1			3		13
EC Room 107	5	1		1		4	8	1	20
Community Center	25	2	1	28			6		62
Parks & Rec Building	34		87	20			3		144
Picnic Pavilions	105	1			2	14	1	2	125
Total Usage	212	31	164	56	2	28	48	7	1,096

	April-June 2017	April-June 2018	16-17 Year to Date	17-18 Year to Date
Event Center	72,878.75	61,543.34	316,198.75	342,116.67
Community Center	10,137.50	10,762.00	50,309.50	66,577.00
Parks & Rec Building	5,025.00	7,037.00	21,720.00	33,240.23
Picnic Pavilions	13,550.00	2,800.00	27,960.00	25,400.00
Total Revenues	101,591.25	82,142.34	416,188.25	467,333.90

	17-18 Budget	Fiscal Year to Date
2017 - 2018 Venue Rental Revenues	353,800.00	467,333.90



Parks, Recreation, and Arts Commission Report

Subject: Director's Report – Item 14

Submitted by: Karen Garner, Director

Date: July 11, 2018

Department: Parks & Recreation

Special Event & Large Park Rental Process Review

As our Community Parks have become more and more popular for special events and large rentals, staff is reviewing our application and review process to ensure consistency with requirements and charges applied to these events. Co-sponsored city events such as Run Rocklin and Celebrate America have agreements in place that are updated and reviewed by affected departments each year. These agreements note responsibilities and requirements of both the City and the applicant. Other events, such as the Rotary Brewfest and Diwali Festival are considered straight park rentals and fill out the same rental application as a pavilion rental for a birthday party. Large events, whether they are co-sponsored or a straight rental, have the same park impacts, so staff will be reviewing our procedures and application process as well as fees to ensure impacts are minimized and staff costs are recovered.

Novus Agenda System

The Parks, Recreation and Arts Commission is on schedule for fully converting to the Novus Agenda in August. Agenda templates will largely look the same, but you may notice some minor changes. I also anticipate a few formatting issues as we work out the kinks. Conversion to the Novus Agenda system includes video streaming and archiving of the meetings. One big advantage of the Novus Agenda system is that it will be very easy to review any agenda item for each meeting. Each agenda item is “bookmarked” while the meeting is taking place. Once the video is archived, viewers can easily skip to whatever agenda they would like to view and listen to. This feature will be an excellent supplement to the minutes of each meeting and should greatly reduce the time staff currently spends on producing minutes for each meeting. The video system will be tested out at the July 10 Council meeting and if all goes well, may be rolled out to the Commissions in August.

Upcoming City Events, Co-Sponsored & QPA Events

July 13 – Gather & Movie @ Kathy Lund Community Park (Peter Rabbit)
 July 28 - QPA Motown Concert
 July 29 – Stairway to Stardom (city rental event)
 August 3 - Gather & Movie @ Twin Oaks Park (Coco)
 August 4 – Backpack Giveaway/Destiny Community Center @ Johnson-Springview Park
 August 11 – Foghat (city concert series)
 August 19 – Homestead Country Concert (city concert series)
 August 25 – Woofstock @ Johnson-Springview Park
 September 8 – Frankie Avalon (city concert series)
 September 9 – Patriot Day @ Quarry Park
 September 16 – Hot Chili Cool Cars @ Quarry Park & Rocklin Road
 October 6 – Mini Maker Faire @ Sierra College

We've had great attendance at our combined Gather/movies nights this year and all concerts have been very well attended as well. Interestingly, there is an event in Roseville called Food Truck Cinema held at Woodcreek Oaks

Golf Club that includes food trucks, beer/wine sales, live music and a movie, however these are ticketed events with ticket prices from \$5 to \$25 <http://www.foodtruckcinemas.com/roseville-ca.html>

For more details on city events, go to <https://www.rocklin.ca.us/events>

For more info. on Quarry Park Adventures concerts, go to <https://quarrypark.com/>



Parks, Recreation, and Arts Commission Report

Subject: Park Manager Report

Submitted by: Sarah Novo, Parks and Recreation Manager

Date: July 11, 2018

Department: Parks & Recreation

Staff Recommendation:

- Informational Only. No Action necessary.

Johnson Springview Water Play Area:

A design contract for the water play area at Johnson Springview Park was submitted for Council consideration and approved on June 12th, 2018.

A tentative timeline is as follows:

Mid July: Surveys received, map infrastructure, master plan conceptual drawings

August/September: Master plan to Council & Commission

October: Construction drawings

November/December: Out to bid

January: Bid award, commence construction

Although there are many factors which could potentially alter this timeline, the goal is to host a grand opening in Summer 2019.

RRUFF Dog Park at Johnson Springview:

An MOU has been drafted and is scheduled for presentation before the RRUFF board at their meeting this week.

As outlined in the MOU, RRUFF's Board of Directors and the City have agreed to continue sharing responsibilities with regard to general maintenance to the dog park on all days throughout the week. In an effort to determine the best schedule for bark replacement, the City and RRUFF have decided to enter into a pilot program through which each party will monitor the condition of the dog park throughout the next year and make recommendations to either redistribute or re-bark the dog park areas with the goal of maintaining the quality of this dog park year-round in a responsible and fiscally sustainable manner.

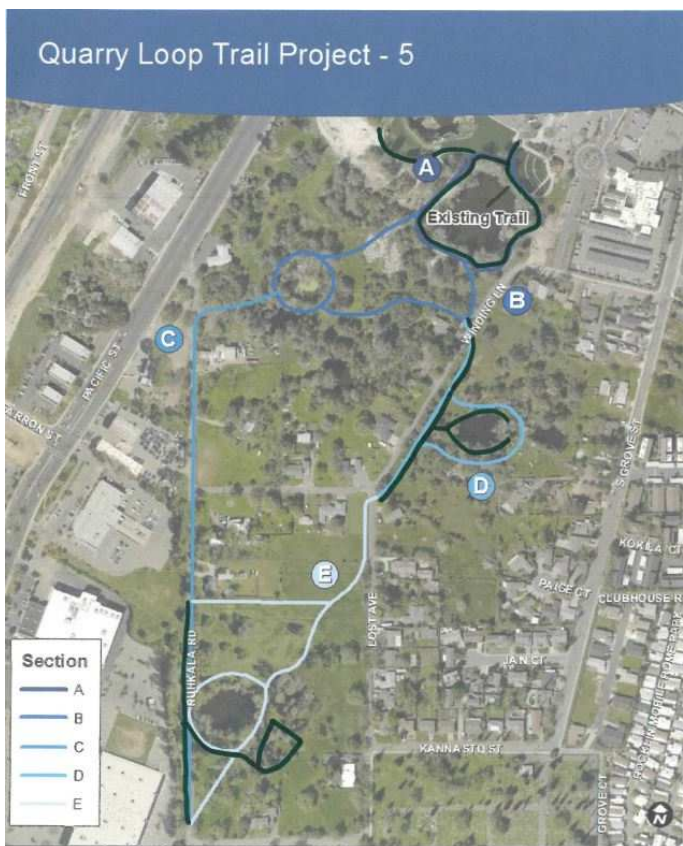
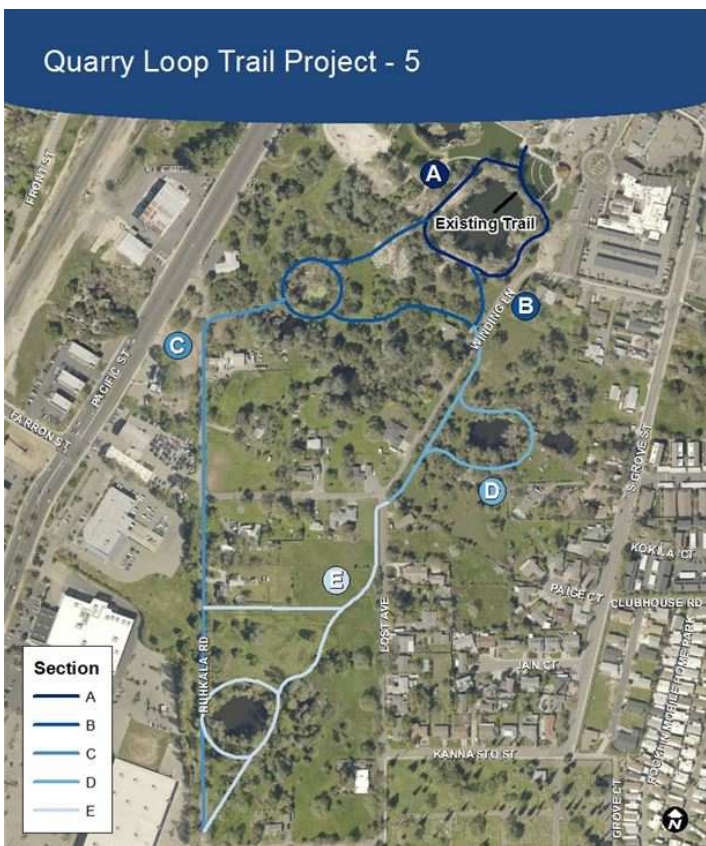
Additionally, as we look forward toward the cost of continued maintenance, Parks and Recreation will assist wherever possible in the marketing and promotion of fundraisers specific to the dog park, with RRUFF contributing 50% of all dog park fundraising proceeds toward the continued maintenance needs of the dog park, including but not limited to purchase of bark.

Park Landscape Maintenance Contract:

On June 30, 2018 the landscaping contract for the continued mowing and maintenance of Rocklin parks and landscaping areas was scheduled to expire. The most economical approach was to extend the existing contract for an additional year of service, and as such staff negotiated to continue the contract at the same terms for an additional year.

Quarry Park Trail updates:

The Quarry Loop Trail runs between Quarry Park and Ruhkala Road and connects the Quarry District with current commercial and current/future residential developments. Quarry Loop is a local trail that begins at Quarry Park and runs to Winding Lane and Lost Avenue before connecting with Ruhkala Road at the corner of Evelyn Road. The loop will meander past four historic quarries and is broken into 5 sections, the first of which was constructed with the installation of Quarry Park. The Quarry Loop sections are currently under constructed and will continue to be constructed on undeveloped land currently owned by the City of Rocklin or through private developments as they are built.



Completed to date

Section A is a shared use path which runs along the edge of Quinn Quarry in Quarry Park. This trail is part of the larger Quarry Loop Trail system which is presented in 5 sections. Section A is intended to meet Section B at two points on the southwestern side of Quinn Quarry. Section A was City funded and installed in Spring of 2016 with the installation of Quarry Park. It is currently accessible from the parking lot entrance to Quarry Park and meanders around the back of the amphitheater seating area.



Section B is in close proximity to the development of Quarry Park Adventures, and once the adventure park has been completed staff will assess existing infrastructure and terrain to best develop this portion of the trail. This portion of the trail was intended as a shared use path which would run from the west side of Quarry Park then loop around a small unnamed quarry before heading east and returning to Quarry Park.

Section C would begin at the corner of Ruhkala Road and Evelyn Avenue and connect back to the main trail at Section B. It is intended for this trail to run parallel to Ruhkala Road. The southern portion of this trail is conditioned for development as part of the proposed Villages at Civic Center development project.

Section D would loop around the quarry east of Winding Lane connecting Sections A and B to Section E. A portion of this trail is conditioned for development as part of the proposed Winding Lane Estates development project

Section E loops the Wickman Quarry which can be seen from Ruhkala Rd. and is entirely upon private property. A portion of this trail is conditioned for development as part of the proposed Villages at Civic Center development project, however it will no longer cut through the property diagonally to connect to Lost Avenue and section D. An alternative may be to re-route the trail to Evelyn Avenue and up Lost Avenue. This also brings the trail closer to the Rocklin Cemetery which allows for further connectivity and historic educational opportunities.

Adopt a Park and Trail Keeper Program:

Rocklin Parks & Recreation’s “Adopt-A-Park” program provides an opportunity for individuals, volunteer groups, neighborhood associations and businesses to take an active role in the maintenance and improvement of Rocklin’s 36 parks. These park champions provide the extra eyes and ears on a weekly basis to ensure that parks remain clean, safe and well maintained. Volunteers may participate in routine maintenance such as trash collection, graffiti inspection, leveling of wood chips and turf/irrigation inspections, or may schedule special maintenance opportunities such as replacement of trees and shrubs or painting /staining work projects. The parks department currently has several neighborhood and community parks adopted by individual volunteers, families and business organizations, and is actively soliciting additional volunteers. Any group wishing to adopt-a-park can obtain an application from the Parks and Recreation department, located within Johnson Springview Park at 5460 5th St. Rocklin, CA. or download one online at: <https://rocklin.ca.us/parks>

Staff is also in the process of developing a “Trail Keeper” program which resembles the idea of routine volunteer presence and maintenance, but is specific to the preservation of Rocklin’s trail system.



Boulder Ridge Park:

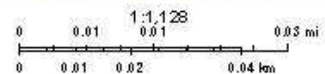
The Parks & Recreation department receives a variety of maintenance and special park project requests on a weekly basis, and prioritizes those requests based upon the most need and highest priority. An example of this would include addressing public health and safety concerns as an immediate response, with other requests, systemic concerns or maintenance issues remediated according to priority and as time allows. In response to reports of insufficient lighting and safety concerns within Boulder Ridge park, staff has ordered additional light posts and prepared the area surrounding Boulder Ridge Park for the installation of 4 additional light fixtures to this area. This project is anticipated to reach completion by August, 2018.

Boulder Ridge Lighting Addition



07/06/2018 11:25:36 AM

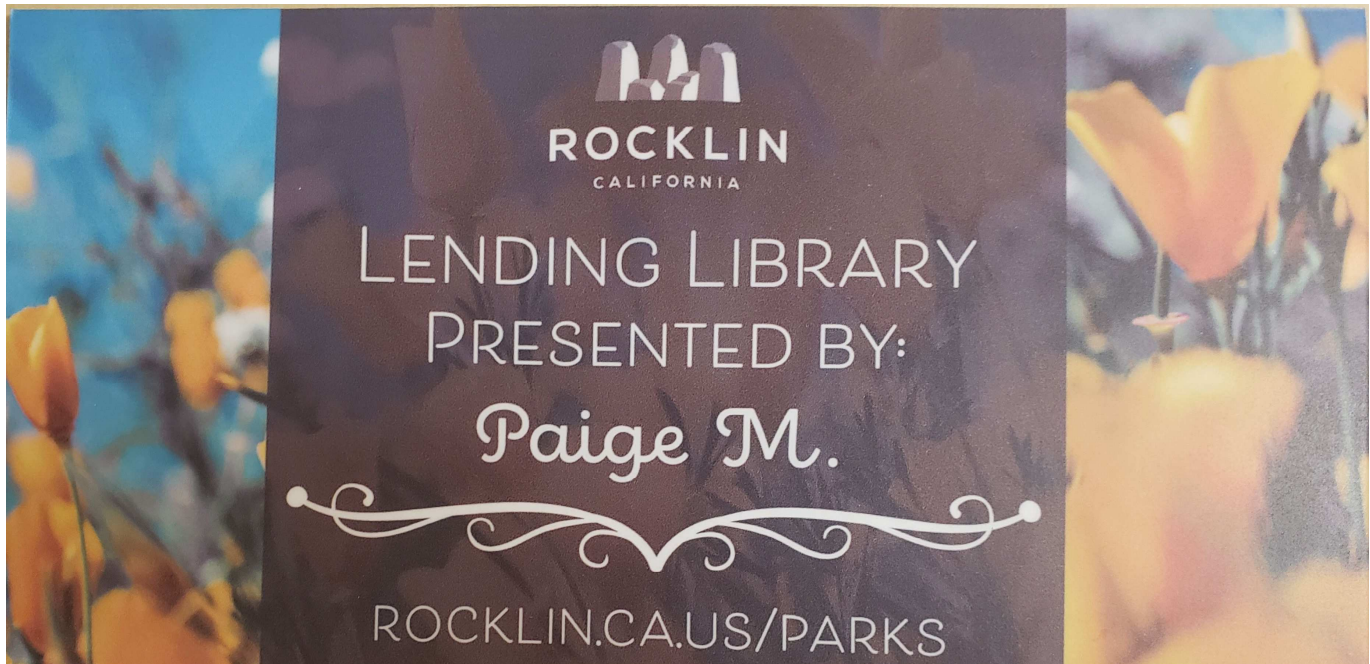
- City of Rocklin Boundary
- Parcels



City of Rocklin, Source: Esri, DigitalGlobe, GeoEye, Earthstar Geographics, CNES/Airbus DS, USDA, USGS, AeroGRID, IGN, and the GIS User
City of Rocklin
City of Rocklin, Microsoft | City of Rocklin | City of Rocklin, Placer County | City of Rocklin, City of Roseville, Esri, HERE, Garmin, USGS, Bureau of Land Management, EPA, NPS, USDA |

Little Free Library Pilot Program:

In response to a request from a young Sunset Ranch elementary student, parks staff will be installing a free little library at Brigham and Hawes Park. This student and her family will be placing books within the library for park-goers and neighbors to enjoy, and will be also keeping an eye on its appearance and any maintenance needs. This is a pilot project to test out the idea, but if it is successful – may be incorporated as a passive recreational option within other Rocklin parks as well.

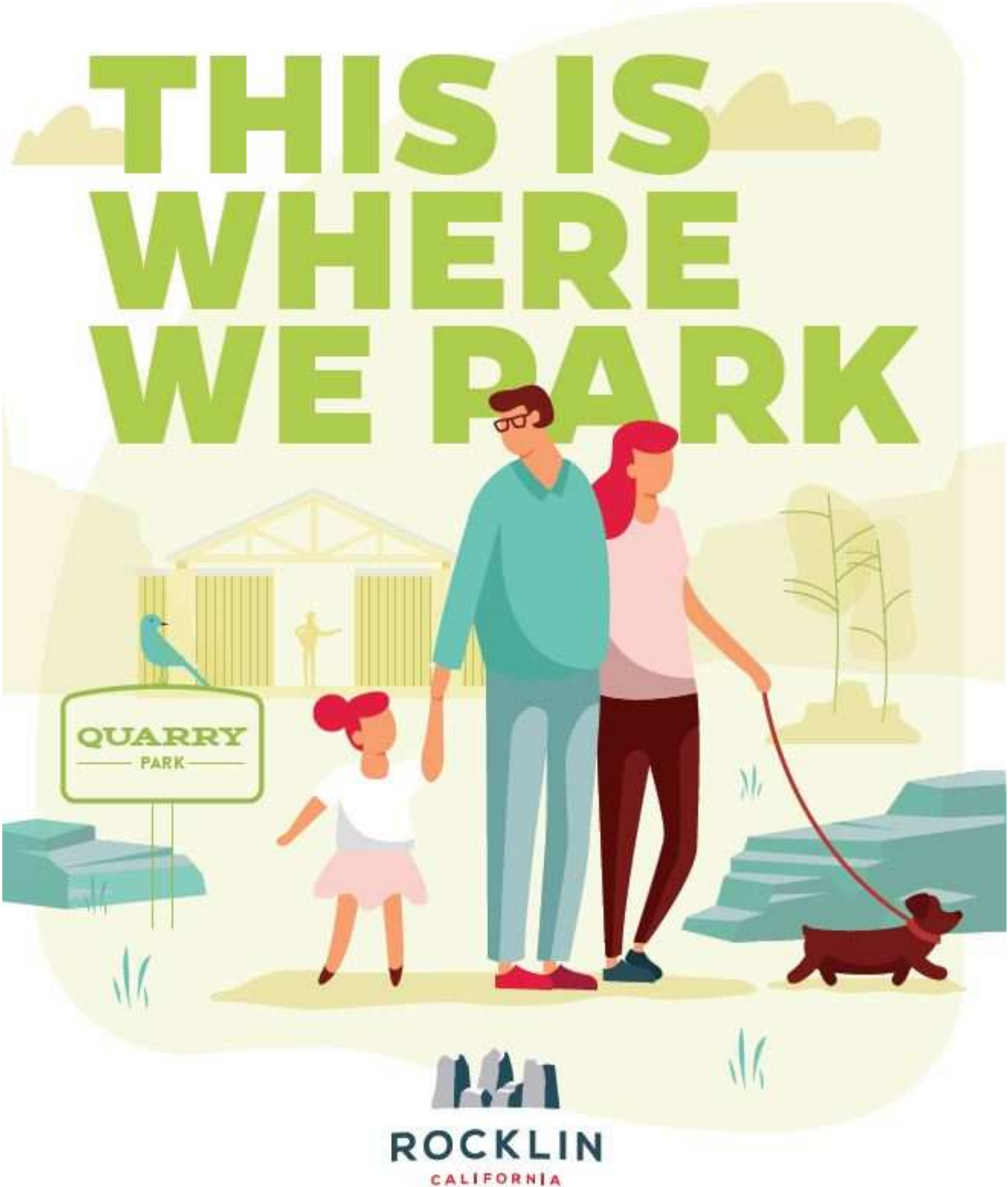


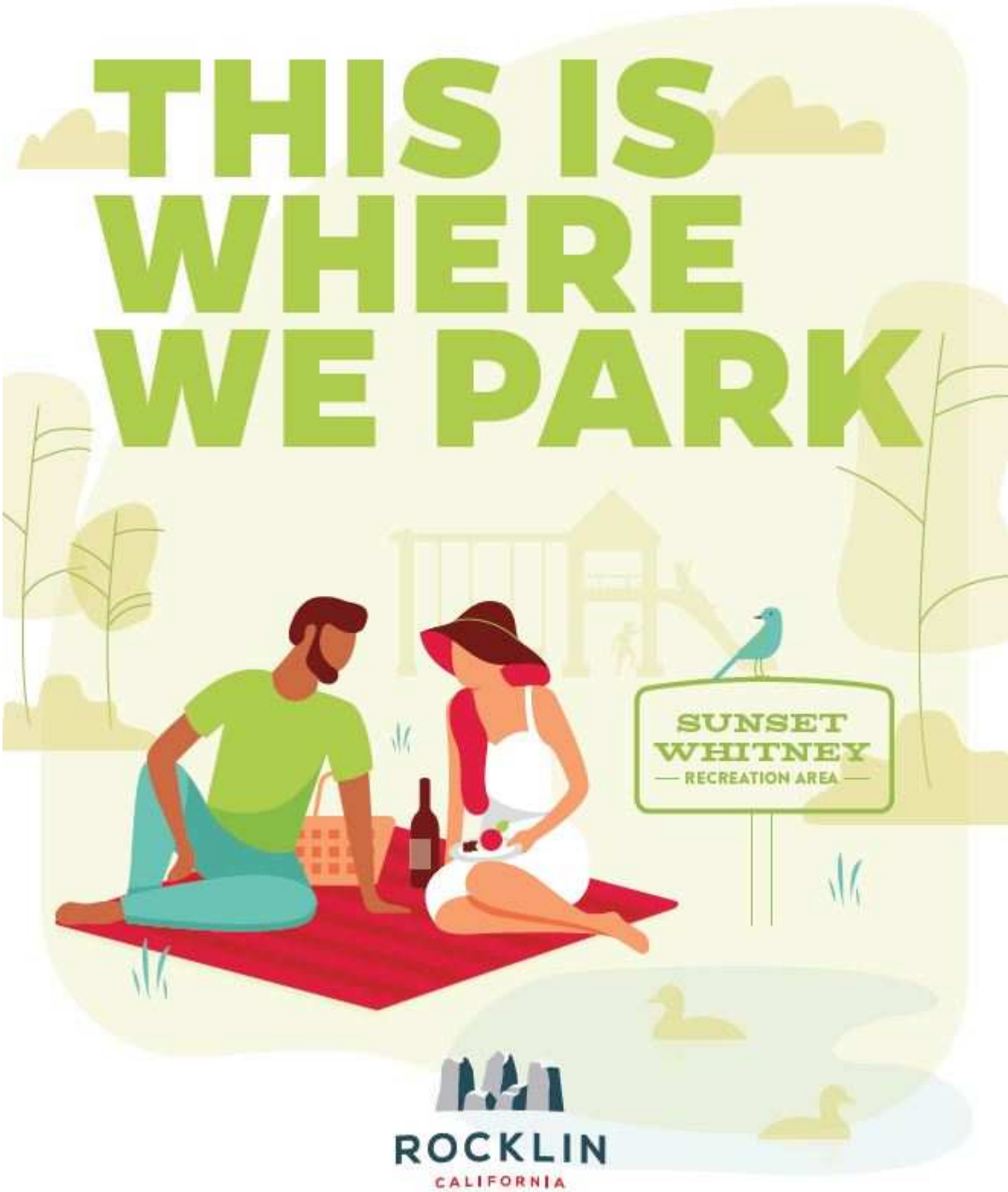
Parks, Trails and Open Space Communication Plan:

Bamboo, a communications consultant, tested several Parks and Recreation based slogans a few months ago to determine which best resonated with Rocklin residents. The test slogans included were:

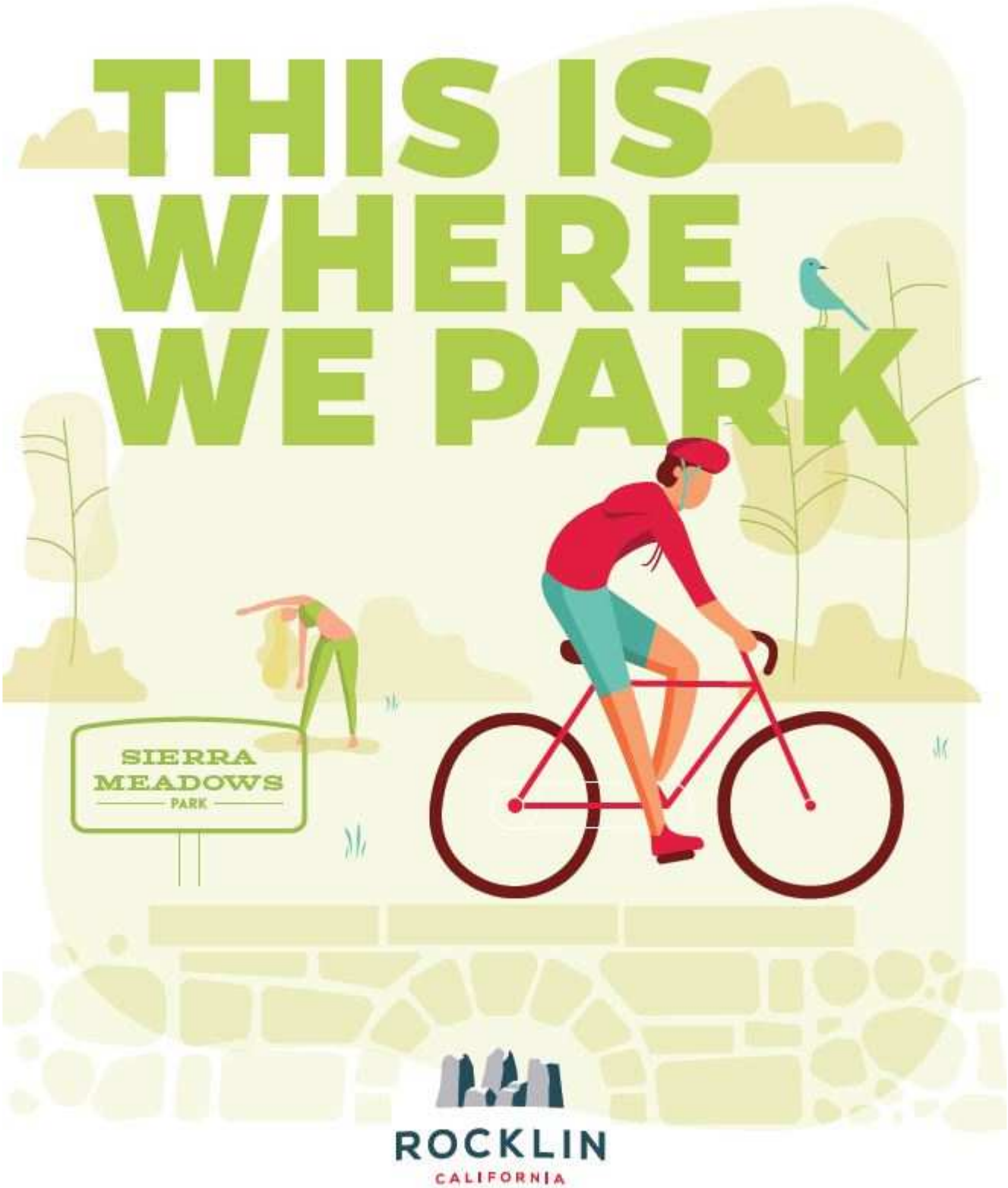
1. **This is where we park.** - Imagine having a ten-acre backyard. In Rocklin, the possibilities are right around your corner
2. **Your life. Here.** - You've got your phone and laptop, and not a minute goes by that you aren't connected... but are you still lonely?
3. **Your park. Your perk.** - Did you know your property value might be 20% higher because of what you have around the corner?

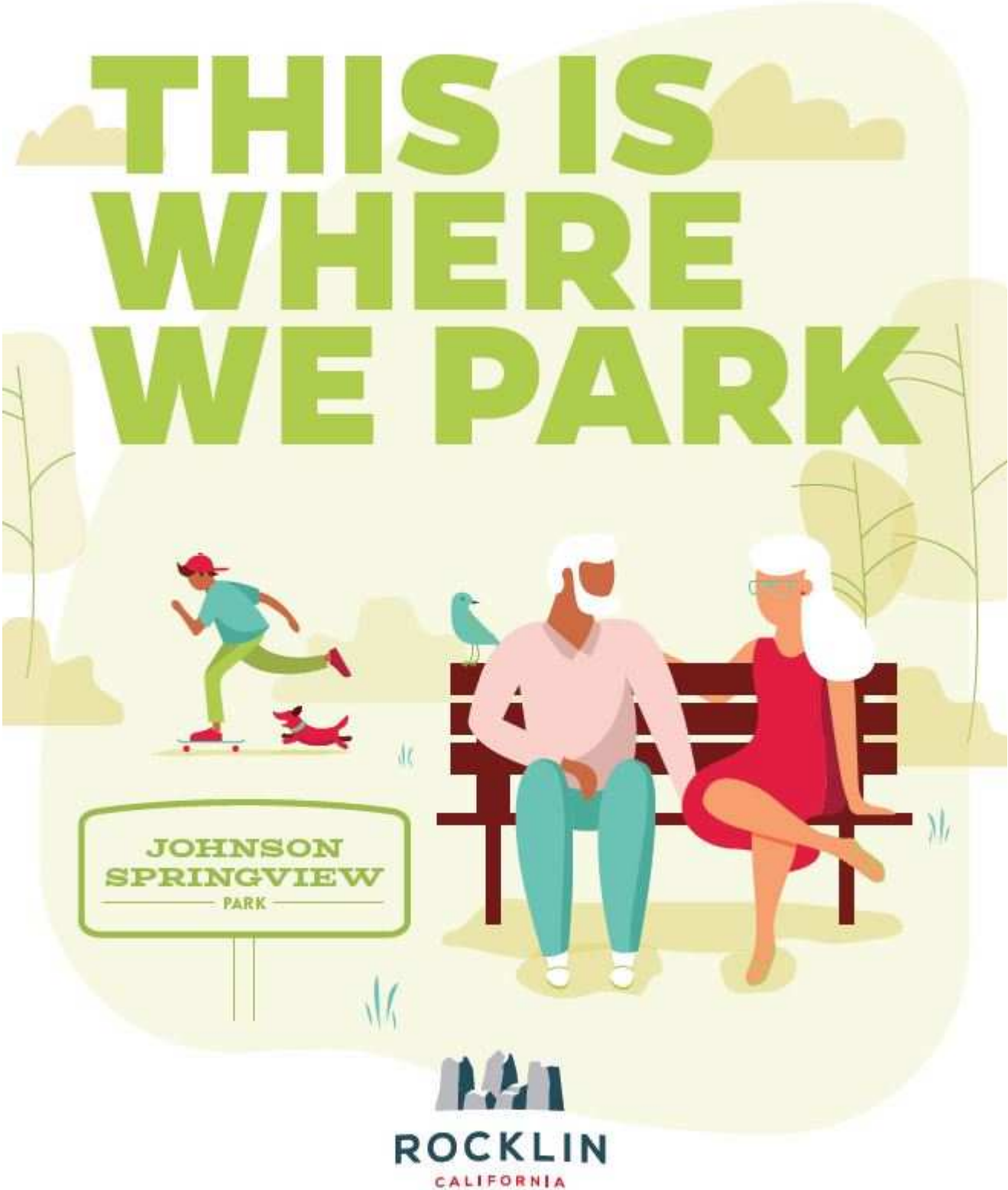
The slogan with the highest reported impact was "This is where we park" which received a 30% higher click-through rate to the parks website. Based upon this feedback, the Bamboo marketing team began creating graphic design images to accompany the "This is where we park" marketing plan. Initial graphics have been provided to staff for review and are attached:













ROCKLIN
CALIFORNIA

Parks, Recreation and Arts Commission Report

Subject: Lot 48B (Pernu II) and Lot 54 (Willard Park)

Submitted by: Sarah Novo, Parks Manager

Date: July 11, 2018

Department: Parks and Recreation

Staff Recommendation:

- Informational Only. No Action necessary.

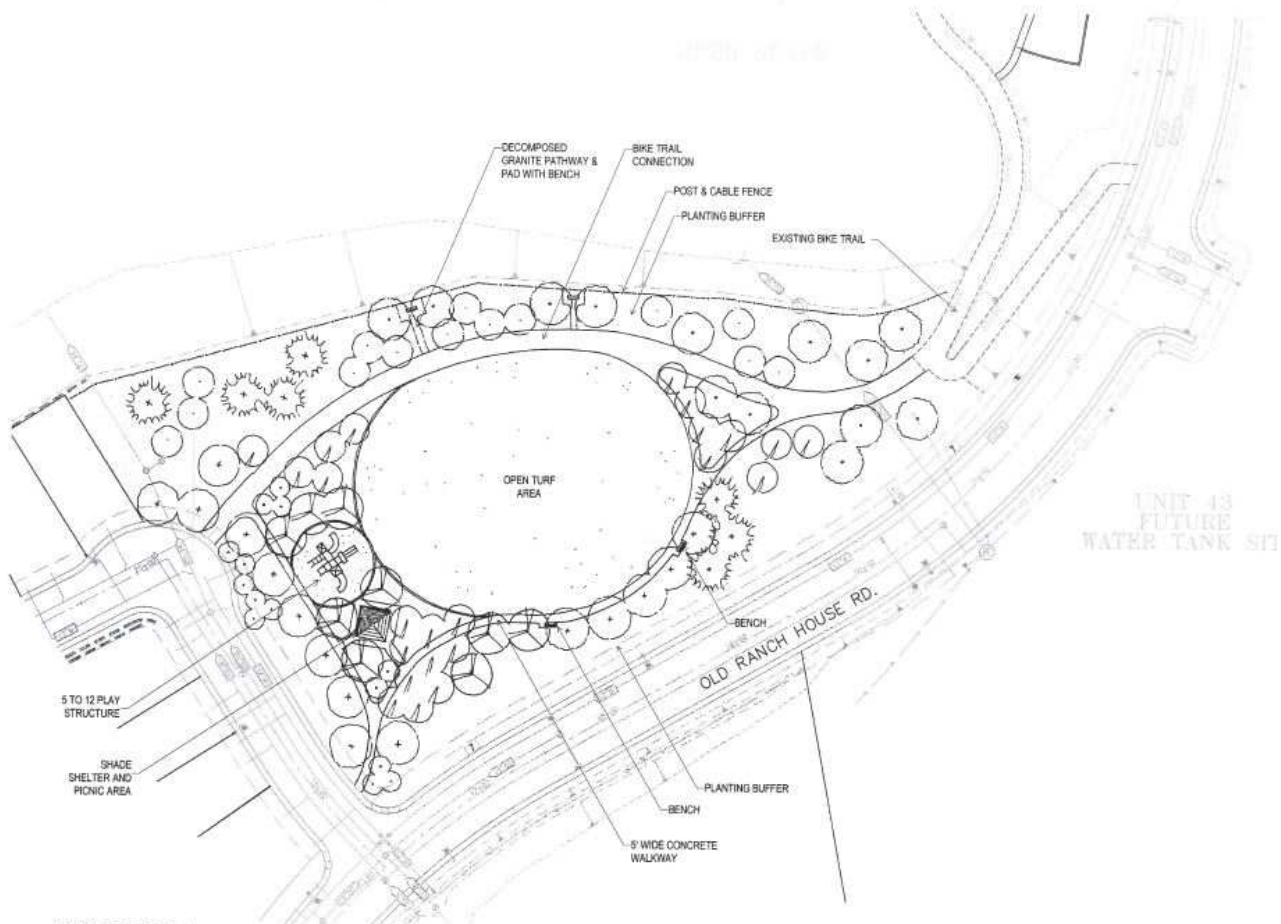
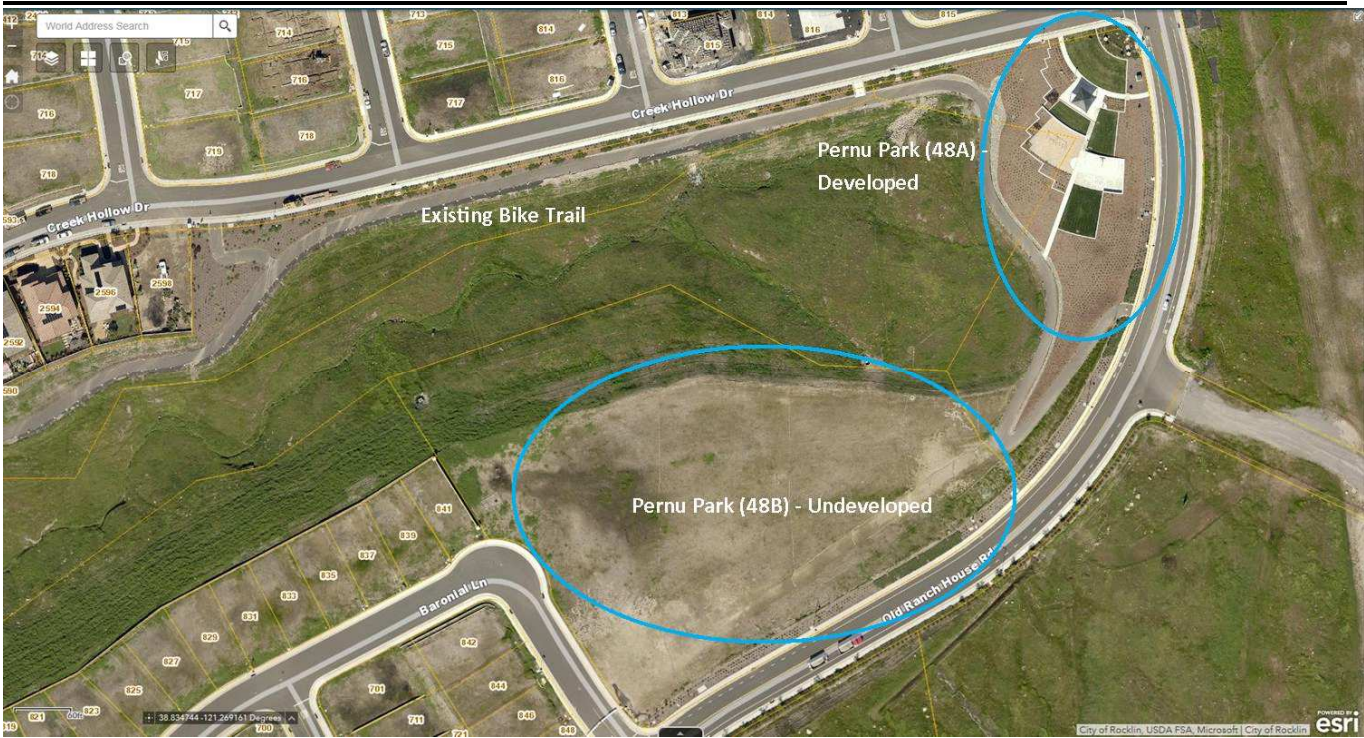
BACKGROUND: Whitney Ranch Park Sites 48B and 54

Staff has been approached by the master developers of Whitney Ranch to begin discussions of the development of the last remaining park sites. The developers are seeking input soon so that they can begin construction next spring. Staff has received the attached preliminary plans for review.

Park Site 48B (Pernu Phase II)

Park Site 48B (approx. 3.9 acres) is an extension of the existing Pernu Park (approx. 1.07 acres). The master plan for the developed portion of Pernu Park (48A) did not include 48B as it was unknown at the time how this property would be ultimately used. Some thoughts for this space as mentioned in the subdivision improvement – turn key park agreement included a private recreational facility owned and maintained by the Whitney Ranch Homeowners Association, while later thoughts suggested that this space may be better suited as a trailhead or park space. As a clubhouse for the Whitney Ranch community was constructed and is existing nearby, developers are now proposing developing lot 48B as additional park space which allows for connection to Pernu Park, the existing open space and Class 1 bike trail that extends approximately one mile, and connecting this park space to Whitney Park and Whitney High School. Preliminary discussions have been to utilize 48B as a transition between the developed portion of the park and the trail. The developers were aware of the city's emphasis on trails based on the consistent feedback from our citizens and felt this site provided a good opportunity to complement the existing trail and enhance the city's trail system. Staff have also received feedback from the community with regard to the placement of a children's play structure for toddlers and children 5-12 to enjoy since Pernu Park features are primarily geared toward older children, teens and adults.

Parks and Recreation Commission Report
July 11, 2018
Page 2



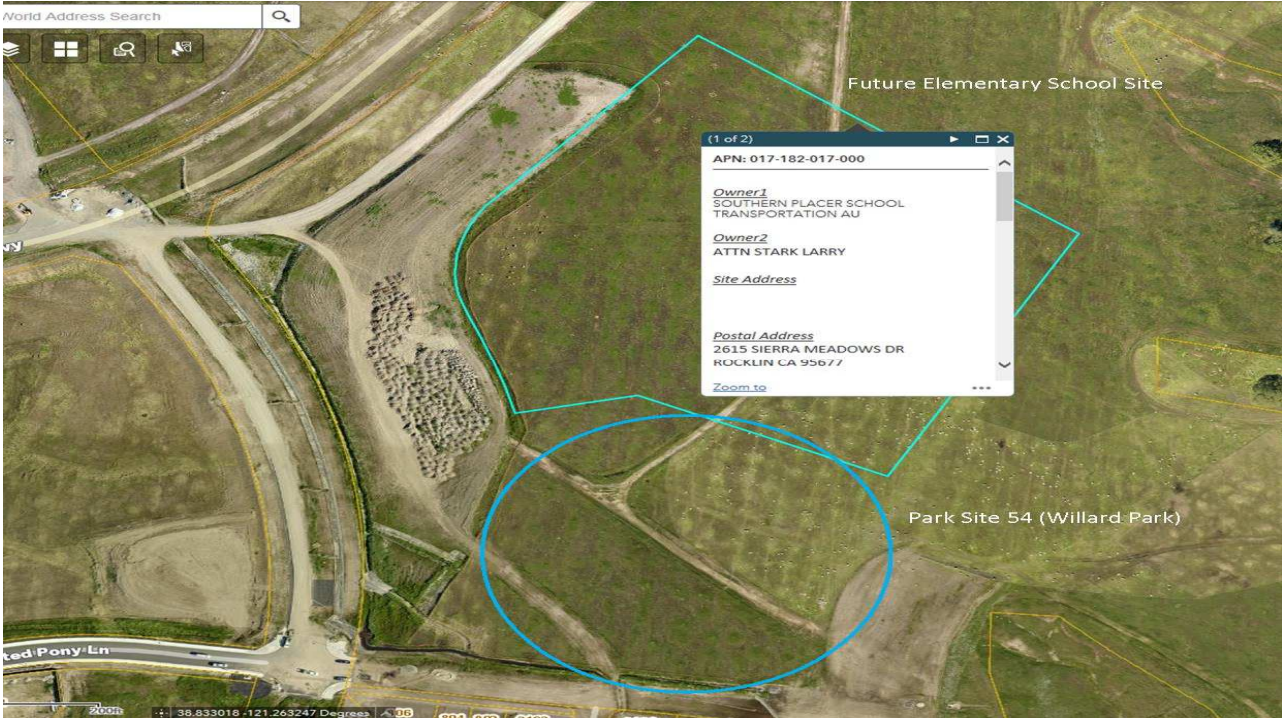
CONCEPT A
WHITNEY RANCH LOT 48B PARK
ROCKLIN, CA

Preliminary Landscape Plan

SCALE 1"=300'

Park Site 54 (Willard Park)

This park site will be adjacent to a proposed elementary school site. Preliminary discussions with the developer anticipate that this 4.7 acres park site will include a large expanse of level turf to accommodate activities such as soccer, lacrosse, grass volleyball or other sports as well as a covered picnic area and a children’s play area with ADA components. Previous Council action designated that this park site will be called Willard Park.



- LEGEND**
- A - PROPOSED CONNECTION TO NEIGHBORING SCHOOL.
 - B - PLAY STRUCTURE AREA.
 - C - MIX OF EVERGREEN AND DECIDUOUS TREE TO PROVIDE YEAR LONG INTEREST AND SCREENING.
 - D - LARGE OPEN TURF PLAY AREA.
 - E - EVERGREEN TREES TO PROVIDE YEAR LONG SCREENING TO NEIGHBORING LOTS. LAYERED LANDSCAPE AS UNDERSTORY.
 - F - DRINKING FOUNTAIN.
 - G - PROPOSED BENCH SEATING.
 - H - ENHANCED LANDSCAPE TREATMENT AT KEY CORNER.
 - I - PICNIC SHADE SHELTERS ((1) 20' x 20', (2) 18' x 15') WITH (7) PICNIC TABLES.
 - J - ENHANCED PAVING (EXPOSED AGGREGATE CONCRETE) TO DESIGNATE PICNIC AREA FROM SURROUNDING PATHS.
 - K - PEDESTRIAN PATHWAYS PROVIDE ACCESS THROUGHOUT PARK.
 - L - STREET TREES AND LOW STREETSCAPE PLANTING AS BOUNDARY TO PARK LIMITS.
 - M - LAYERED LANDSCAPE OF LOW PLANTS WITH CONTRASTING FORMS AND COLORS.



ROCKLIN Parks, Recreation and Arts Commission Report

Subject: Resolution 2018-166 declaring July 2018 as “Parks and Recreation” Month

Submitted by: Sarah Novo, Parks & Recreation Manager

Date: July 11, 2018

Department: Parks and Recreation

Staff Recommendation:

- Informational Only. No Action necessary.
-

BACKGROUND: The National Recreation and Park Association (NRPA) and the California Park and Recreation Society (CPRS), both commemorate the month of July as National Parks and Recreation Month. Since 1985, this annual designation has been an opportunity for agencies and community organizations to emphasize the importance and benefits of parks and recreation and how it has become woven into the fabric of our everyday lives. Parks and recreation touches more than 300 million people in this country. From the largest cities to the most rural communities, public parks and recreation agencies around the country are united in their mission to improve health and well-being, provide safe and enjoyable recreation opportunities, better the environment, and provide their respective communities with a higher quality of living.

The City of Rocklin has been enriched and made stronger through countless hours of dedication by volunteers, service groups, staff, organizations and members of the community. The combined efforts of each of these individuals and organizations have helped to establish the value that parks and recreation brings in making the Rocklin community a safe and enjoyable place to live, work and play. The City of Rocklin has made a substantial investment to support recreation programs and to create quality parks and open space areas for the Rocklin community. Through the Parks & Recreation Department, the City has provided a comprehensive parks and recreation system, with both passive and active features that address the needs of all residents, as well as income generating tourism elements for visitors. Each year, Parks & Recreation staff provide hours of organized recreation programming, while our extensive system of parks and open space facilities provide space for the public to engage in self-directed recreational activities, such as walking, biking, and personal exercise.

During “Parks and Recreation Month”, Parks & Recreation staff would like to highlight the economic, health and conservation benefits of the parks within our community. The proposed Resolution supports the notion that:

- The City should continue to maintain and provide adequate parks and recreation facilities to assure the high quality character and livability of the community;
- Passive open spaces remain a valuable component of a livable city;
- Youth programs are a major part of life for many families. Parks and recreation facilities and programs provide a safe refuge and a place to play, which helps to reduce at-risk behaviors. Youth participation in parks and recreation programs has been proven repeatedly to reduce the likelihood of youth becoming victims of violent crime, smoking, drinking alcohol, or use illegal substances/drugs;

*Parks and Recreation Commission Report**July 11, 2018**Page 2*

-
- Excellent parks and recreation programs promote healthy lifestyles and social interactivity for all ages, which help to maintain community cohesion and pride;
 - The City should continue to promote recreation and sport destination activities in Rocklin;
 - The City should continue to promote and provide recreational and social opportunities to all populations.

The following resolution was approved and passed unanimously by the Rocklin City Council at the June 26, 2018 council meeting:

RESOLUTION NO. 2018-166

RESOLUTION OF THE CITY COUNCIL
OF THE CITY OF ROCKLIN
DECLARING JULY 2018 AS "PARKS AND RECREATION" MONTH

The City Council of the City of Rocklin does resolve as follows:

Whereas, Parks and Recreation makes lives and communities better now and in the future; and

Whereas, it is established through statewide public opinion research, 98% of California households visit a local park at least once a year; two in three households visit a park once a month; 50% of households participate in an organized recreation program; and most park use is with family and friends; and

Whereas, residents value recreation as it provides positive alternatives for children and youth to reduce crime and mischief especially during non-school hours; it promotes the arts, it increases social connections; aids in therapy; and promotes lifelong learning; and

Whereas, residents value their parks for access to outdoor spaces for children and adults to play and be active; exercise and group sports; and

Whereas, parks provide access to the serenity and the inspiration of nature and outdoor spaces as well as preserve and protect the historic, natural and cultural resources in our community; and

Whereas, the residents of the City of Rocklin including children, youth, families, adults, seniors, businesses, community organizations, and visitors benefit from the wide range of parks, trails, open space, sports fields, tennis courts, facilities and programs provided by the City of Rocklin; and

Whereas, the City of Rocklin urges all its residents to recognize that parks and recreation enriches the lives of its residents and visitors as well as adding value to the community's homes and neighborhoods; and

Whereas, July is celebrated across the nation as Parks and Recreation Month,

THEREFORE BE IT RESOLVED, the City of Rocklin hereby proclaims July 2018 as Parks and Recreation Month and in doing so, urges all its citizens to use and enjoy its parks, trails, open space, facilities, and recreation opportunities.

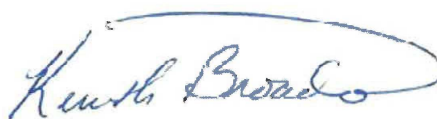
PASSED AND ADOPTED this 26th day of June, 2018, by the following vote:

AYES: Councilmembers: Janda, Gayaldo, Patterson, Broadway

NOES: Councilmembers: None

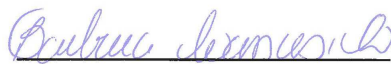
ABSENT: Councilmembers: Yuill

ABSTAIN: Councilmembers: None



Kenneth Broadway, Mayor

ATTEST:



Barbara Ivanusich, City Clerk