

Appendices

- 1-1 Stormwater Website Content
- 1-2 Stormwater Pollution Prevention, Annual Report and e-Biz Newsletter Website Content
- 1-3 Dry Season 2009 Press Releases, Comparison and Articles
- 1-4 Service Learning Project Information
- 1-5 World Ocean Day Promotion
- 1-6 One Big Bin Promotional Materials
- 1-7 Pollution Prevention & Stormwater Booth Tracking
- 1-8 Pollution Prevention Brochures
- 1-9 Scoop the Poop Program Materials
- 1-10 Cobblestone Students at Celebrate the Earth Festival
- 1-11 Local Partner Outreach Activities
- 2-1 Volunteer Tracking Spreadsheet
- 2-2 Adopt-An-Inlet Program Materials
- 2-3 Urban Forest Plan Description
- 2-4 WPWMA / Universal Waste Curbside Collection Website Content
- 2-5 Clean Up Day 2010 Flyer
- 2-6 Clean Up Day 2010 Collection Tracking
- 2-7 WPWMA Solid Waste Report
- 2-8 Community Service Day 2009 Flyer
- 2-9 Battery Collection Data
- 2-10 Council Resolution of Commendation
- 3-1 Environmental FAQ Website Content
- 3-2 Water Quality Test Results, Test Site Location Map
- 4-1 Sample Construction Design Standards and Conditions of Approval
- 4-2 Stormwater Enforcement and Reporting Processes
- 4-3 New Construction General Permit Publicity
- 4-4 Construction Erosion & Sediment Control Field Inspection Form
- 4-5 Stormwater Inspections Spreadsheet
- 5-1 Sample Conditions of Approval
- 5-2 Pre-Application LID Checklist
- 5-3 Sand & Oil Trap Inspection Checklist, Storm Drain Map
- 5-4 Sample Illicit Discharge & Detection Program Field Data Report
- 6-1 Household Hazardous Waste & Recycling Website Content
- 6-2 Discharging Pool & Spa Water Website Content
- 6-3 Recycling Website Content
- 6-4 Draft IPM Program

This page intentionally left blank.



[Home](#) | [About Rocklin](#) | [City Services](#) | [Calendar](#) | [FAQ](#) | [E-Resources](#) | [Contact Us](#)

[Go](#)

Most Visited



Online Guide for Residents



Online Guide for Businesses



Online Guide for Visitors



Online Guide to City Services

Virtual Rocklin

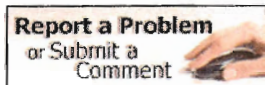


Current Agenda Packets

[Alarm Program](#)

[Municipal Code](#)

[E-Payment](#) | [RecDirect](#)



City Survey

What is your favorite City of Rocklin holiday event?

- Breakfast with Santa
- Santa Engine
- Santa Visits
- Theatre Productions
- Winter Wonderland

[Vote!](#)

City Council



Peter Hill Mayor
Scott Yuill Vice Mayor
Kathy Lund Councilmember
George Magnuson Councilmember
Brett Storey Councilmember

City News

18th Annual Rocklin Community Giving Tree to Benefit Local Children



We invite you to help bring a smile to the face of a child this holiday season. The 18th Annual Rocklin Community Giving Tree program is underway at the [Sunset Center](#) and [Community Development Department](#).

You are invited to select an "ornament", purchase the gift listed on the ornament and return the purchased gift by Monday, December 14, 2009, by 5 PM.

[More...](#)

2008-2009 NPDES Annual Report Now Available



Wondering what the City is doing to comply with its National Pollutant Discharge Elimination System (NPDES) stormwater permit? Curious about the status of the City's Stormwater Management Plan (SWMP)? Not sure what

either of these are?

[More...](#)

New Construction General Permit



Developers, Engineers, and Contractors: The new Construction General Permit was adopted September 1, 2009. The clock is ticking to get familiar with the new SWPPP and reporting requirements. Plus, there are some new acronyms to learn.

[More...](#)

Stay Updated on City Issues with the City Manager's Column



Do you want to keep updated about important issues in Rocklin? Read City Manager Carlos Urrutia's column on current community issues. The column is updated regularly. **Current Column: Emergency Preparedness is a City Priority** [November 2009]

[More...](#)

[City Manager's](#)

Calendar

December 2009						
Su	M	Tu	W	Th	F	Sa
		1	2	3	4	5
6	7	8	9	10	11	12
13	14	15	16	17	18	19
20	21	22	23	24	25	26
27	28	29	30	31		
Today						

City Events

Thu., Dec 3, 2009

6:00 PM - 8:00 PM
 Cancelled - Building Appeals Board Meeting

Fri., Dec 4, 2009

All Day Event
 City Administrative Offices Closed

Sat., Dec 5, 2009

7:30 AM - 12:00 PM
 Breakfast with Santa

[More Events...](#)


Cool Clicks



Economic Stimulus Sign Program of 2009
[View Sign Program Details](#)

At a Glance

2009 Employment	24,000
2009 Labor Force	26,100
2009 Unemployment Rate	8.1%

 [Code of Ethics](#)

**Singing, Dancing Show at Winter Wonderland
December 16**



The City of Rocklin presents a spectacular singing and dancing Christmas celebration Wednesday, December 16, 2009, from 7:00 p.m. - 8:00 p.m. at the [Sunset Center](#). Advance tickets are \$8, available for purchase at the Sunset Center. Tickets

are \$10 at the door.

[More...](#)

**City of Rocklin's Theatrical Production of Annie,
December 11-20**



Catch the City of Rocklin's Theatrical Production of *Annie*, December 11-20, 2009, at Finnish Temperance Hall. Tickets are \$12 per person and are available for purchase one month in advance at the Rocklin [Sunset Center](#), 2650 Sunset Blvd.

[More...](#)

[Archives...](#)

2009 Population	54,754
2008 Median Age	35.2
2008 Median Household Income	\$84,508
2009 Median Home Price	\$295,000

Rocklin Weather

[5-Day Forecast](#) | [More Weather](#)

[Job Openings](#)

[RFP & Bid Notices](#)

[Council Agenda / Minutes](#)

[Public Hearing Notices](#)

[Recreation Guide](#)

[Maps and Directions](#)



© City of Rocklin, 3970 Rocklin Road, Rocklin, CA, 95677 | Placer County
Phone 916.625.5000 | Fax 916.625.5095 | TTY 916.632.4013

[Website Comments & Questions](#) | [Privacy Policy](#) | [Low-Graphics Version](#)





Home | About Rocklin | City Services | Calendar | FAQ | E-Resources | Contact Us

Go

Homepage > ... > Public Works > Publications & Forms > NPDES Annual Report

Email Print

- Online Guide for Residents
- Online Guide for Businesses
- Online Guide for Visitors
- Online Guide to City Services

- About Public Works
- Current Projects
- Events
- Get a Permit
- Landscaping, Creeks & Open Space
- Pollution Prevention
- Publications & Forms
- Report a Problem
- Streets & Drains
- Traffic, Lights & Signs

NPDES Annual Report



The National Pollutant Discharge Elimination System (NPDES) **annual report to the California Regional Water Quality Control Board** (SWRCB). Rocklin, in addition to other Placer County municipalities, submits this report to address its stormwater management program.

- [NPDES Annual Report - 2008/2009 Part 1](#)
- [NPDES Annual Report - 2008/2009 Part 2 Append 1-1 to 1-2](#)
- [NPDES Annual Report - 2008/2009 Part 3 Append 1-3 to 1-5](#)
- [NPDES Annual Report - 2008/2009 Part 4 Append 1-6 to 2-7](#)
- [NPDES Annual Report - 2008/2009 Part 5 Append 3-1 to 6-4](#)
- [NPDES Annual Report - 2007/2008](#)
- [NPDES Annual Report - 2006/2007](#)
- [NPDES Annual Report - 2005/2006](#)
- [NPDES Annual Report - 2004/2005](#)
- [NPDES Annual Report - 2003/2004](#)
- [SWMP \(Storm Water Management Plan\)](#)

Questions?

If you have questions, requests or suggestions contact Public Works at 916.625.5500 or by email at [Access Rocklin](#).





Home | About Rocklin | City Services | Calendar | FAQ | E-Resources | Contact Us Go

Homepage > Guide to City Services > Public Works > Pollution Prevention

Email Print

Online Guide for Residents

Online Guide for Businesses

Online Guide for Visitors

Online Guide to City Services

Stormwater Pollution Prevention

Stormwater pollution prevention is everyone's responsibility, including contractors, residents and merchants in the food service industry. Make sure that you are doing your part.



NEW CONSTRUCTION GENERAL PERMIT

Changes in Storm Water Pollution Prevention Reporting Requirements

Attention Developers, Engineers and Contractors: The new Construction General Permit was adopted September 1, 2009. The clock is ticking to get familiar with new SWPPP and reporting requirements. Plus, there are some new acronyms to learn.

The new permit goes into effect on July 1, 2010, and there are filing deadlines on or before that date. If you missed the regional workshop held recently in Rocklin, you can view the presentation by clicking the following link to get some basic information about the changes:

- [**Interwest PowerPoint Presentation**](#)
- [**Pollution Prevention Information for Contractors**](#)
- [**Central Valley Regional Water Quality Board Website**](#)

ADOPT-AN-INLET PROGRAM



Scout troops, classrooms, religious and service groups, families, and businesses...

You can help keep Rocklin's creeks, streams, and open space clean and healthy by volunteering to mark, monitor, and maintain a storm drain inlet in your neighborhood, near your business or school.

The City will supply you or your group with safety equipment. In return, you are asked to periodically report your activities. Download the following documents to start your adoption process.

- [**Adopt-an-Inlet Request Form**](#)
- [**Adopt-an-Inlet Program & Volunteer Guidelines**](#)
- [**Adopt-an-Inlet Agreement Form**](#)
- [**Adopt-an-Inlet Volunteer Release Form**](#)
- [**Adopt-an-Inlet Volunteer Reporting Form**](#)

Curious about the status of the City's Stormwater Management Plan (SWMP)? Not sure what it is?

Then check out this year's NPDES Annual Report to find out! Chapters 1 and 2 are updates on Public Education and Outreach and Public Participation. Chapters 3 through 6 report on the nut

of operational activities that ensure the City's ongoing compliance with our stormwater permit as regulated by the State Water Resources Control Board and authorized by the federal Clean Water Act.

2009 NPDES Annual Report
Central Valley Regional Water Quality Board Website
State Water Resources Control Board Municipal Permits
Environmental Protection Agency's NPDES

POLLUTION PREVENTION TIPS

- **For Contractors**
- **For Food Service**
- **For Residents**
- **Household Hazardous Waste & Recycling**
- **Pet Waste**
- **Pool Water**

WATER QUALITY

The City of Rocklin tests the water quality in the five creeks and streams within the City limits. We take samples every four months and track the results so we can monitor the levels of harmful constituents (pollution) in the Dry Creek and Pleasant Grove watersheds.

To see if there is a testing station near your home, school, or place of business, please click on the link below to see the map:

- **Water Quality Test Locations**

- About Public Works ▶
- Current Projects
- Events
- Get a Permit ▶
- Landscaping, Creeks & Open Space ▶
- Pollution Prevention ▶
- Publications & Forms ▶
- Report a Problem
- Streets & Drains ▶
- Traffic, Lights & Signs ▶

You might also be interested in...

- **National Pollution Discharge Elimination System (NPDES) Annual Report**
- **California Water Board Erase the Waste**
- **EPA The Solution to Stormwater Pollution**
- **SC Stormwater Management for Auto Recyclers**
- **Report a Problem**



© City of Rocklin, 3970 Rocklin Road, Rocklin, CA, 95677 | Placer County
 Phone 916.625.5000 | Fax 916.625.5095 | TTY 916.632.4013



[Website Comments & Questions](#) | [Privacy Policy](#) | [Low-Graphics Version](#)

ISSUE
20
 Winter/Spring
 2010

Rocklin e-Biz Newsletter

Economic & Redevelopment News

City of Rocklin Website | Email the e-Biz to a Friend

Go to

- Home
- The Region
- City Corner
- News in Brief
- Development
- Redevelopment
- Resources

@ **Newsletter Signup**
 e-Biz news delivered to your email

SUBSCRIBE

Print out the latest version of the e-Biz newsletter or browse the archives.

An Award-Winning Publication honored by the Public Relations Society of America in Northern California



CITY CORNER

State of the City Address

Rocklin City Manager Carlos Urrutia delivered the annual [State of the City Address](#) at the Rocklin Chamber of Commerce's luncheon held on February 26, 2010. Carlos presented information on the fiscal status of the City, development activity, City accomplishments, economic development plans and goals for the future. The 2010 State of the City Address, as well as previous State of City Addresses, can be heard on-line. For more information, call 916.625.5560.



Draft EIR General Plan Update

The draft EIR on the City of Rocklin General Plan update will be available by early May 2010. Contact the Planning Division at 916.625.5160 to be notified when the draft EIR is available for a 45-day public review.

Renew City of Rocklin Business License Online

The City of Rocklin has launched a new web application that enables most businesses to renew an existing business license online. Businesses also have the opportunity to update business information during this process. To renew your business license online, you must have your account number (business license number) and the online renewal pin number found on your renewal form. Once you have this information in hand, simply [renew your license online](#).

2010 City Development Fee Schedule

The [fee schedule](#) lists all community development fees charged by the City of Rocklin, and is now available on the [City's website](#).

Rocklin Website Award

Rocklin's website was awarded the 2009 Business Excellence Award by the Rocklin Chamber of Commerce at their ceremonies, held in the very accommodating Mercedes Benz showroom floor on December 11, 2009. Rocklin was awarded 1st place among two other candidates nominated for the award. Congratulations to Dayna Amboy for a continued job well done! One of the most convenient methods used by businesses and future residents in considering whether they relocate to a community is access to city websites. Maintaining a thorough website that provides up-to-date information, such as demographics, growth potential, community amenities, business opportunities, etc., are essential for a city to be competitive in its search for new businesses, as well as the retention of existing corporate businesses.

Storm water Pollution Prevention - Be Part of Rocklin's Pollution Solution

(Part 1 of a new multi-part column)

Every business in Rocklin can help promote clean storm water runoff and healthy creeks and streams! What simple things can you do?

1. Practice good housekeeping!
 - Make sure all your garbage gets into the dumpster and close the lid and enclosure gate every time you take the garbage out.
 - Always clean up spills inside and outside the trash enclosure - rain and irrigation over-spray can send the spill down the drain.
 - Practice industry standards of good housekeeping for food service operations.
2. Watch this column for more tips and information.
3. If you can't wait, please check out the City's [Pollution Prevention](#) webpage for information and programs in which you can get involved.

Quarterly Economic Indicators

Unemployment Rate

	Current	Year Ago
Rocklin	8.4%	7.0%
Placer County	11.6%	9.8%
California	12.8%	10.7%
United States	9.7%	8.1%



Source: California Employment Dev. Dept., Bureau of Labor Statistics 2.10

Note: Current February data is preliminary

Median Home Price

	February 2010	February 2009	% Change
Rocklin	\$265,000	\$320,000	-17.19%
Placer County	\$286,000	\$315,000	-9.21%
California	\$279,840	\$245,230	-14.11%

Source: California Association of Realtors, 3.10

Development Activity

**2010
Year-to-
Date*** **2009**

Commercial Permits	3	33
Commercial Valuation	\$470K	\$10.6M

Non-residential Space in Sq. Ft. **0** **41,333**

Office/Flex	0	41,242
Retail Commercial	0	0
Warehouse/Industrial	0	0
Public/Institutional	0	91

*City Of Rocklin, 2010
Note: Numbers do not include other buildings*

Vacancy Rates

	Roseville/Rocklin*		Sacramento Region	
	2009 Q4	2008 Q4	2009 Q4	2008 Q4
Office	32.5%	28.1%	21.4%	16.3%
Retail	16.7%	8.3%	14.6%	8.1%
Industrial*	16.1%	11.4%	11.5%	8.3%

*Source: CBRE, 2009, Q4.
Notes: * Industrial includes Lincoln (Roseville/Rocklin/Lincoln).*

Appendices

- 1-1 Stormwater Website Content
- 1-2 Stormwater Pollution Prevention, Annual Report and e-Biz Newsletter Website Content
- 1-3 Dry Season 2009 Press Releases, Comparison and Articles
- 1-4 Service Learning Project Information
- 1-5 World Ocean Day Promotion
- 1-6 One Big Bin Promotional Materials
- 1-7 Pollution Prevention & Stormwater Booth Tracking
- 1-8 Pollution Prevention Brochures
- 1-9 Scoop the Poop Program Materials
- 1-10 Cobblestone Students at Celebrate the Earth Festival
- 1-11 Local Partner Outreach Activities
- 2-1 Volunteer Tracking Spreadsheet
- 2-2 Adopt-An-Inlet Program Materials
- 2-3 Urban Forest Plan Description
- 2-4 WPWMA / Universal Waste Curbside Collection Website Content
- 2-5 Clean Up Day 2010 Flyer
- 2-6 Clean Up Day 2010 Collection Tracking
- 2-7 WPWMA Solid Waste Report
- 2-8 Community Service Day 2009 Flyer
- 2-9 Battery Collection Data
- 2-10 Council Resolution of Commendation
- 3-1 Environmental FAQ Website Content
- 3-2 Water Quality Test Results, Test Site Location Map
- 4-1 Sample Construction Design Standards and Conditions of Approval
- 4-2 Stormwater Enforcement and Reporting Processes
- 4-3 New Construction General Permit Publicity
- 4-4 Construction Erosion & Sediment Control Field Inspection Form
- 4-5 Stormwater Inspections Spreadsheet
- 5-1 Sample Conditions of Approval
- 5-2 Pre-Application LID Checklist
- 5-3 Sand & Oil Trap Inspection Checklist, Storm Drain Map
- 5-4 Sample Illicit Discharge & Detection Program Field Data Report
- 6-1 Household Hazardous Waste & Recycling Website Content
- 6-2 Discharging Pool & Spa Water Website Content
- 6-3 Recycling Website Content
- 6-4 Draft IPM Program

This page intentionally left blank.

Stormwater Management Program

Press release comparisons

2008-2009 and 2009-2010

2008-2009

On the City’s website, the Dry Season 2009 news article generated some significant readership according to the City’s Website Administrator. Following are the statistics for the article, which was posted May 22, 2009. (Note: “Views” means how many times the article was read.)

Residents, Businesses Can Help Improve Local Water Quality During the Dry Season

<http://www.rocklin.ca.us/news/displaynews.asp?NewsID=966&targetid=1>

MAY Views: 56
JUNE Views: 130

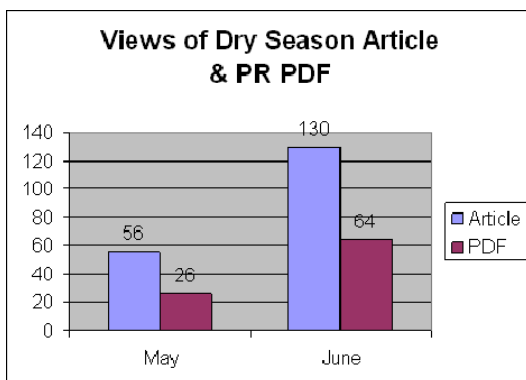
(Note: On average, people who viewed this article read it for two and a half minutes. This amount of time indicates they were actually reading the content versus just clicking on it and clicking away).

The full press release PDF was linked at the bottom of the article. Many people clicked through to this PDF from the article.

Press Release PDF

<http://www.rocklin.ca.us/civica/inc/displayblobpdf.asp?blobID=11621>

MAY Views: 26
JUNE Views: 64



In total, the News Story and the Press Release had a combined 276 views, most of which were long enough that the viewer read the text and did not quickly click through.

2009-2010

Residents, Businesses Can Help Improve Local Water Quality During the Dry Season, published 6/14/2010

<http://www.rocklin.ca.us/news/displaynews.asp?NewsID=1158&targetid=1>

June Views: 92

This news item was very sticky - the average person viewed this for more than 3.5 minutes (3.62 minutes).

The PDF at the bottom did not show up in our stats (our server is only capable of capturing detailed data on the most popular 2,000 pages).

Residents, Businesses Can Help Improve Local Water Quality During the Wet Season, published 1/19/2010

<http://www.rocklin.ca.us/news/displaynews.asp?NewsID=1060&targetid=1>

January Views: 125

This news item was very sticky - the average person viewed this for more than 2.5 minutes (2.9 minutes).

The full press release PDF was linked at the bottom of the article. Many people clicked through to this PDF from the article.

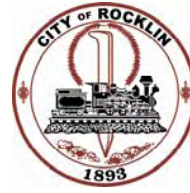
Press Release PDF

<http://www.rocklin.ca.us/civica/inc/displayblobpdf.asp?blobID=12186>

January Views: 32

CITY OF ROCKLIN

PRESS RELEASE



For Immediate Release

Date 6/15/10

Contact: Kent Foster, Director of Public Works, 916-625-5500
Dara Dungworth, Stormwater Coordinator, 916-625-5160

ROCKLIN RESIDENTS AND BUSINESSES CAN IMPROVE LOCAL WATER QUALITY DURING THE DRY SEASON

As the rainy season finally comes to a late close for Spring 2010, it is time to consider ways Rocklin residents and business can improve water quality in our local creeks and streams during the dry season. Small changes in household chores, for example, can make a difference! Water, debris, and chemicals that go down the gutter and into the street and parking lot drains *do not go to a wastewater treatment plant*—it all flows directly into our creeks and streams. Rocklin's waterways are salmon and trout habitat and are part of the Dry Creek and Pleasant Grove watersheds.

Conserve water

- Use automatic irrigation systems to water landscaping for shorter periods only as often as necessary.
- Only water landscaping in the early morning or after dark to reduce evaporation.
- Be sure not to over water—over watering can send additional sediment and chemicals into the storm drain system that contaminate the creeks and streams.
- For more information visit **Placer County Water Agency's Water Use Efficiency** webpage at: <http://www.pcwa.net/level3/efficiency.html>.
- Plant native and drought-tolerant plants. For information about these plants and where to buy them visit **The Garden Spot** at <http://www.bewaterwise.com>. For an online **California native plant landscape design tool** visit <http://www.mynativeplants.com/site>.

Use landscaping chemicals carefully

- Apply lawn care and other landscape chemicals per package instructions.
- Do not over water after using chemicals—more of the chemicals are washed into the storm drain system and creeks.
- Choose alternatives to control pests such as lady bugs and non-toxic chemicals.
- For more information visit the **Our Water Our World** website at www.ourwaterourworld.org.

Properly dispose of pet waste

- Pick up after your pet *every* time—bacteria in pet waste can make people sick and pollute our creeks and streams.
- Re-use plastic bags or purchase specialty bags from your local pet store.
- Throw pet waste in a garbage can or flush it down a toilet—never wash it into landscaping or the gutter.

Properly dispose of household waste

- Always throw garbage in a designated receptacle.
- Recycle whenever possible.
- Sweep driveways and sidewalks instead of hosing them off. Put leaves and grass clippings in the garbage or compost.
- Never rinse yard-care equipment or flush debris into the gutter.
- Never flush paint, household chemicals, solvents, and similar hazardous household waste into the gutter.
- Dispose of hazardous household waste by
 - taking it to a City sponsored Universal Waste event, for more information visit the **City's Recycling** webpage at http://www.rocklin.ca.us/residents/new_to_the_city/recycling.asp.
 - taking it to the Materials Recovery Facility (MRF) run by the Western Placer Waste Management Authority (WPWMA), for more information visit the **WPMPA** website at <http://www.wpwma.com>.

Recycle

- In Rocklin, you can throw recyclables directly in your garbage toter or can—no need to sort or separate!—they are diverted out of the landfill at the MRF. For more information go to www.OneBigBin.com
- Used household batteries can not go in the garbage! Bring them to a local collection site and look for the green collection tubes. For a list of collection sites visit the **City's Recycling** webpage at http://www.rocklin.ca.us/residents/new_to_the_city/recycling.asp

Properly drain swimming pools

- Do not drain swimming pools or spas directly into the gutter—even small amounts of chlorine can upset the balance of plant and animal life in creeks and streams.
- For more information visit the **City's Pool Water** webpage at http://www.rocklin.ca.us/government/works/pollution/pool_water.asp.

Do Even More

- Come out to Rocklin's annual **Community Service Day** in the Fall. Get more information at <http://www.rocklin.ca.us/communityserviceDay/>.
- Participate in annual **Creek Week** activities. Get more information at <http://www.creekweek.org/>.
- **Volunteer** individually or as a group any time of the year by contacting Dara Dungworth at 916-625-5160 or dara.dungworth@rocklin.ca.us
- **Adopt-an-Inlet**. Great for classrooms, Scout Troops, church and service organizations, and businesses! Access "adoption paperwork" at <http://www.rocklin.ca.us/government/works/pollution/default.asp>
- Visit the **STAR ECO Station's Storm Drain Exhibit** and explore a life-size stormwater pipe! Visit their website at <http://www.ecostation.org/>.
- **Report illegal dumping** by calling the Public Works Department at 916-625-5500 or by going to the City's webpage (<http://www.rocklin.ca.us/government/works/report.asp>) and sending an email message.

CITY OF ROCKLIN

PRESS RELEASE



For Immediate Release

Date 10/8/09

Contact: Kent Foster, Director of Public Works, 916-625-5500
Dara Dungworth, Stormwater Coordinator, 916-625-5160

ROCKLIN RESIDENTS AND BUSINESSES CAN IMPROVE LOCAL WATER QUALITY DURING THE WET SEASON

As the 2009-2010 rain approaches, it is time to consider ways Rocklin residents and business can improve water quality in our local creeks and streams during the upcoming wet season. Storm water, debris, and chemicals that go down the gutter and into the street and parking lot drains *do not go to a wastewater treatment plant*—it all flows directly into our creeks and streams. Rocklin's waterways are salmon and trout habitat and are part of the Dry Creek and Pleasant Grove watersheds.

Conserve water

- Use automatic irrigation systems to water landscaping for shorter periods only as needed when the weather is cooler and the days are shorter.
- Remember to set your irrigation system to Off or Rain when the rainy weather starts in earnest.
- As always, be sure not to over water—over watering can send additional sediment and chemicals into the storm drain system that contaminate the creeks and streams.
- For more information visit **Placer County Water Agency's Water Use Efficiency** webpage at: <http://www.pcwa.net/level3/efficiency.html>.
- Plant native and drought-tolerant plants. For information about these plants and where to buy them visit **The Garden Spot** at <http://www.bewaterwise.com>. For an online **California native plant landscape design tool** visit <http://www.mynativeplants.com/site>.

Use landscaping chemicals carefully

- Apply lawn care and other landscape chemicals per package instructions.
- Do not over water after using chemicals and do not use chemicals right before a rain is expected—more of the chemicals are washed into the storm drain system and creeks.
- Choose alternatives to control pests such as lady bugs and non-toxic chemicals.
- For more information visit the **Our Water Our World** website at www.ourwaterourworld.org.

Properly dispose of pet waste

- **Scoop the Poop!** All dogs in Rocklin receive a *free* Bags on Board pet waste bag canister when they get a new or renewed dog license. All dogs in Rocklin must be licensed. For more information visit the **City's Pet Waste** webpage at http://www.rocklin.ca.us/government/works/pollution/pet_waste.asp.

- Pick up after your pet *every* time—bacteria in pet waste can make people sick and pollute our creeks and streams.
- Throw pet waste in a garbage can or flush it down a toilet—never wash it into landscaping or the gutter.

Properly dispose of household waste

- Always throw garbage in a designated receptacle.
- Always sweep driveways and sidewalks instead of hosing them off. Put leaves and grass clippings in the green waste bin or compost.
- Never rinse yard-care equipment or flush yard waste or debris into the gutter.
- Never flush paint, household chemicals, solvents, and similar hazardous household waste into the gutter.
- After the holidays, take your undecorated, dry Christmas tree to a designated drop-off location. Check the **City's website** for details on locations closer to the holidays.
- Dispose of hazardous household waste by
 - taking it to a City-sponsored collection event. Watch for information on **Rocklin Clean Up Day** in April 2010 and check the City's website for additional community events this winter.
 - **donating** it to a school or charitable organization that is collecting it for a fundraiser.
 - taking it to the Materials Recovery Facility (MRF) run by the Western Placer Waste Management Authority (WPWMA), for more information visit the **WPMPA** website at <http://www.wpwma.com>.

Recycle

- In Rocklin, you can throw recyclables directly in the garbage—no need to sort or separate!—they are diverted out of the landfill at the MRF. For more information check out www.OneBigBin.com to see how it works.
- Used household batteries can not go in the garbage! Bring them to a local collection site and look for the collection tubes. For a list of collection sites visit the **City's Recycling** webpage at http://www.rocklin.ca.us/residents/new_to_the_city/recycling.asp

Properly drain swimming pools

- Do not drain swimming pools or spas directly into the gutter—even small amounts of chlorine can upset the balance of plant and animal life in creeks and streams.
- For more information visit the **City's Pool Water** webpage at http://www.rocklin.ca.us/government/works/pollution/pool_water.asp.

Do Even More

- Come out to Rocklin's annual **Community Service Day** on October 17. Get more information at <http://www.rocklin.ca.us/communityserviceDay/>.
- Participate in annual **Spring Creek Week** activities. Get more information at <http://www.creekweek.org/>.
- Volunteer individually or as a group with Citizens Involved Means Better Living, **CIMBL**, a local, grass-roots organization that picks up litter from Placer County roadways every month. Visit their website at <http://www.cimbl.org>.
- Contact Public Works to volunteer to **Adopt an Inlet**. Adopters can be families, Scout groups, churches, classrooms, businesses, anyone! Be a part of keeping Rocklin's waterways clean and healthy!

October 9, 2009

- Visit the **STAR ECO Station's Storm Drain Exhibit**. Visit their website at <http://www.ecostation.org/>.
- **Report illegal dumping** by calling the Public Works Department at 916-625-5500 or by going to the City's webpage (<http://www.rocklin.ca.us/government/works/report.asp>) and sending an email message.
- Check out the City of Roseville's **Green Living Workshops** at the Utility Exploration Center. Go to www.roseville.ca.us/explore.
- Volunteer to help with the **annual acorn harvest** and planting. The City is "growing" their native plant nursery and always needs extra hands to help care for the oak seedlings and other native sprouts. Contact Public Works to find out what is happening in the nursery.

How to keep water clean during rainy season

As the 2009-2010 rain approaches, it is time to consider ways Rocklin residents and business can improve water quality in our local creeks and streams during the upcoming wet season. Storm water, debris, and chemicals that go down the gutter and into the street and parking lot drains do not go to a wastewater treatment plant—it all flows directly into our creeks and streams. Rocklin's waterways are salmon and trout habitat and are part of the Dry Creek and Pleasant Grove watersheds.

Conserve water

Use automatic irrigation systems to water landscaping for shorter periods only as needed when the weather is cooler and the days are shorter.

Remember to set your irrigation system to Off or Rain when the rainy weather starts in earnest.

As always, be sure not to over water—over watering can send additional sediment and chemicals into the storm drain system that contaminate the creeks and streams.

For more information visit Placer County Water Agency's Water Use Efficiency Web page at:

<http://www.pcwa.net/level3/efficiency.html>.

Plant native and drought-tolerant plants. For information about these plants and where to buy them visit The Garden Spot at

<http://www.bewaterwise.com>. For an online California native plant landscape design tool visit <http://www.mynativeplants.com/site>.

Use landscaping chemicals carefully

Apply lawn care and other landscape chemicals per package instructions.

Do not over water after using chemicals and do not use chemicals right before a rain is expected—more of the chemicals are washed into the storm drain system and creeks.

Choose alternatives to control pests such as lady bugs and non-toxic chemicals.

For more information visit the Our Water Our World Web site at www.ourwaterourworld.org.

Properly dispose of pet waste

Scoop the Poop! All dogs in Rocklin receive a free Bags on Board pet waste bag canister when they get a new or renewed dog license.

All dogs in Rocklin must be licensed. For more information visit the city's Pet Waste Web site at

<http://www.rocklin.ca.us/government/works/pollution/pet-waste.asp>.

Pick up after your pet every time—bacteria in pet waste can make people sick and pollute our creeks and streams.

Throw pet waste in a garbage can or flush it down a toilet—never wash it into landscaping or the gutter.

Properly dispose of household waste

Always throw garbage in a designated receptacle.

Always sweep driveways and sidewalks instead of hosing them off. Put leaves and grass clippings in the green waste bin or compost.

Never rinse yard-care equipment or flush yard waste or debris into the gutter.

Never flush paint, household chemicals, solvents, and similar hazardous household waste into the gutter.

After the holidays, take your undecorated, dry Christmas tree to a designated drop-off location. Check the city's Web site for details on locations closer to the holidays.

Dispose of hazardous household waste by

taking it to a city-sponsored collection event. Watch for information on Rocklin Clean Up Day in April 2010 and check the city's Web site for additional community events this winter.

donating it to a school or charitable organization that is collecting it for a fund-raiser.

taking it to the Materials Recovery Facility (MRF) run by the Western Placer Waste Management Authority (WPWMA), for more information visit the WPMPA Web site at <http://www.wpwma.com>.

Recycle

In Rocklin, you can throw recyclables directly in the garbage—no need to sort or separate!—they are diverted out of the landfill at the MRF. For more information check out www.OneBigBin.com to see how it works.

Used household batteries can not go in the garbage! Bring them to a local collection site and look for the collection tubes. For a list of collection sites visit the city's recycling Webvpage at <http://www.rocklin.ca.us/residents/new—to—the—city/recycling.asp>

Properly drain swimming pools

Do not drain swimming pools or spas directly into the gutter—even small amounts of chlorine can upset the balance of plant and animal life in creeks and streams.

For more information visit the city's pool water Web site at <http://www.rocklin.ca.us/government/works/pollution/pool—water.asp>.

Do Even More

Participate in annual Spring Creek Week activities. Get more information at <http://www.creekweek.org/>.

Volunteer individually or as a group with Citizens Involved Means Better Living, CIMBL, a local, grass-roots organization that picks up litter from Placer County roadways every month. Visit their Web site at <http://www.cimbl.org>.

Contact Public Works to volunteer to Adopt an Inlet. Adopters can be families, Scout groups, churches, classrooms, businesses, anyone! Be a part of keeping Rocklin's waterways clean and healthy!

Visit the STAR ECO Station's Storm Drain Exhibit. Visit their Web site at <http://www.ecostation.org/>.

Report illegal dumping by calling the Public Works Department at 625-5500 or by going to the city's Web site (<http://www.rocklin.ca.us/government/works/report.asp>) and sending an e-mail message.

Check out the city of Roseville's Green Living Workshops at the Utility Exploration Center. Go to www.roseville.ca.us/explore.

Volunteer to help with the annual acorn harvest and planting. The city is "growing" their native plant nursery and always needs extra hands to help care for the oak seedlings and other native sprouts. Contact Public Works to find out what is happening in the nursery.

Keywords

[water](#), [Rocklin](#), [clean](#), [rainy season](#), [tips](#)

[Post a Comment](#)



E-mail this



Print this

Post a comment

Post comment

Characters Remaining: 1500

[Hazardous Waste](#)

Transportation and Disposal 24/7
Spill Response 800.988.4424
www.HCIENV.com

[Banana Hammock Pools](#)

Pool Cleaning & Repair "Keeping
you wet all year long!"
www.bananahammockpools.com

[Hazard Waste Disposal](#)

Pick Up & Disposal Of A Broad
Range Of Wastes. Safe Solutions-
Call Us!
www.Crystal-Clean.com



Ads by **Google**

Contents of this site are all Copyright © 2010, Gold Country Media. All rights reserved. Powered By: [Creative Circle](#) .

[Privacy Policy](#) [Terms of Service](#)

This page intentionally left blank.

Appendices

- 1-1 Stormwater Website Content
- 1-2 Stormwater Pollution Prevention, Annual Report and e-Biz Newsletter Website Content
- 1-3 Dry Season 2009 Press Releases, Comparison and Articles
- 1-4 Service Learning Project Information
- 1-5 World Ocean Day Promotion
- 1-6 One Big Bin Promotional Materials
- 1-7 Pollution Prevention & Stormwater Booth Tracking
- 1-8 Pollution Prevention Brochures
- 1-9 Scoop the Poop Program Materials
- 1-10 Cobblestone Students at Celebrate the Earth Festival
- 1-11 Local Partner Outreach Activities
- 2-1 Volunteer Tracking Spreadsheet
- 2-2 Adopt-An-Inlet Program Materials
- 2-3 Urban Forest Plan Description
- 2-4 WPWMA / Universal Waste Curbside Collection Website Content
- 2-5 Clean Up Day 2010 Flyer
- 2-6 Clean Up Day 2010 Collection Tracking
- 2-7 WPWMA Solid Waste Report
- 2-8 Community Service Day 2009 Flyer
- 2-9 Battery Collection Data
- 2-10 Council Resolution of Commendation
- 3-1 Environmental FAQ Website Content
- 3-2 Water Quality Test Results, Test Site Location Map
- 4-1 Sample Construction Design Standards and Conditions of Approval
- 4-2 Stormwater Enforcement and Reporting Processes
- 4-3 New Construction General Permit Publicity
- 4-4 Construction Erosion & Sediment Control Field Inspection Form
- 4-5 Stormwater Inspections Spreadsheet
- 5-1 Sample Conditions of Approval
- 5-2 Pre-Application LID Checklist
- 5-3 Sand & Oil Trap Inspection Checklist, Storm Drain Map
- 5-4 Sample Illicit Discharge & Detection Program Field Data Report
- 6-1 Household Hazardous Waste & Recycling Website Content
- 6-2 Discharging Pool & Spa Water Website Content
- 6-3 Recycling Website Content
- 6-4 Draft IPM Program

This page intentionally left blank.

City of Rocklin
 Stormwater Management Program
 RUSD Service Learning, Outreach, Education and Participation Project Tracking

PROJECT NAME	2009/2010 Participants
Adopt a Creek	31
Adopt an Inlet	97
Creek Clean Up	31
Acorn Adoption	77
Oak Tree Nursery Support	66
Watershed Health Presentation	273
Adopt-an-Inlet Presentation	176
Art Contest	75
Public Service Announcements (newspaper)	100

City of Rocklin
 Stormwater Management Program
 RUSD Service Learning, Outreach, Education and Participation Project Tracking

Breen

2009-2010

Teacher	Grade	No. of Kids	Date	Project Name	Outcome / Description	Contact for Next Year	Attended Council Commendation	AR BMP	AR Appendix
Julie Wright	3	22	Fall	Adopt an Acorn	3 Acorns sprouted! Planted seedlings in Breen Park to replace mitigation oaks that died	Y	Y		
Winter Hungerford	K	20	Fall	Adopt an Acorn	No acorns sprouted! Gave back rack and pots	Y			
Total		42							
Julie Wright	3	22	Spring	Adopt an Inlet	Staff presentation to class, ceremony/how to mark 1st inlet; 4 inlet marking & maintenance	Y			2.x & 2.x
Stacey Jackson	3	22	Spring	Adopt an Inlet	Staff presentation to class, ceremony/how to mark 1st inlet; 4 inlet marking & maintenance				2.x & 2.x
Mrs. Walters	3	22	Spring	Adopt an Inlet	Staff presentation to class, ceremony/how to mark 1st inlet; 4 inlet marking & maintenance				2.x & 2.x
Mrs. Wall	3	22	Spring	Adopt an Inlet	Staff presentation to class; awareness only--no "maintenance" of inlets				2.x & 2.x
Total		88							
Linda Wampler	5	25	April	Stormwater PSA	Staff presentation; Art contest and PSA published in Placer Herald	Y	Y		2.x
Patty Buback	5	25	April	Stormwater PSA	Staff presentation; Art contest and PSA published in Placer Herald				2.x
Allison Armstrong	5	25	April	Stormwater PSA	Staff presentation; Art contest and PSA published in Placer Herald				2.x
Total		75							
Linda Wampler	5	25	Spring	The Pawprints Student Newspaper	Quarterly student written and designed campus newspaper; Spring edition with 2 watershed health related articles; 'Nothing but rain down the drain' and 'Reduce, Reuse, Recycle and the fourth "R": Rethink'	Y			1.x
Total		25							
Grand Total		230							

City of Rocklin
 Stormwater Management Program
 RUSD Service Learning, Outreach, Education and Participation Project Tracking

Cobblestone Elementary

2009-2010

Teacher	Grade	No. of Kids	Date	Project Name	Outcome / Description	Contact for Next Year	Attended Council Commendation	AR BMP	AR Appendix
Cynthia Smith	6	31	Dec-Jun	Adopt an Inlet	Staff presentation; All 38 campus inlets marked and maintained;	Y	Y		
			Dec-Jun	Adopt a Creek	Litter pick up in Pebble Creek; Dec				
			4/17/10	Environmental Education Booth	Placer County Celebrate the Earth Day: water cycle display and model; bike recycling, enviro activities for kids (see poster)				2.x
			4/17/10	Stormwater Booth Support	Placer County Celebrate the Earth Day: students helped staff the City Stormwater Education Booth				
			Dec-Jun	Polystyrene Replacement Research	Find alternative cafeteria trays to replace the polystyrene with goals to start pilot project then roll out to entire school district				
				Total					
				Grand Total					

Total 31
 Grand Total 31

City of Rocklin
 Stormwater Management Program
 RUSD Service Learning, Outreach, Education and Participation Project Tracking

Rock Creek Elementary

2009-2010

Teacher	Grade	No. of Kids	Date	Project Name	Outcome / Description	Contact for Next Year	Attended Council Commendation	AR BMP	AR Appendix
Chris Anderson (2 classes)	4	66	5/25/10	Oak Tree Nursery Support	Staff presentation and thank you. Kids transplanted approx. 150 deep pot seedlings to 1-, 5-, 15-gal pots, planted approx. 300 sprouted acorns into empty deep pots; watershed health presentation	Y	N		2.x
Total		<u>66</u>							
Grand Total		<u><u>66</u></u>							

City of Rocklin
 Stormwater Management Program
 RUSD Service Learning, Outreach, Education and Participation Project Tracking

Rocklin Elementary

2009-2010

Teacher	Grade	No. of Kids	Date	Project Name	Outcome / Description	Contact for Next Year	Attended Council Commendation	AR BMP	AR Appendix
Matissa Williams		15	Fall	Adopt an Acorn	Collected own acorns, most bad; received City acorns, pots, and racks	Y			N
Total		<u>15</u>							
Grand Total		<u><u>15</u></u>							

City of Rocklin
 Stormwater Management Program
 RUSD Service Learning, Outreach, Education and Participation Project Tracking

Sierra Elementary

2009-2010

Teacher	Grade	No. of Kids	Date	Project Name	Outcome / Description	Contact for Next Year	Attended Council Commendation	AR BMP	AR Appendix
Cinci Saucerman	K/1	22	Mar-Jun	Adopt an Inlet	Staff presentation; ceremony/how to mark inlet	Y			Y
Mrs. Anderson	K/1	22	Mar-Jun	Adopt an Inlet	Staff presentation; ceremony/how to mark inlet				
Ms. Breckenridge	K/1	22	Mar-Jun	Adopt an Inlet	Staff presentation; ceremony/how to mark inlet				
Miss Budge	K/1	22	Mar-Jun	Adopt an Inlet	Staff presentation; ceremony/how to mark inlet				
Ms. Burke	K/1	22	Mar-Jun	Adopt an Inlet	Staff presentation; ceremony/how to mark inlet				
Mrs. Holme	K/1	22	Mar-Jun	Adopt an Inlet	Staff presentation; ceremony/how to mark inlet				
Miss Vestal	K/1	22	Mar-Jun	Adopt an Inlet	Staff presentation; ceremony/how to mark inlet				

Total 154

Grand Total 154

City of Rocklin
 Stormwater Management Program
 RUSD Service Learning, Outreach, Education and Participation Project Tracking

Twin Oaks Elementary

2009-2010

Teacher	Grade	No. of Kids	Date	Project Name	Outcome / Description	Contact for Next Year	Attended Council Commendation	AR BMP	AR Appendix
Jeni Weeks	K/1	20	Dec-Jun	Adopt an Acorn	Acorns sprouted! Returned to City for addition to oak tree nursery	Y	Y		
Total		<u>20</u>							
Grand Total		<u><u>20</u></u>							

This page intentionally left blank.



The Pawprints

Breen Elementary School, Rocklin, CA

Vol. 13 No. 2

Spring, 2010

Students care about our community

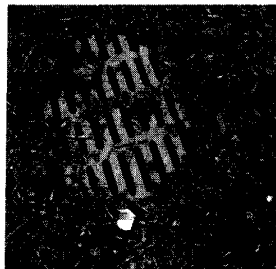
Help get the word out to protect our watershed



What goes down here



This is the wetland along Stanford Ranch Drive by our school. Migrating birds stop by here to rest. Beavers build dams here. Owls and hawks hunt for food here. The water goes untreated directly from the drains in our streets and parking lots to the creeks behind our houses. It eventually flows to the American River and out to the ocean. This is



ends up here

that "Nothing but rain goes down the Drain." Read more about it on page 27.

the water we swim in at a lake and fish from along a river, Students at Breen want to make sure

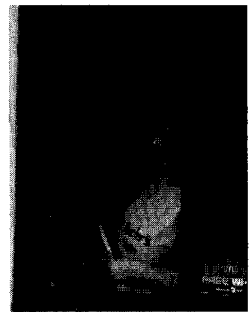
In this issue...



Garden goodies for Eco Station
Page 7

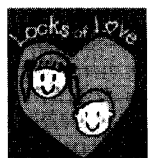
Looking for a good book?
Check reviews on pages 8-9

Teachers moonlight at McDonald's for a good cause



Martin Luther King inspires compassion
Page 13

Read about all the kind things we do for each other!



Nothing but Rain Down the Drain! 27

By Andrea Hildan

Many people do not know why it's wrong to put things down the storm drain. People think, "Oh well, it doesn't matter what I put in the drain; it will just get cleaned." People that think this are wrong because Rocklin has two separate systems. We have the storm drains and household drains.

Water that goes down the storm drains doesn't get cleaned. Household drains such as toilets, sinks, and showers send dirty water to a water treatment plant to get cleaned. Then is filtered back out for us to use again. So be careful what you put down the storm drain.

If you are walking down the street and you see a storm drain with a little blue and green sign with a fish on it, that means do not under any circumstances put any garbage or anything else that's not water in this drain. You shouldn't litter or put anything in it even without the sign.

If you like to drink freshwater I suggest that you don't put anything in the storm drain because the water goes right into our creeks, rivers, and wetlands.

It's not just us that can be hurt from this, it's also our wildlife and plants. For example, toxins in soap, insecticides, and pesticides will go into the river and will be absorbed by a fish. Then a bird will eat the fish. Finally, the bird's eggs will not be strong enough to support the babies, and they will die. Be aware of the storm drains and what goes in them.

You don't have to be as careful what you put in household drains as you are with the storm drains but you should still be careful. The thing you should be careful with is how much water you use. You should conserve water because only 3% of Earth's water is fresh water. So, unless you want your water from your shower to be saltwater I suggest you turn off your taps when they aren't being used.

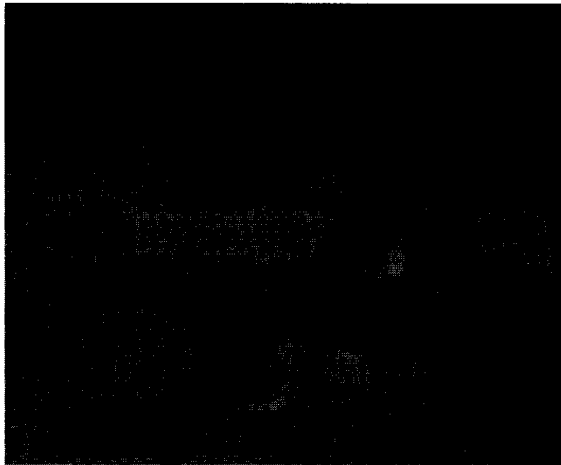
Still, be careful what you put in

your household drains. Here are some ways you can help prevent stuff from going down the storm drain. One way is wash your car on the grass so the soap and water get absorbed by the grass or you can use biodegradable soap. Another way is you can clean your grill on the grass too because the charcoal is actually good for your grass. My final way is put a gravel bag on top of your storm drain so only water can go down it and nothing else. You shouldn't get a sandbag because if that breaks open, water will wash it into the creeks; a gravel bag won't because the gravel is heavier so it won't wash away. If you want to help the environment, use some of these tips.

Now that you are educated about storm drains you can help our environment. Now you also know we have separate systems and only one system gets cleaned. The other can, but it costs a lot of money. Please take care of our storm drains.

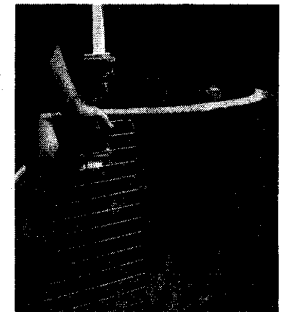


The drain in this parking lot empties into the creek that runs between our school and Save Mart. Oil, zinc, and other toxins can wash into the drain and harm our wildlife. It's important to keep our cars in good shape so they don't leak things like oil, anti-freeze, or other fluids.

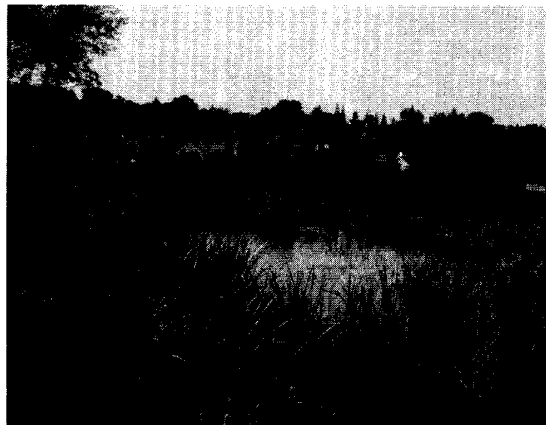


The picture on the front page was taken right across Stanford Ranch Road from our school. Have you ever walked along that side? This Eagle Scout sign shows some of the wildlife that share their rocklin homes with us. Stop by with your parents sometime and take a look!

Watch the Placer Herald for ads created by 5th grade Breen students helping to educate Rocklin citizens about keeping our drains clean!



You can clean your grill off on the grass. Your yard will filter out the charcoal stuck to the grill and it won't go down the drain. Help keep our wetlands clean!



Rethink, Reduce, Reuse, Recycle

"Only Rain Down the Drain"

Rocklin's Breen Elementary's 5th Grade Classrooms
Environmental Awareness Lesson



Learn to create
an ad
Winner in
Mrs. Armstrong's
class



Joshua Ohara

Joshua Ohara
Good Job!

"Only Rain Down the Drain"

Rocklin's Breen Elementary's 5th Grade Classrooms
Environmental Awareness Lesson



Learn to
create an ad
Winner
in
Mrs. Buback's
class

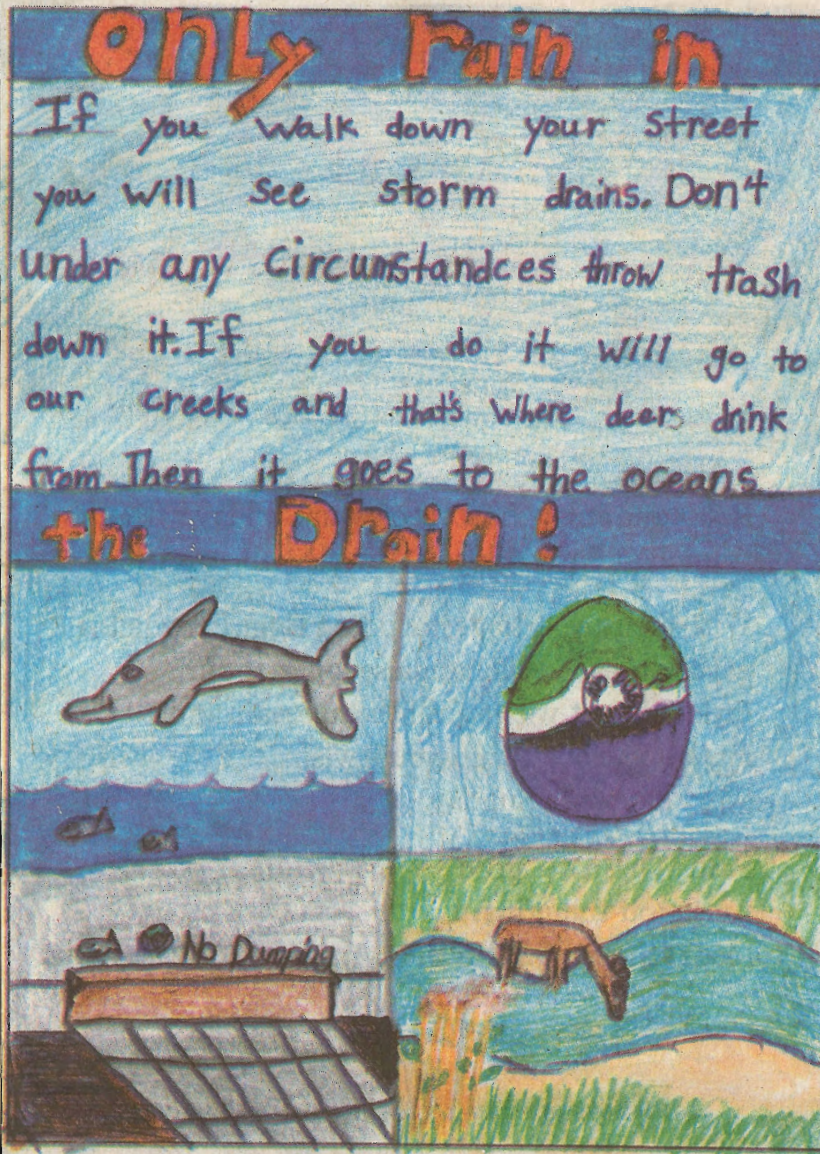


Jessica Girga

**Jessica Girga,
Good Job!**

"Only Rain Down the Drain"

Rocklin's Breen Elementary's 5th Grade Classrooms
Environmental Awareness Lesson



Learn to
create an ad
Winner
in
Mrs. Wampler's
class



Jessica Ginnever

**Good Job
Jessica!**

Breen kids learn to keep water clean

Rocklin fifth-graders are learning the importance of keeping the water clean.

At Breen Elementary School, three fifth-grade classes have come together for an "only water down the drain" campaign.

Within the last couple months, the students have learned the dos and don'ts of water through their service learning project. It coincides with their science lessons where they learn about the water cycle and elements.

Each of the approximately 90 students have designed a colorful ad campaign that shares ways the public can do their part. Using biodegradable soap, not littering or using harsh chemicals are some of the ideas the fifth-graders had.

Three students' campaigns have been chosen as the winners and will be shown in The Placer Herald. The first winner is announced in today's issue. The next two will be announced in the upcoming issues.

The project came about

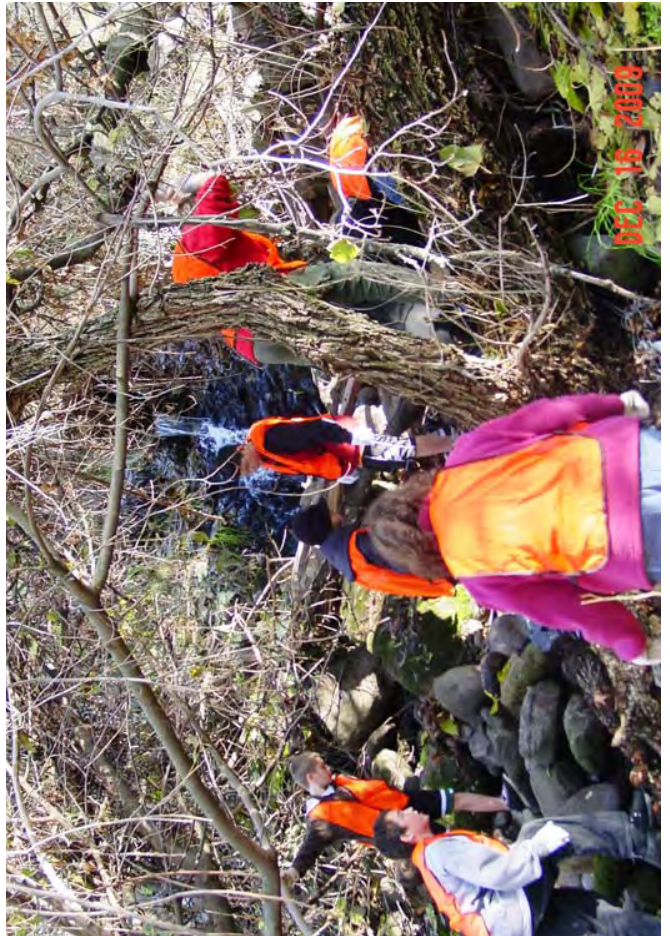
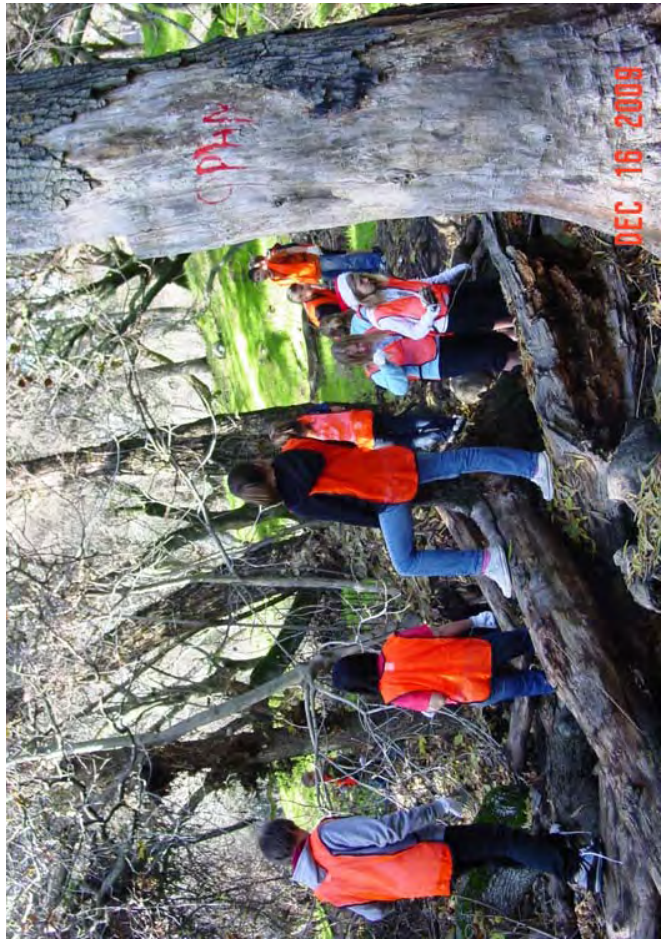
when fifth-grade teacher Linda Wampler said she attended a meeting where the idea came about in regards to public service learning announcements. As the editor of the school's newspaper, she immediately thought of print media.

"To communicate to the community was a good idea," she said.

The students visited the Roseville Utility Exploration Center where they learned about the water cycle and watersheds. Through a visit by Dara Dungworth, associate planner/stormwater coordinator with the city's planning division, students also learned about the city's adopt a drain program. The program lets the public adopt city storm drain inlets and monitor them for debris such as leaves and litter.

If you're interested in adopting an inlet or want more information on the project, contact Dara Dungworth or Lydia Sizelove at 625-5500.

-Lauren Gibbs



This page intentionally left blank.