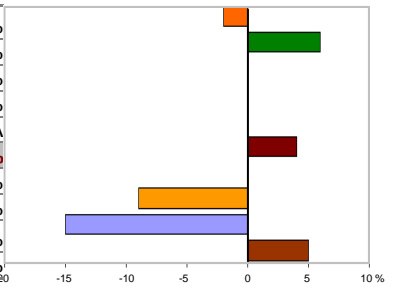


Quality-of-Life Factors

CRIME RATE (per 1,000 Residents)

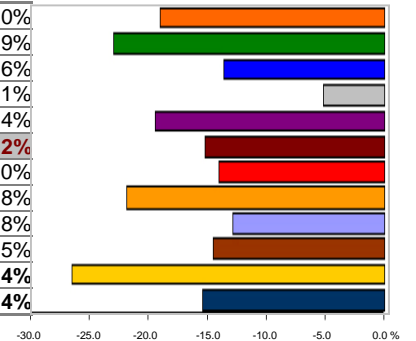
	2005	2006	2007	2008	Change 2007/2008
Citrus Heights (A)			48	47	-2%
Davis	33	32	36	38	6%
Elk Grove (A)			31	31	0%
Folsom	26	25	24	24	0%
Lincoln	N/A	N/A	N/A	N/A	N/A
Rocklin	27	27	23	24	4%
Roseville	49	41	41	41	0%
Sacramento	69	70	64	58	-9%
West Sacramento	42	42	40	34	-15%
Woodland	37	37	37	39	5%



Source: City of Rocklin, California Dept. of Justice—FBI's Uniform Crime Report (crime reporting); California Dept of Finance (population figures)
 Note: (A) the crime data for the cities of Citrus Heights and Elk Grove are rolled up into Sacramento County data, and therefore, not available from 2005-2006

MEDIAN HOME PRICES

	2006	2007	2008	2009	Change 2008/2009
Citrus Heights	\$335,000	\$297,500	\$210,000	\$170,000	-19.0%
Davis	\$490,000	\$533,000	\$525,000	\$405,000	-22.9%
Elk Grove	\$462,000	\$382,500	\$269,000	\$232,500	-13.6%
Folsom	\$494,500	\$436,500	\$379,500	\$360,000	-5.1%
Lincoln	\$435,000	\$405,000	\$310,000	\$250,000	-19.4%
Rocklin	\$477,500	\$447,000	\$330,000	\$280,000	-15.2%
Roseville	\$430,000	\$430,250	\$332,500	\$286,000	-14.0%
Sacramento	\$339,500	\$300,000	\$179,000	\$140,000	-21.8%
West Sacramento	\$355,000	\$376,000	\$263,250	\$229,500	-12.8%
Woodland	\$436,000	\$363,000	\$275,000	\$235,250	-14.5%
California	\$575,850	\$591,280	\$373,100	\$274,740	-26.4%
United States (A)	\$221,900	\$228,900	\$215,000	\$181,800 (p)	-15.4%



Source: California Association of Realtors, National Association of Realtors
 Data Available: www.realtor.org
 Notes: "Trends" data is June of each year
 (A) United States data from National Association of Realtors
 (p) preliminary data

Quality-of-Life Factors

EDUCATION—ACADEMIC PERFORMANCE INDEX (API) SCORES

	2005/06	2006/07	2007/08	2008/09	Change 2007/08 to 2008/09	
Citrus Heights (San Juan USD)	760	765	777	786	1.2%	
Davis	863	869	872	873	0.1%	
Elk Grove	758	764	775	786	1.4%	
Folsom	798	805	812	817	0.6%	
Lincoln (Western Placer USD)	756	765	787	810	2.9%	
Rocklin	842	843	856	869	1.5%	
Roseville	748	764	786	802	2.0%	
Sacramento	706	715	734	746	1.6%	
West Sacramento (Washington USD)	699	702	713	722	1.3%	
Woodland	703	710	714	731	2.4%	
California	800	800	800	800	0.0%	

Source: California State Dept. of Education
 Data Available: www.dq.cde.ca.gov/dataquest/ (Growth API Report—District API)

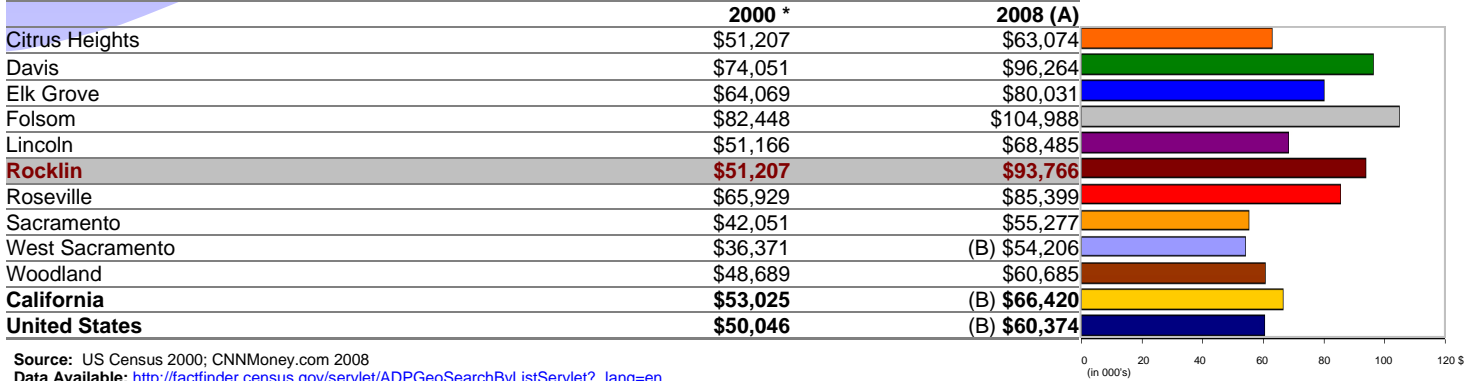
EDUCATION—PERCENTAGE OF GRADS UC/CSU

	2004/05	2005/06	2006/07	2007/08	Change 2006/07 to 2007/08	
Citrus Heights (San Juan USD)	30.2%	33.2%	35.0%	33.9%	-3.1%	
Davis	67.8%	73.5%	66.1%	65.2%	-1.4%	
Elk Grove	39.2%	37.1%	39.1%	40.5%	3.6%	
Folsom	32.5%	31.7%	35.0%	35.9%	2.6%	
Lincoln (Western Placer USD)	13.8%	5.7%	9.7%	8.8%	-9.3%	
Rocklin	48.0%	41.8%	41.8%	35.2%	-15.8%	
Roseville	37.2%	45.2%	43.4%	42.1%	-3.0%	
Sacramento	35.4%	51.9%	38.3%	38.8%	1.3%	
West Sacramento (Washington USD)	13.1%	23.8%	20.1%	25.8%	28.4%	
Woodland	23.7%	41.4%	26.3%	40.2%	52.9%	
California	35.2%	36.1%	35.0%	32.8%	-6.3%	

Source: California State Dept. of Education
 Data Available: www.dq.cde.ca.gov/dataquest/
 Notes: Percentage of high school graduates meeting UC/CSU entry requirements

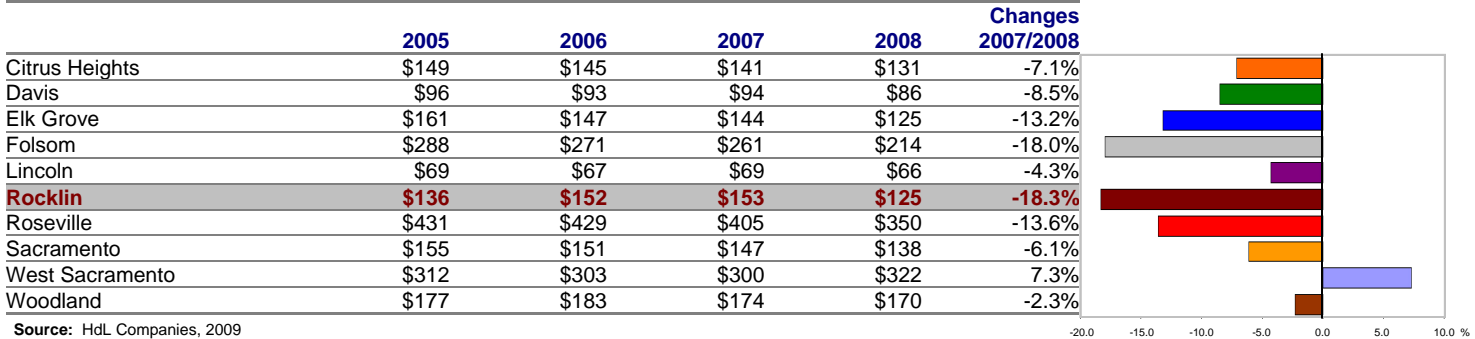
Quality-of-Life Factors

MEDIAN FAMILY INCOME



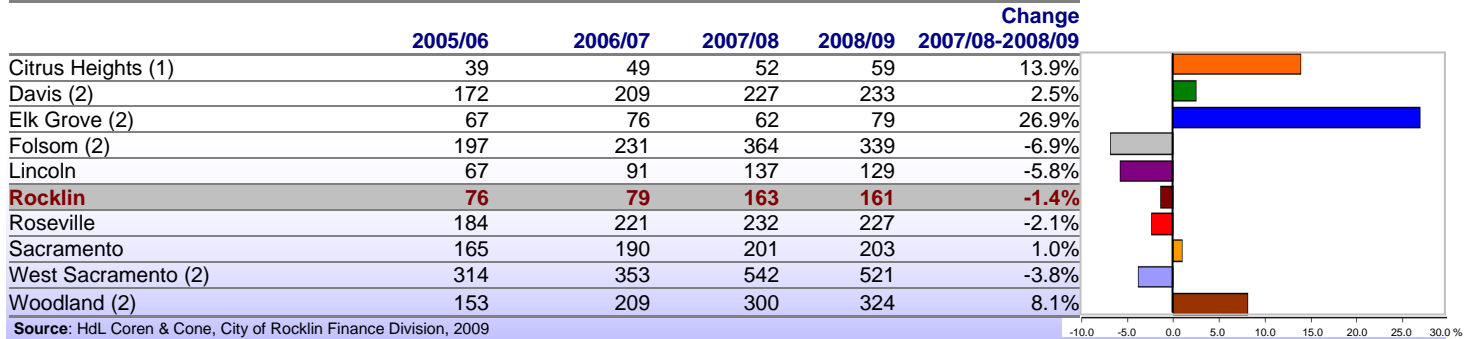
Source: US Census 2000; CNNMoney.com 2008
 Data Available: http://factfinder.census.gov/servlet/ADPGeoSearchByListServlet?_lang=en
 Note: * US Census 2000 Demographic Profile Highlights
 (A) CNNMoney.com
 (B) US Census American Community Survey 2005-2007

PER CAPITA SALES TAX



Source: HdL Companies, 2009

PER CAPITA PROPERTY TAX



Source: HdL Coren & Cone, City of Rocklin Finance Division, 2009
 Notes: (1) No GF revenue for 30 years per agreement with County of Sacramento
 (2) Revenue data from City budget or CAFR documents